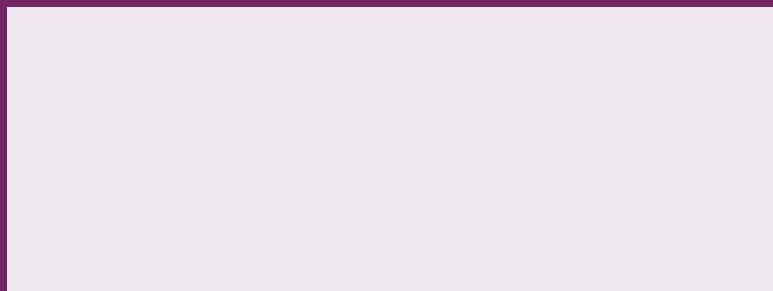


Ground Support

WORLDWIDE

Supporting Aviation from the Ground Up



PREMIUM QUALITY CABLES AND MORE



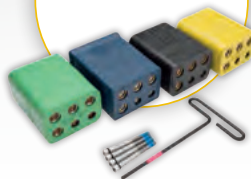
SCUFF JACKET



FULL CABLES



REPLACEABLE
CABLE HEADS
AND NOSES



J&B Aviation offers a comprehensive range of 400 Hz single jacketed and banded cables, pre-conditioned air hoses, hose reels, yokes and connectors. We have solutions for all types of aircraft – all designed to minimize the risk of disruptions and delays through superior reliability, flexibility and convenience.

If you don't think your choice of cables, ducts, reels and pre-conditioned air connectors can make a difference to your bottom line, you're probably not using products from J&B Aviation.

ISN'T IT TIME YOU TOOK A CLOSER LOOK AT J&B?

If your business has a need or special challenge you'd like to talk to us about, please don't hesitate to call or email. We're easy to reach—and to do business with.

In the US, call toll free at 1-800-621-0074. From outside the US, call +1-941-721-1018. You can email us any time at jandbsales@itwgse.us



J&B AVIATION

www.itwgse.com/jb

It's all about connections

Ground Support

WORLDWIDE

Editor

Alex Wendland
920.563.1644 ▶ alex.wendland@AviationPros.com

Associate Publisher/Sales

Missy Zingsheim
920.563.1665 ▶ missy@AviationPros.com

Classified Advertising

Michelle Scherer
920.568.8314 ▶ mscherer@AviationPros.com

International Sales Manager

Stephanie Painter
+44 1634 829386 ▶ fax +44 1634 281504
Stephanie@painter-lowe.com

List Rental

Elizabeth Jackson
847.492.1350 ext. 18 ▶ ejackson@meritdirect.com

PRODUCTION & CIRCULATION

Art Director

Rhonda Cousin

Production Manager

Carmen Seeber
920.568.8373 ▶ carmen.seeber@AviationPros.com

Circulation Manager

Debbie Dumke
920.568.1763 ▶ ddumke@southcomm.com

Production Director

Steve Swick

INTERNATIONAL AIRPORT GSE EXPO

Trade Show Director

Sue Ralston
920.563.1655 ▶ sue@AviationPros.com



AVIATIONPROS GROUP

- Gloria Cosby** ▶ Executive Vice President
- Gerry Whitty** ▶ VP, Marketing
- Brett Ryden** ▶ Publisher, Aviation Group
- Lester Craft** ▶ Director of Digital Business Development

SOUTHCOMM BUSINESS MEDIA

- Chris Ferrell** ▶ CEO
- Ed Tearman** ▶ CFO
- Blair Johnson** ▶ COO
- Eric Kammerzell** ▶ VP, Technology
- Curt Pordes** ▶ VP, Production Operations

Published and copyrighted 2015 by SouthComm Business Media, LLC, 1233 Janesville Ave., Fort Atkinson, WI 53538 USA. All rights reserved. No part of this publication may be reproduced or transmitted in any form or by any means, electronic or mechanical, including photocopy, recording or any information storage or retrieval system, without written permission from the publisher.

Reprint Services
To purchase article reprints, please contact Wright's Media at 877.652.5295 or email info@wrightsmedia.com.

Subscription Policy: Subscriptions are free to qualified businesses. Others may purchase subscriptions at these rates: US, 1-year \$45, 2-years \$85; Canada & Mexico, 1-year \$65, 2-years \$120; All other countries, via airmail, 1-year \$95, w-years \$180. Single copies \$10.

Ground Support Worldwide (USP 015-386, ISSN 1934-2861 print, ISSN 2150-4016 online) is published ten times annually in February, March, April, May, June/July, August, September, October, November and December/January. Periodicals postage paid at Fort Atkinson, WI and additional mailing offices.

Change of address or subscription information: Toll Free - 877-382-9187, Local - 847-559-7598, circ. groundsupportww@omeda.com

POSTMASTER: Please send address changes to Ground Support Worldwide, SouthComm Business Media, LLC, PO Box 3257, Northbrook, IL 60065-3257. Printed in the U.S.A.

Canada Post: PM40612608. Return undeliverable Canadian addresses to: Ground Support Worldwide, PO Box 25642, London, ON N6C 6B2. Canadian GST #842773848.

6	Cargo, Baggage Handling Equipment & Accessories
14	Catering Equipment
16	Deicing, Anti-Icing
22	Fuels, Filters, Equipment & Services
26	GPUs, Air Starts, PCAs, Parts & Accessories
30	Green Products & Alternative Technology
32	Ground Handlers, Service Providers
34	LAV, Potable Water Carts & Accessories
36	Maintenance & Shop Equipment
40	Passenger Stairs, Lifts, Boarding Bridges
42	Pushbacks, Tractors, Utility Vehicles
44	Safety & Communications

▶ **COLUMNS**

- 04 Associate Publisher's Note**
Finding a Rejuvenated, Vibrant GSE Industry at inter airport Europe
- 50 Editor's Note**
The GSE Industry is Ready to Take Off

SOCIAL MEDIA & ONLINE CONTENT



FACEBOOK
facebook.com/
AviationPros



TWITTER
@aviation_pros



LINKEDIN
linkedin.com/groups/
AviationProscom



YOUTUBE
youtube.com/user/
AviationProsVideos



▲ Associate Publisher - Missy Zingsheim
missy@aviationpros.com
920-563-1665

► Advertiser's Index

Advertiser	Page #
A T Juniper.....	46
AERO Specialties	35
Air Ocean Pros.....	47
Alberth Aviation	47
Beta Fueling	11
BKW	43
Columbus Jack	27
David Clark Company	15, 25
Engine Distributors.....	52
FAST	7
Fortbrand Services Inc.....	47
Global Aviation Services.....	46
Global Ground Support.....	24
Hobart.....	13
Hydraulics Intl	41
International Airport GSE Expo	18-19
J&B Aviation	2
Lektro.....	43
Malabar	16
Mercury GSE	47
Page Industries	51
Par-Kan	45
Phoenix Metal Products	39
Premier Engineering & Manufacturing	21
Sage Parts	14
Servicore	45
Skymark Refuelers	29
Somerset Aviation Capital	47
Tronair	31
U.S. Airmotive GSE	37
Unitron.....	5
Verde GSE	9
Vogel Equipment	17
Xcēd Aviation Services	23

Finding a Rejuvenated, Vibrant GSE Industry at inter airport Europe

It doesn't seem like it, but it has been over a month since inter airport Europe.

The last time I attended inter airport was 2011 and there was certainly a different vibe this year. The weather was fantastic for October in Munich, but it was really the overwhelmingly positive conversations I had with everyone I talked to that changed the vibe.

I know that we constantly have our ups and downs in aviation, and in ground support, but it was great to see the new products and the innovation exhibited this year.

Part of the conversation I was able to have included the positive changes that are happening with *Ground Support Worldwide* magazine and our newly combined show with IAEMA, International Airport GSE Expo. *Ground Support Worldwide* has increased our global circulation to that of 2x any other publication in the ground support industry this year, as well as our great new look. Add to that the combination of the two North American

GSE shows and we are beyond excited moving into next year. 2016 will mark the 24th year for the publication and the 19th year for the GSE show.

I would also like to give a BIG thank you to the ITW GSE Group and David Janis, director of sales for ITW GSE Americas, for their hospitality while at inter airport. I truly enjoyed



getting to know the group and your different distributors around the world. Also, thanks for letting me see the wood at your event – it was a great time. And the polka band was fantastic!

Missy Zingsheim



SOCIAL MEDIA & ONLINE CONTENT



FACEBOOK
facebook.com/
AviationPros



TWITTER
@aviation_pros



LINKEDIN
linkedin.com/groups/
AviationProscom



YOUTUBE
youtube.com/user/
AviationProsVideos

INTRODUCING!



ULTRA LITE™ SERIES



F R O M U N I T R O N

Now, a state-of-the-art 28VDC GPU in an ultralite configuration. At Unitron, we have literally brought 28VDC Ground Power Units into the twenty first century with units that change 50/60Hz utility power electronically into 28VDC power to energize an aircraft while its generators are not in use.

FEATURING:

- Input P.F. Correction
- Input Voltage Auto Ranging System
- Multi Language (Romanization) Display
- Certified through CE Mark, UL and CSA listings
- Self-diagnostic capabilities for minimizing downtime
- ALDC Technology for plug head voltage regulation up to 75 feet

Contact us to find out more about the latest in mobile Ground Power Units.



Unitron
POWER SYSTEMS
Dallas, Texas

For additional information contact Lee Kaddatz, Ext. 111
+1-214-340-8600 • 1-800-527-1279 • Fax +1-214-341-2099
www.unitronlp.com

FAST EUROPEAN DOLLY

FAST Global Solutions

FAST Global Solutions, formerly known as WASP Inc., introduces a new side-tow European Dolly. The innovative transporter features a patent-pending pivoting front towbar designed to increase safety and maneuverability. FAST engineers incorporated a foot-activated, quick-release mechanism that unlocks the towbar, allowing it to pivot right or left to connect to a tug or another dolly.

AviationPros.com/12123699



**BEUMER GROUP
BAGGAGE LOADER**
BEUMER Group

The Baggage Loader from BEUMER Group was developed to reduce manual lifting of in-gauge bags in the make-up area in the airport. It significantly increases workplace safety for baggage handling staff and provides physically efficient loading and unloading of bags into unit load devices (ULDs) or other departure handling systems and vehicles.

AviationPros.com/12125651

BAGGAGE CHUTE

Page Industries

PAGE, the innovator of the baggage chute in 1997, proudly introduces the P6000 which utilizes modern manufacturing techniques and materials. The P6000 is the best and most advanced method for transferring passenger luggage to the tarmac while being the easiest to install and maintain. PAGE - Your CONDUIT to Performance.

AviationPros.com/12020664



CBL2000E
Charlotte of America

AC powered 80V full-size electric belt loader with 25 foot conveyor. Direct Drive belt system with flush-mounted weather-proof controls. Majority of components compatible with T137 tractor.

AviationPros.com/10027110



**POWDER-COATED
CASTERS**

RWM Casters

Something's different about RWM Casters. Powder coat, which replaces a conventional paint process, offers not only a tremendous visual appeal but also serves to better protect from the elements over the competition. This means longer lasting casters = less maintenance = less long term investment = less time worrying about casters when you could be doing what you do best.

AviationPros.com/12055123



BAGGAGE CART CURTAINS
ABC Industries Inc.

ABC Industries, Inc. has expanded its GSE product offering with a new line of baggage cart curtains. Available for baggage, freight, mail and catering, the cart curtains are custom designed to each cart OEM's specification. A series of carabiner hooks are used to quickly attach and detach the curtain, eliminating time consuming and costly maintenance. The curtains are constructed of high-strength, 20-ounce ABC VentaTex® PVC fabric.

AviationPros.com/10732974





THE NEW WASP, INC.

WASP *IS NOW* FAST



We're getting bigger and faster to serve you even better. **WASP** Inc. — manufacturer of the high-quality GSE you've used for decades — is now **FAST** Global Solutions. We grew our team and workspace by 60% this year, and we added \$12 million in advanced production equipment throughout 500,000 square feet of workspace. We're ready to partner with you at high speed.

*FIND OUT HOW THE WORLD'S LARGEST NON-POWERED GSE MANUFACTURER IS EVEN BIGGER... AND **FASTER!***

WWW.FASTGSE.COM // INFO@FASTGSE.COM // 320-334-2868

STACK@EASE

**Vanderlande
Industries, Inc.**

STACK@EASE will double the performance of handlers making up flights (any type cart and/or containers) without impacting the way of working. By making any baggage item weightless for the handlers it takes away any restriction for lifting. By introducing NO restrictions within the freedom of movement, the current natural, intuitive and parabolic ways of working remains intact.

AviationPros.com/11245390



NEW STANDARD DOLLY

FAST Global Solutions

Due to the many types and combinations of containers and pallets it can handle, FAST Global Solution's one New Standard Dolly can replace multiple dollies with various capacities. The New Standard Dolly has a 15,000-pound (6,804-kilogram) capacity and the versatility to carry LD-2, LD-3, LD-4 and LD-11 containers, as well as two LD-2 or LD-3 containers at a time. It also takes half pallets, 88-by-125-inch (224-by-318-centimeter) pallets and 96-by-125-inch (244-by-318-centimeter) pallets. LD stops and vertical restraints throughout the unit firmly lock containers in place.

AviationPros.com/12017895



HUDSON HAULER

Hudson Bearings

Simplify moving everything from heavy equipment to shelving units with the Hudson Hauler and the Hudson Super Mover. Their low profile design minimizes required lift while allowing for easy omni-directional movement.

AviationPros.com/12059612

**HIGH SPEED CARGO
TRACTOR**

Eagle Tugs

Eagle Tugs was the originator of the Bob Tail high-speed cargo tractor more than 40 years ago and is still the leader today. Eagle Bob Tails can tow cargo up to 90,000 pounds. (40,823 kilograms).

AviationPros.com/11191672



CARGO RESTRAINT PRODUCTS

Cargo Systems Inc.

Cargo Systems provides a full line of cargo restraint products. If you need something simple like a mil-spec strap, tie-downs, fittings, or attachment hardware, we keep hundreds of parts in stock. If you require a custom-designed cargo restraint system for your aircraft, or ground vehicle, the company can assist with that as well. It has engineering capabilities, and a production team that can design and produce something to meet your needs within days.

AviationPros.com/11117483



**BEUMER GROUP
BAGGAGE UNLOADER**

BEUMER Group

The Baggage Unloader from BEUMER Group transfers bags from a container onto a conveying line in the airport, allowing operators to slide bags onto the conveyor rather than lift them. This technique reduces the risks of operator injury and damage to baggage and enables faster, more efficient unloading of unit load devices (ULDs).

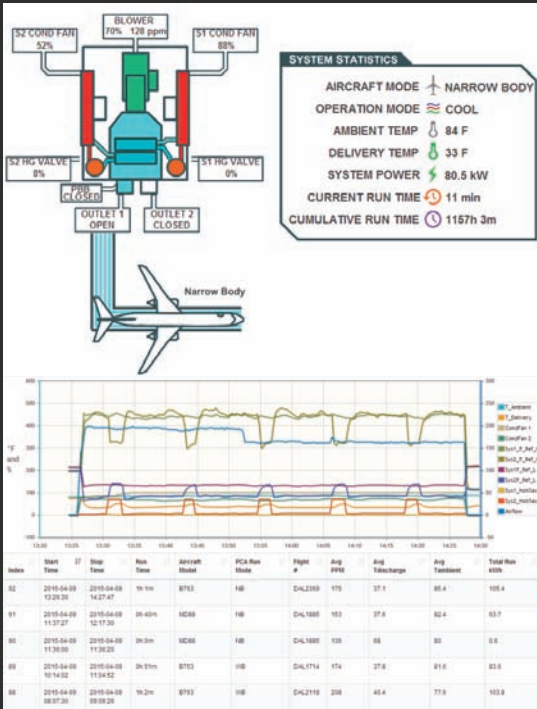
AviationPros.com/12125683



PRE CONDITIONED AIR

30, 45, 60, 90, & 120 TON PCA

SIMPLE MACHINE



VERDE-ICE online monitoring



Verde 60 Ton bridge mount PCA system at Orlando International Airport

DYNAMIC PERFORMANCE

FEATURES

REMOTELY MONITOR, TROUBLESHOOT, & COLLECT PERFORMANCE DATA FROM EACH GATE LOCATION

LOWEST REFRIGERANT CHARGE PER TON

SEAMLESS DEFROST

HIGH ENERGY EFFICIENCY WITH BLOWER & FAN SPEED CONTROL

MICROCHANNEL HEAT EXCHANGERS

INDUSTRY'S FIRST HEAT PUMP

ENHANCED EVAPORATORS



Verde 45 Ton Heat Pump PCA system at Louis Armstrong New Orleans International Airport

FOR A QUOTE
CALL - (888) 837-5221
EMAIL - sales@verdegse.com
WEBSITE - www.verdegse.com

LEASING PLANS AVAILABLE

WWW.VERDEGSE.COM





**CONTAINER/PALLET
LOADER**

TLD

TLD offers three main container and pallet loaders: Model 838 with 16,500-pound capacity; Model 929 with 33,000-pound and 44,000-pound capacity and the Model 121 with 66,000-pound capacity. Operators and maintenance personnel can appreciate the speed, ease-of-operation and industry-leading diagnostics on all TLD loaders.

AviationPros.com/10025391

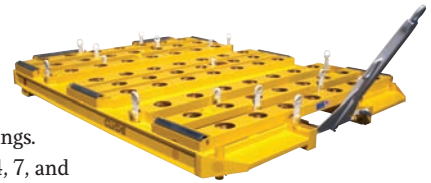
COVERED PALLET TRAILER

Clyde Machines Inc.

The 15F2862 15,000-pound capacity trailer has a new recessed frame to protect customer markings.

This Covered Pallet Trailer will hold LD1, 2, 3, 4, 7, and 8 containers, or 88-inch x 125-inch, 96-inch x 125-inch, and 88-inch x 108-inch pallets. With its actuated towbar, self-adjusting rear brakes and 4 x 8, three-stage solid tires, this durable trailer is a Clyde featured product with a quality powder coat finish.

AviationPros.com/10779066



CONVEYOR BELTING

HBD/Thermoid Inc.

Thermoid® PACK-EZ S/Weave conveyor belting is approved and preferred by all major, package handling companies. Especially suited for slider bed systems, these belts are built to resist abrasion, stretching and fire.

AviationPros.com/11191802



**FIRE-RESISTANT CARGO
CONTAINERS**

AAR Corp.

AAR announced a new Nordisk ULD design, which during testing was proven to contain a fire for up to six hours. Partnering with DuPont, AAR was able to replace traditional construction with innovative materials for a unit that is lighter than any similar product on the market.

AviationPros.com/11135441



**HUDSON AIR CARGO
BEARINGS**

Hudson Bearings

We offer several varieties of lightweight aluminum body ball transfer for material handling on-board aircraft as well as an extensive line of stainless steel ball transfers for wet/outdoor environments. We also offer zinc-nickel plating for excellent corrosion resistance.

AviationPros.com/12091371



CHAMP 300 PALLET/CONTAINER LOADER

Trepel Airport Equipment GmbH

Trepel Airport Equipment GmbH has designed the CHAMP 300 pallet/container loader that is a self-propelled unit designed to handle containers and pallets up to 20 feet in length and a maximum of 30 tons. The 300 is capable of operating with a bridge platform height between 2 meters and 5.6 meters and can service main and lower deck compartments of a Boeing 747, DC-10, L-1011, and A300 aircraft.

AviationPros.com/10024574



**POWER STOW
ROLLERTRACK SYSTEM**

Power Stow A/S

Power Stow Rollertrack is a unique belt loader extension providing smarter working conditions. The solution is ground based, reduces body injuries by 50% and provides 30% faster turnaround times with fewer resources. Combined with low maintenance costs the Power Stow solution gives an attractive return on investment.

AviationPros.com/10300843





Narrow Body Cart

BETA Fueling Systems offers the aviation industry the only green narrow body cart designed to operate in any weather and equipped with an advanced, interactive monitoring system. The cart is fully JIG and A4A compliant.

Benefits of the BETA Narrow Body cart include:

GREEN POWER FOR ANY WEATHER

- Hose rewind accomplished by fuel pressure
- Uses fuel or solar power for all electrical operations
- Zero emissions towable cart

TIME-SAVING OPERATION

- Flow rate up to 480 GPM/ 1800 LPM
- Dedicated equipment allows for quicker gate turns
- Towable between gates

LONGER LIFE & LESS MAINTENANCE

- Eliminates maintenance associated with a chassis
- Manufactured utilizing corrosion resistant aluminum and stainless steel

PRECISE METERING & SAFETY

- PRECI-control monitoring system with interactive interface, detailed help texts, and integrated diagnosis and service
- The PRECI-control monitoring system meets the most stringent safety requirements around the world



Contact us to discover the BETA difference.
Green power for any weather.



RELIABILITY | SUPPORT | DELIVERY™

+1 336 342 0306 | sales@betafueling.com | betafueling.com

CONTAINER TRAILER

Accessair Systems Inc.

Accessair's TTAS Automatic-Stop Turntable Container Trailer with its proven 360-degree rotating turntable has proven to be the most in-demand model produced by its MOODY Products Division. In addition Accessair produces a variety of container trailers, pallet dollies, racks, slave pallets and baggage and cargo carts for the global market.



AviationPros.com/10026206

BAGGAGE BUMPERS

American Permalight Inc.

PERMALIGHT foamy cushioned safety bumper guards are made of durable, recyclable polyurethane foam and easy to install on conveyor belts, racks, shelves, columns, protrusions and sharp corners. They help prevent employee injury from bumping into obstacles and avoid costly equipment damages. The alerting bright yellow-black foam bumpers are 39-inch standard length with a few shapes also available in 16 foot rolls.



AviationPros.com/12044048



DURABLE TEXTILE SOLUTIONS

Estex Manufacturing Co. Inc.

Estex Manufacturing providing quality and durable textile solutions to GSE for over 25 years. PCA Hoses, Loading Bridge Canopies, Cart Curtains, ULD Doors and our NEW Cabin Service Truck Doors which replace costly and labor intensive roll-up doors on current truck fleet.

AviationPros.com/12013143

BAG LIFT

Austral Star LLC

The BAG LIFT provides the solution passenger gate congestion caused by over sized carry on bags. It can be mounted to a PBB rotunda, walkway or into the terminal. The integral Bag Cart is Loaded by passengers at terminal level and then unloaded by workers on the ramp. Our latest models are reliable, robust and they look great!

AviationPros.com/11486725

BAGGAGE CARTS

Par-Kan Company

Par-Kan Company offers both open and covered baggage carts.

- 4,000-pound Capacity
- 5,000-pound Capacity
- 8,000-pound Capacity
- 5th Wheel Steering
- Towbar Activated Braking System
- Pneumatic or Solid Tire Options Available
- Fixed or Torsion Axles Options Available
- Curtains and Tarp Systems Available
- Knock Down Cart Options Available for Sea Container Shipments
- Powdercoat Finish

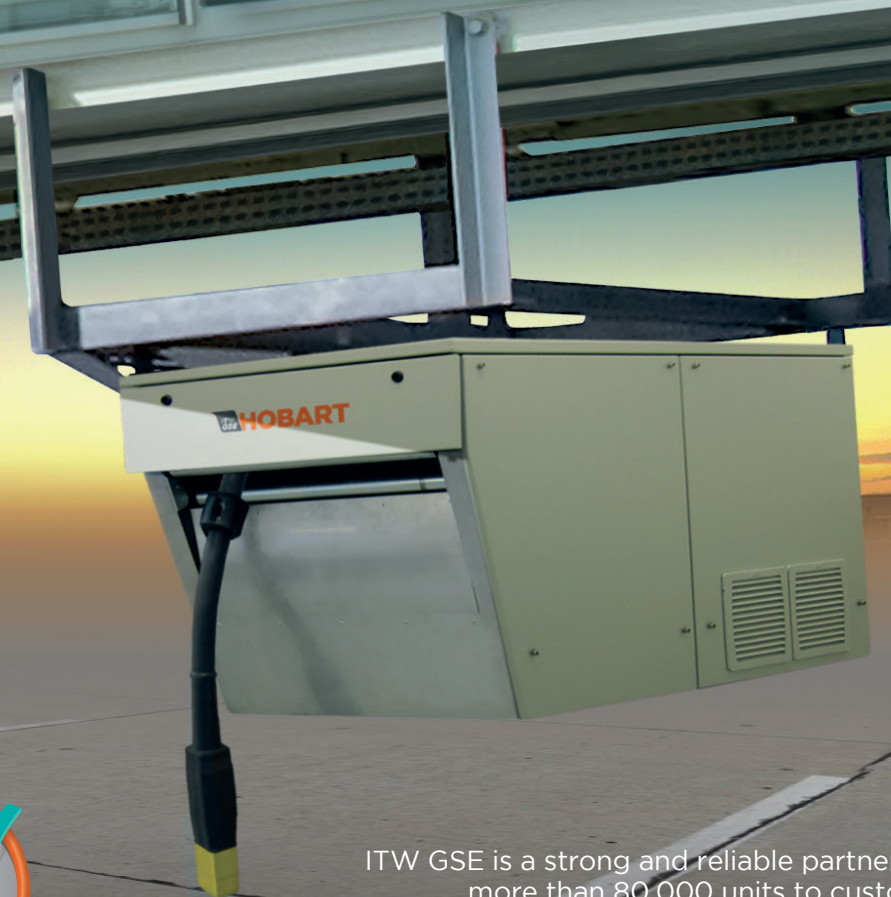


AviationPros.com/12129679

THE AESTHETIC POWER SOLUTION

HOBART 2400 POWER COIL

90 kVA Solid-state GPU and Cable Coil - in one enclosure



PLUG & PLAY
UNIQUE VOLTAGE QUALITY

ITW GSE is a strong and reliable partner with deliveries of more than 80,000 units to customers world-wide. We monitor the market trends and provide world-class know-how.

**ITW
GSE HOBART**

www.itwgse.com/hobartpowercoil

It's all about connections



**PNX-PV120
PROVISIONING VAN**

Phoenix Metal Products

Phoenix PV120 Provisioning Van is a self-contained vehicle that can service aircraft with a door height from 98 inches to 108 inches. The van body is fixed with an elevating platform. A parallelogram stair makes a safe transition between the van body and platform. Please visit our website for complete specification.

AviationPros.com/10026497

**CATERING/CABIN
SERVICE TRUCKS**
Global Ground Support

Catering/Cabin Service Trucks are available in various sizes: 18-foot wide body, 22-foot wide body, 16-foot narrow body and 14-foot narrow body. RJ 1/2 cab service also available.

AviationPros.com/10026400



CATERING TRUCK
Stinar Corporation

Stinar Corporation offers its HLCA-722 Catering Truck that services aircraft from 98 to 228 inches and features:

- 22-ft. van body.
- Four vertical stabilizers.
- Front and rear roll-up doors.
- Aluminum diamond plate floor.
- Many options available including refrigeration.

AviationPros.com/10024780



PUMPS, SPRAY GUNS, AND NOZZLES

MYERS® HOT FLUID PUMP



JOHN BEAN®
SPRAY GUN 785



DAVID CLARK® U3801
REMOTE STATION CONTROL



TASK FORCE TIPS®
ICE-CONTROL NOZZLE
WITH PISTOL GRIP



COMMUNICATION ACCESSORIES

HARDI®
DEICER PUMP 463



DAVID CLARK®
HEADSETS



AIRCRAFT DEICER PARTS



www.sageparts.com

+1.877.SAGE.877 USA & Canada | +1.631.501.1300 International

FULL LINE OF DEICER PARTS FOR EVERY BRAND

AviationPros.com/10017739



**DOLL CATERING HIGH
LOADERS X-CAT ECOCAT**
DOLL Fahrzeugbau AG

The catering trucks of the X-Cat S EcoCat series are all-rounders of the small kind and complete the DOLL product range at the bottom. The trucks with a payload of 1.5 t are suitable for small regional catering airplanes with a sill height of up to 4,200 mm.d

AviationPros.com/10027278

► **'ECAT' CATERING TRUCK**

DOLL Fahrzeugbau AG

The ecats are powered by emission-free electric engines whose energy is supplied by high-performance batteries, which can be charged anytime at the ramp. In this way, CO₂ emissions are reduced to zero and the energy consumption as well as noise pollution decrease considerably. Furthermore, a more efficient energy carrier and low motor maintenance requirements contribute to lowering operating costs and to increasing the vehicle's efficiency. The driving innovation is completed by a novel intelligent driving assistance which is characterized by warning and safety systems minimizing downtime as well as maintenance costs. The ecats were realized in close cooperation with the DOLL partners Gate Gourmet, a subsidiary of Gate Gourmet, and German E-Cars.

AviationPros.com/11245336



► **FLIGHT CATERING HI LIFT**

Nandan GSE Pvt. Ltd.

Nandan manufactures Hi Lifts for Catering companies who want economical and world class solutions. Standard is 4 ton with FRP panel bodies and four way platform. We can customise every feature and choose the model depending on your exacting need. Chassis, refrigeration unit and transmission of choice.

AviationPros.com/10027554



(((WIRELESS)))

**CLEAR COMMUNICATION
FOR PUSHBACK AND RAMP OPERATIONS
WITH DAVID CLARK WIRELESS SYSTEMS**

David Clark Company **Series 9900 Wireless Headset Communication Systems** enhance efficiency and turnaround time for critical pushback operations and a variety of other ground support applications. Rugged components, including noise-attenuating headsets, wireless gateways and controllers, allow tug operators to communicate clearly with the cockpit as well as wingwalkers and other ground support personnel - without being tethered to the aircraft or equipment.

For more information
call **800-298-6235** or
visit **www.davidclark.com**



© 2015 David Clark Company Incorporated
® Green headset domes are a David Clark registered trademark.

WWW.DAVIDCLARK.COM

AviationPros.com/10017163



PORTABLE VISCOMETER
Hydramotion Ltd.

It is easy to measure the viscosity of deicing fluid with the Viscolite portable viscometer from Hydramotion Ltd. – simply dip the probe into fluid and see the viscosity reading instantly. Wipe the sensor clean and it is ready for re-use. The viscometer is factory-calibrated and does not need recalibration. For more information visit www.hydramation.com.

AviationPros.com/11654481



TKS FLUID CART
Alberth Aviation

Alberth Aviation designed this cart for clean transfer of TKS deice fluid from holding tanks and drums to the aircraft. Includes all hoses, 12-volt battery and charger, 4.5 gpm pump, 30-gallon tank, ready to use!

AviationPros.com/12012896



**VEHICLE INTERCOM
DEICING SYSTEM**

**David Clark
Company Inc.**

David Clark Company's Series 3800 Vehicle Intercom Deicing System offers the simplicity you need coupled with the versatility you desire. It's simple, yet rugged, modular design offers durability that is unbeatable.

AviationPros.com/10024909

Airbus-Approved A350 SCS Equipment



1. A350 SCS Fill/Drain Cart, Malabar Model 1016, performs aircraft coolant drain, fill, clean, and de-aerate operations.
2. Hand Pump, Top Up, Malabar Model PF56201, is used to top off the A350 SCS Accumulator and top off and drain the A350 Consumer Units.
3. Adapter Set, Ground Service Panel, Malabar P/N 1016309, connects the 1016 SCS Cart and PF56201 Hand Pump to the A350 Ground Service Panel.
4. Adapter Set, Consumer Units, Malabar P/N 1016310, connects the 1016 SCS Cart and PF56201 Hand Pump to the A350 Consumer Units.

220 W. Los Angeles Avenue • Simi Valley, CA 93065 USA • 1-805-581-1200 • www.malabar.com

Malabar's Quality Management System is certified to ISO 9001:2008.



AviationPros.com/10017568



EXPRESS HEAT DEICER
Premier Engineering and Manufacturing

Premier Engineering and Manufacturing's Model MT43P21 "Express Heat" Deicer contains 2,100 gallons of fluid storage capacity with 180-degree F fluid within 90 seconds utilizing the "Express Heat" 4.2 million BTU heating system. A double knuckle, telescoping and articulating aerial lift is forward-mounted for greater versatility and visibility of the operator.

AviationPros.com/10025553

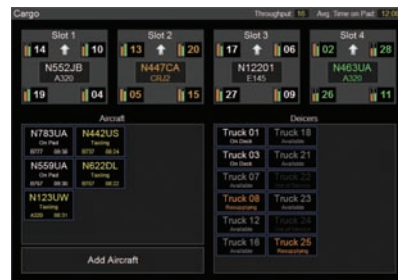
ICE CONTROL NOZZLES

Task Force Tips Inc.

Task Force Tips Ice Control Nozzles have been specifically designed to apply water-, glycol-, or water/glycol-based deicing and anti-icing fluids to aircraft exterior surfaces at fluid temperatures up to 210 degrees F (99 degrees C). The proper use of deicing and anti-icing agents aids ground-support professionals in the removal of frozen precipitation from aircraft fuselage, landing gear, and wing surfaces and helps prevent ice and snow from adhering to the wings of aircraft.



AviationPros.com/10441669



MERCURY DEICING MANAGEMENT SYSTEM
Aviata Systems Inc.

A comprehensive solution for managing all aspects of aircraft deicing operations including deicing truck location and aircraft slot assignments, detailed transactional data capture, real-time performance monitoring of deicing pads, trucks, and personnel, and post-operational reporting and data analysis.

AviationPros.com/12079324

CONTINUED ON PAGE 20

FOR SALE NOW!

Original Invoice \$485,471 – For Sale, Now \$349,000

GLOBAL 2200 TE-B DEICER

European Equivalent Model 8300 • Freightliner M2 Chassis • Purchase Order # 1953A

NEW/UNUSED

- 4 Blend Mix Deicing System
- SAGE Instant System, 3.4M BTU Heater
- Open Basket w/Premium Blend, 2 Man 450 lbs. (204 kgs)
- Telescopic Boom w/Articulated Fly Tip
- 47' (14.33 m) Working Height
- Mileage: 36
- Fluid Capacity: 2,200 gal. (8,316 litres)
- Fluid Tanks:
1,900 gal (7,192 litres) Deicing;
300 gal (1,135 litres) Anti-icing
- 2,200 gal reservoir tank
- Deutz 4 Cylinder Auxiliary Engine
- Weight Empty: 28,700 lbs (13,018 kgs)
- 370° Non-Continuous Rotation
- Inspection Immediate
- Save \$135,000 Off Original Invoice



ONLY 36 TOTAL MILES – NEVER PUT INTO SERVICE

VOGEL EQUIPMENT

www.VogelEquipment.com

Marc Vogel, Director • Vogel Equipment LLC
475 Chestnut Street, Suite No. 6
San Francisco, California 94133
USA: 415-576-9007 • London: +44 207 584 5690

AviationPros.com/12098308

The time has

INTERNATIONAL AIRPORT GSE EXPO



The International Airport Expo and GSE Expo are combining to create the **ONE and ONLY GSE-focused event** in 2016 ... **International Airport GSE Expo!**

Mark your calendar for **October 18-20, 2016** and point your compass to the Rio All-Suite Hotel and Casino in Las Vegas, Nevada.

What to expect...

Networking. This is the place where key decision-makers will meet with GSE equipment manufacturers and service providers.

Opportunity. One bigger, better GSE showcase.

Enjoyment. Las Vegas is famous for its buzzing energy and endless entertainment options!

Please visit our website at www.GSEexpo.com for more updates.

Presented by

IAEMA

**Ground
Support**
WORLDWIDE



come
to be

ONE!

IAEMA & Ground Support Worldwide
join forces to introduce International Airport GSE Expo



October 18-20, 2016 | Rio All-Suite Hotel and Casino | Las Vegas, Nevada, USA



▶ GLYCOL RECOVERY VEHICLE: GLYVAC

Inland Technologies International Ltd.

Inland's Glyvac glycol recovery vehicle offers fast clean up of spent aircraft deicing fluid, reducing environmental impacts while offering 45 percent greater fuel economy over similar models. It is capable of quick offloading of up to 1,800 gal/6,800 L in less than 10 minutes. Recovery functions are controlled from a panel inside the unit, minimizing the driver's time outside.

AviationPros.com/11259401



▶ DEICER EQUIPMENT: ONE SOURCE, COMPREHENSIVE SELECTION

Sage Parts

Sage Parts is your one-stop source for the finest deicer parts. Its extensive range of top branded products includes but is not limited to the high capacity and self-priming Hardi Deicer Pump 463 and the industry-standard Task Force Tips Ice Control Nozzle with pistol grip. Also available from Sage are top quality David Clark Headsets and remote station control, as well as the SOOTOMAGIC Soot Stick...the original and best soot stick.

AviationPros.com/11486618

▶ GLYCOL RECOVERY VEHICLE

Global Ground Support

Global Ground Support's Glycol Recovery Vehicle is mounted on an Isuzu NPR HD equipped with automatic transmission, a 5.1-liter engine and 113-liter fuel tank.

However, the unit can be mounted on any appropriately sized chassis. The vacuum and hydraulic systems are powered by an auxiliary engine, a Deutz oil-cooled three-cylinder diesel. This drives a 850-cfm positive displacement blower and provides hydraulic power for the electric over hydraulic controls.

AviationPros.com/10027698

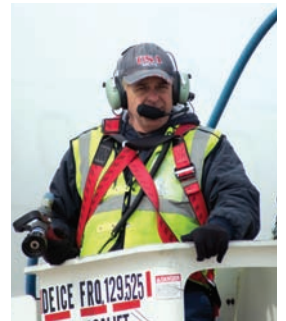


▶ WIRELESS COMMUNICATION SYSTEMS FOR DEICING OPERATIONS

David Clark Company Inc.

The David Clark Series 9900 Wireless Headset Communication system for deicing and anti-icing operations allows hands-free communication between the driver and bucket, clearly and in real time, and helps to prepare the aircraft exterior for on-schedule departure in a safe, efficient manner. The system maximizes reliability and minimizes downtime in all environmental conditions by housing the wireless components in water tight enclosures. Systems are available to accommodate communication through a mobile radio and for deicing vehicles that do not utilize two-way radios. A variety of headset styles are available, including dual and single ear models designed to handle the rigors of the aircraft maintenance environment.

AviationPros.com/12078196



▶ MOBILE DEICER CARTS

Tronair's mobile deicer carts deliver Type 1 fluid efficiently and effectively; the units come in a variety of voltages. Tronair also manufactures a unit designed specifically for servicing TKS anti-icing fluid reservoirs. The TKS unit is lightweight and easy to use, says the company.

AviationPros.com/10447488

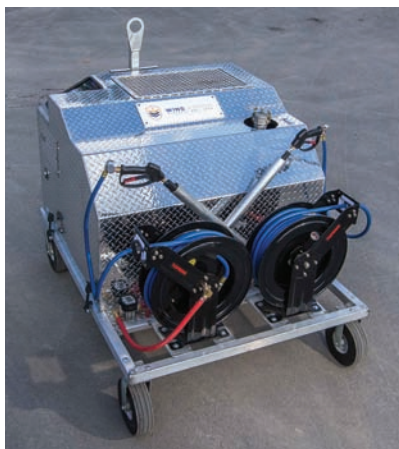


▶ MOBILE DEICER

Global Ground Support

The ORION is based on the Terex Genie mobile Telehandler powered by a 99-horsepower Cummins turbo diesel and can be driven and operated from the basket with the operational one-man drive system. It has a working height of 47 feet with a 27-foot forward reach and four-wheel drive and steer for maximum maneuverability.

AviationPros.com/10027698



WING ARMOR ANTI-ICING SYSTEM

Leading Edge Deicing Specialists

The Wing Armor anti-icing system tracks the amount of fluid dispensed to prevent over-spray. Two TURBO XL digital meters on the unit accurately measure the anti-icing fluid sprayed from each gun. The pressurized system applies fluid with dual application guns with dual meters, ensuring even application on both wings and allowing crews to spray both wings simultaneously. The system offers a low profile that enables it to fit underneath the wings of most business jets. The unit, which weighs less than 1,000 pounds when full of fluid, also features a tow bar so that it can be hooked up to a tug and moved around.

AviationPros.com/12081513

DEICING NOZZLES

U.S. Airmotive GSE

U.S. Airmotive GSE is proud to be a distributor of deicing nozzles manufactured by Task Force Tips. A single nozzle can be used in two steps to both deice and anti-ice

aircraft. The operator simply selects the desired fluid delivery system pressure, and the nozzle responds automatically. TFT backs its nozzles with a five-year warranty.

AviationPros.com/10724697

DEICING IT

Liquid Automation Systems (LAS-USA)

DeiceTrol™ Wireless deice truck telemetry and pad management system.

- Provides service dispatching to trucks and automatic capture of all required service data.
- Wirelessly consolidates data for reporting and invoicing.
- Tracks operator training and performance.
- Exports data to any 3rd party software.

AviationPros.com/11195350

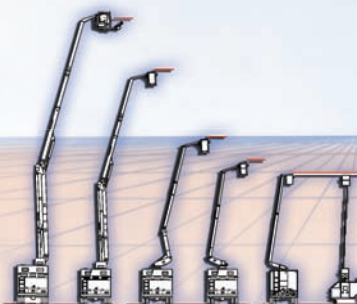


MODEL MT65P21 "EXPRESS HEAT" DEICER

The "Premier" Model MT65P21 "Express Heat" Deicer utilizes the Versalift Extended Reach Model VST6000 Aerial lift, providing 65' of working height.

More important, the MT65P21 incorporates the *Premier* boom forward design to provide the maximum amount of reach off the front of the vehicle utilizing the rapid deploy down riggers. During mobile operations, side reach of 34' and vertical reach of 46' can easily be accomplished.

Premier
ENGINEERING & MANUFACTURING, INC.
Simple, Dependable and Affordable



"Express Heat" reliability, easy access maintenance, extend reach capabilities, and lowest cost of operation is why we are the "Premier" deicer manufacturer.



Tel - 715-735-6440, www.premier-deicers.com

AviationPros.com/10017675

**FLEXIBLE FUELING HOSE
Hewitt, A Husky
Company**

Hewitt delivers the state-of-the-art solution to carry aviation fuel to movable service platforms and lift decks. The new Hewitt 5500 Premium JacRiser has twice the flexing durability and is much easier to use than competing products, making it ideal for any application where flexible hose is needed to load or unload petroleum products.

AviationPros.com/11111578



**REFUELING PRODUCTS
PEAR Corporation**

PEAR represents the finest products in refueling. We routinely provide custom orders and contracts to the busiest commercial airports, fixed-base operators and refueling services in the U.S. and Mexico. We compete on price, provide quality products and workmanship, and deliver great customer service over the life of the contract.

AviationPros.com/11196754

**GAMMON TECHNICAL
PRODUCTS
Gammon Technical
Products Inc.**

Gammon Technical Products is a manufacturer and distributor of aviation fuel (Jet and Avgas) equipment for quality control, handling and sampling, additive injection, static reels and cable, differential pressure gauges, overwing "Skyhawk" nozzle, bonding and grounding.

AviationPros.com/12013911



**NARROW BODY CART
BETA Fueling Systems**

BETA Fueling Systems offers the aviation industry the only green narrow body cart designed to operate in any weather. It is equipped with an advanced, interactive monitoring system that provides the user with precise metering and safety. The overall design saves time in operation, gives the equipment longer life with less maintenance, and is able to uplift fuel in any weather condition. The cart can be specified to be either JIG or A4A compliant.

AviationPros.com/12134120



**PRESSURE FUELING NOZZLE
Eaton Corporation**

Eaton's Carter brand pressure fueling nozzle (Model 64201) sets the industry standard for reliable performance. Rugged, modular construction improves handling and prevents leaks, and its innovative, simplified design involves fewer parts, meaning lower maintenance costs. It's also safer to use: A replaceable knob on the operating handle eliminates razor-sharp wear patterns prevalent on other nozzles. Various design options allow the nozzle to be tailored for different system requirements.

AviationPros.com/12023598



**CENTRIFUGAL PUMPS
Gorman-Rupp Company,
The**

Gorman-Rupp has met the challenge of accelerated aircraft fueling and defueling requirements for more than 50 years. Gorman-Rupp manufactures standard and self-priming centrifugal pump models for aviation ground support.

AviationPros.com/11191767



**GROUNDING REELS
Hannay Reels Inc.**

Hannay Reels HGR static grounding and/or bounding reels attach effortlessly to aircraft, fuel trucks and other equipment to eliminate any potential for electricity build-up in hazardous areas. This model is specifically designed to meet stringent requirements and accommodate the changing needs of leading OEMs in the aviation industry.

AviationPros.com/11191349



**FUEL TRANSFER TRUCKS
Tronair Inc.**

Tronair's Fuel Transfer Carts are equipped with two static discharge reels and are shop air operated to eliminate spark hazards. In addition the units filter 98% of particles up to 1/2 micron. Tronair also offers a variety of Fuel Sample Test Tools that quickly check fuel for contamination.

AviationPros.com/12020704





▶ DIFFERENTIAL PRESSURE MODULE - DPM™

Velcon Filtration Division, a Parker Hannifin Company



The DPM control unit continuously monitors the differential pressure between the inlet and outlet of a filter monitor or filter water separator vessel.

Whether static or onboard hydrant carts or refuelers, the DPM monitors the condition of the filter elements. In the event that the filter differential pressure reaches maximum allowable pressure, the industrial strength relay onboard the DPM control unit breaks the deadman circuit, effectively terminating the refueling operation.

AviationPros.com/10976317



▶ PRECI-FUEL BETA Fueling Systems

BETA is proud to offer Alfons Haar's PRECI-Fuel control system. The meter register has a simple & straightforward operator interface that provides a seamless, configurable, refueling operation. Aircraft fuelers and maintenance personnel are no longer required to work through proprietary electrical schematics for troubleshooting. Each system is configured and maintained across your fleet through a simple program, which will reduce maintenance cost and downtime. It can be easily configured to automate the steps in the fueling process, improve operator safety, reconcile fuel delivered, and eliminate overfilling issues. The PRECI-Fuel control system meets the most stringent safety requirements around the world.

AviationPros.com/12134124

▶ ENGINE MANAGEMENT SYSTEM

Rampmaster

Rampmaster, the premier manufacturer of aircraft refuelers for the worldwide aviation market, has received the final testing report from West Virginia University's Center for Alternative Fuels, Engines and Emissions (CAFEE) confirming that an aircraft refueling vehicle outfitted with the company's patented Engine Management System (EMS) consumes up to 78 percent less diesel fuel while pumping its jet fuel, a worldwide first in diesel fuel savings and greenhouse gas emissions.

AviationPros.com/10825688

Discover what it's like to Xcēd.



Revolutionizing GSE leasing and asset management.

Whether you're looking for short- or long-term lease financing, traditional fixed-purchase option financing, or to trade in or refurbish your used GSE, Xcēd Aviation Services delivers unique end-to-end solutions that meet—and exceed—your specialized needs.

We're fast. We're flexible. And unlike banks and other lessors, we don't lend based strictly on your bottom line. Instead we partner with you to look at the big picture, including your underlying equipment assets.

We make it easier than ever for you to get the new or used equipment you need to help your business grow.

Contact us today to discover what it's like to Xcēd.

Xcēd

AVIATION SERVICES

A Sasser Family Holdings Company

425 North Martingale Road,
6th Floor,
Schaumburg, Illinois 60173
844.213.9233
solutions@xcdaviation.com

www.xcdaviation.com

AviationPros.com/11535271



WIRELESS TANK MONITORING
Liquid Automation Systems (LAS-USA)

Wireless tank monitoring from your PC and mobile device. Battery powered allows for low cost installation and web enabled, eliminating IT red tape. The perfect solution for monitoring glycol and fuel tanks within the complex and disjointed airport infrastructure.

AviationPros.com/11193496

LOW PROFILE HYDRANT DISPENSER
ProFlo Industries LLC

ProFlo Industries manufactures a low-profile hydrant dispenser designed to fit under the wing of a Boeing 737 and Airbus A320. Our MicroDispenser is built in accordance with JIG, NFPA and ATA 103 with flow rates ranging from 450 GPM up to 800 GPM (1700 LPM – 3000 LPM). A modular concept is utilized to allow installation on a customer preferred chassis as well as easy re-chassis in the future. The unit is constructed from all aluminum and stainless steel for longevity and reduced maintenance requirements.



AviationPros.com/12075786

INTEGRATED FUELING SYSTEM
Cavotec Ground Support System

Cavotec has launched a new fueling element to its innovative E3 Gate, making the E3 Gate one of the most uniquely integrated aircraft servicing systems available anywhere in the world. Cavotec's E3 Gate – so called because it is designed to deliver optimal performance in Ergonomics, Economy and the Environment – supplies parked aircraft with 400Hz power, PCAir, blue and potable water and sewage – and now fuel – via underground pit systems.



AviationPros.com/11251115

Simple Complexity



GLOBAL
GROUND SUPPORT AN JET COMPANY
540 East 56 Highway • Olathe, KS 66062
globalgroundsupport.com • 913.780.0300

MIDAS is a telemetry system that allows anyone with approved access to view live data on any of their deicing trucks with any Internet-connected device. This advanced telemetry system can be purchased on new vehicles or retrofitted on any manufacturers' equipment. MIDAS monitors performance, location, surface areas, aircraft ID's, operators and more.



AviationPros.com/10017340



GARSITE SERVICE DEPARTMENT

Garsite

Garsite has now expanded into a fully-staffed service department including regional technicians. With the creation of the parts/service department, Garsite has become the largest aviation fueling equipment service provider in the country. The company offers fleet management and equipment maintenance programs, as well as compliance inspections (ATA 103, NFPA, etc.), equipment repairs and modifications for all makes and models.

AviationPros.com/10224389

FLOW METERS

Liquid Controls

Liquid Controls is an industry leader with more than 45 years experience supplying quality flow meters for the aviation industry. Liquid Controls also supplies mechanical registers and LectroCount electronic registers, which replace the mechanical register, calibration gears, and/or adjuster mechanism traditionally used on many flow meters and provide higher accuracy reading than mechanical registers.

AviationPros.com/10024600



AVFUEL CORPORATION

Avfuel Corporation

From refinery to wingtip, Avfuel Corporation provides fuel and services to every facet of the general aviation industry. Our programs and products include jet and avgas, FBO branding programs, contract fuel, aviation insurance, marketing support, pilot loyalty programs, quality assurance training, refueling and storage equipment, parts and supplies and aircraft de/anti-icing fluids. We also offer flight planning and trip support through Avplan, an Avfuel Company.

AviationPros.com/10025299



RADIO DIRECT

Improve Ramp Communication with David Clark Series 6200 Headsets for Two-Way Radios

Ramp communication is clear and simple with David Clark Company Series 6200 headsets designed to *connect directly* to a wide variety of portable radios *with no adapter required*. Push-to-Talk switch is located conveniently on the headset dome for ease of communication. For more information call **800-298-6235**.

Scan to find the right headset for your radio



Made In USA



**David
Clark**
WWW.DAVIDCLARK.COM

© 2015 David Clark Company Incorporated
© Green headset domes are a David Clark registered trademark.

AviationPros.com/10017163

▶ 28V DC POWER SUPPLIES

Current Power LLC

Current Power LLC manufactures energy-efficient 28v DC power supplies for corporate, military and commercial customers. The company is known most for its 600- and 400- amp mobile units, which provide 2,000- and 1,200-amp peak starting current, and its exclusive re-connectable input which makes a single model usable around the world, on any 50 or 60 Hz power.



AviationPros.com/12079230



▶ ENVIRONMENTALLY FRIENDLY PCAS

Verde GSE

At Verde GSE, our goal is to provide the freshest, most comfortable air for our customer's needs in the most efficient, environmentally responsible manner possible. Our green machines are good for the environment and good for your bottom line.

AviationPros.com/12014687



▶ DUAL OUTPUT CONVERTER

ITW GSE Military

The 270v DC/400Hz Dual Output Converter is the first of its type in the industry. The 270v DC meets the tough requirements for today's most advanced fighter aircraft, such as the F-35 Joint Strike Fighter. The Dual Output Converter is UL1012 listed, meets UFGS specs and also meets and exceeds MIL-STD-704F with the added advantage of individual phase control.

AviationPros.com/12078843



▶ AERO JETGO 550MTI 28V DC DIESEL HYBRID GPU

AERO Specialties

The AERO Specialties JetGo 550Mti 28.5V DC diesel-electric hybrid aircraft ground power unit (GPU) provides continuous and peak power in addition to offering advanced aircraft protection systems. JetGo GPUs have been specifically designed to meet the increasing demand in the aviation industry for a quieter, yet powerful, EPA Tier 4i rated GPU.

AviationPros.com/12111438

▶ TIER 3 28.5 VDC GPU

Tronair Inc.

Tronair's Tier 3 QSB electronic engine GPU is equipped with a Digital Display and Diagnostics module to view engine parameters. It operates with diesel or jet-A fuel, has a 35 gallon fuel tank for extended use, and a six phase alternator and rectifier for ultra-low DC output ripple.



AviationPros.com/12065190

▶ CABLE MANAGEMENT SYSTEM

Unitron Power Systems

Unitron presents the JetLinkSys™, a self-contained cable management system with a 400Hz, 28VDC, 270VDC or combination Solid State Frequency Converter. The System is available in an overhead or fixed configuration.



AviationPros.com/12032042

▶ ECO-FRIENDLY GPU

Start Pac/Rotorcraft Enterprises LLC

A patent pending eco-friendly aircraft ground power unit that uses up to 75 percent less fuel than traditional equipment has been launched by leading global ground support manufacturer, Start Pac. Start Pac's new lithium 26V hybrid ground power unit, the Hi-Brd 3 GPU, is one of the few units that meets current Tier IV EPA emissions standards. It is available in two models: The unique self-propelled version, which makes it simple and easy to maneuver for shorter distances as well as towable for longer distances and the Rover, which is an electric cart mounted drivable unit for longer distances that can also tow luggage and lav carts. The Hi-Brd 3 GPU also runs much more quietly and efficiently than traditional equipment and the simple easy to use key ignition allows for fast on the job training and operation. The unit is also equipped with a built-in battery warmer and charger.



AviationPros.com/11419782



**HOBART POWER COIL
ITW GSE Hobart**

The Hobart Power Coil combines the outstanding performance of the 400 Hz solid-state ground power unit with the latest technology of our well-known cable coil technology. The enclosure protects the 400 Hz and the cable retriever against direct sunlight and harsh weather conditions. The ease of use and design provides airport staff with a reliable and solid piece of equipment.

AviationPros.com/12064782



**PCA610 PCAIR
CONNECTOR
Page Industries**

PAGE Industries' P2000 PCAir Hose Reels and P3000 PCAir Yoke Assemblies are unique in design, ease of use and quality. PAGE's PCAir hose reel and yoke offer unequaled strength of a metal tube design that allows for smooth, rounded corners that don't damage the PCAir hose or harm the operator.

AviationPros.com/12067074

**JETLINKSYS
Unitron Power Systems**

Unitron Power Systems presents the JetLinkSys®, a self-contained cable management system with a 400Hz, 28VDC, 270VDC or combination Solid State Frequency Converter. The System is available in an overhead or fixed configuration.

AviationPros.com/12065203



**HAND CARRY
AXLE
JACK**

**MODEL #1504-50
15 TON CAPACITY**



Our Hand Carry Axle Jacks are designed to meet jacking specifications for normal tire/wheel and brake replacement. These self-contained jacks come with a manual hand pump and provide maximum capacity within a lightweight and compact configuration for ease of carrying and transporting to the jacking site.



ISO 9001:2008

Columbus JACK / Regent
"The Strength of Experience"

2222 S. Third St., Columbus OH 43207
Ph: (614) 443-7492 Fax: (614) 444-9337

sales@columbusjack.com ■ www.columbusjack.com

AviationPros.com/10134078

▶ **DIESEL 400 HZ GPU**
JBT AeroTech, Ground Support Equipment

The new diesel-powered, trailer-mounted, 180kVA GPU from JBT AeroTech® is the solution for powering today's next-gen aircraft. JBT's D-180 has been designed to supply the 180 kiloWatt service demanded by new, electronically sophisticated, commercial aircraft. JBT's D-180 is an innovative improvement over existing mobile ground power options.



AviationPros.com/12104548

▶ **MOBILE CONVERTERS**
Unitron Power Systems

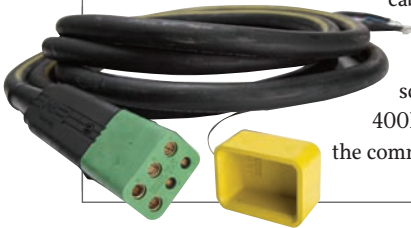
Through an innovative design, built-in test equipment (BITE) and modular construction, Unitron products assure maximum power availability and minimal repair time for the latest military aircraft including the F-22 A Raptor and the JSF F-35A. The PwrKart Series includes lightweight 115/200v AC, 400 Hz, 28v DC, and 270v DC mobile converters for aircraft ground power applications in the hangar or ramp area.



AviationPros.com/12079237

▶ **BANDED CABLES**
J&B Aviation

J&B Aviation is best known for quality and innovative 400Hz, 270V DC and Banded cables. J&B Aviation has patented many designs and offers replaceable contact sections for 400 Hz cables to prolong the life of cables, cable protection from scuff jackets to scuff rings and more. Our unique 400Hz cable assembly designs are the most popular in both the commercial and military markets.



AviationPros.com/12135760

▶ **ULTRALITE™ SERIES 28VDC GPU**
Unitron Power Systems

Our UltraLite™ Model 416 and Model 620 units have brought the technical advancements previously available to only 400Hz users to the 28VDC market. These new units meet the specification demands of every worldwide industry interface standard. Now available is a more precise form of 28VDC power for use with aircraft than required in these standards and it far outperforms any other all electric 28VDC or diesel engine generator GPU available today.



AviationPros.com/12136235

▶ **PCA CONNECTOR**
Page Industries

The PAGE 8-inch nylon composite PCAir connector comes standard with a field replaceable SNAP-IN gasket (no caustic glue, scraping or cure time), internal spinning ring to eliminate twists in the hose, built-in FOD screen and incorporates the largest internal diameter of any connector to provide maximum air flow to the aircraft. Easy to use "TWIST ON/OFF" technology utilizing a slot-filled design with a robust internal modular latching mechanism ensures a positive connection to the aircraft. No other PCAir connector offers all of the elements which make the PCA610 the premier connector in the world.



AviationPros.com/11346790



▶ **400 HZ POWER SYSTEMS**
Page Industries

Since 1976 PAGE Industries supplied the commercial and military markets the highest quality 400 Hz and 28V cable assemblies, central 400Hz power systems, gate park systems, baggage chutes, and PCA hoses, connectors and reels.

AviationPros.com/11196723

▶ **SOLID STATE 28VDC GPU**
Current Power LLC

Current Power is a leading manufacture of solid state GPU's. Our GPU will accept any three phase voltage around the world in a single unit. Also standard is our push to set current limit which allows you to precisely set the current limit before starting the aircraft.



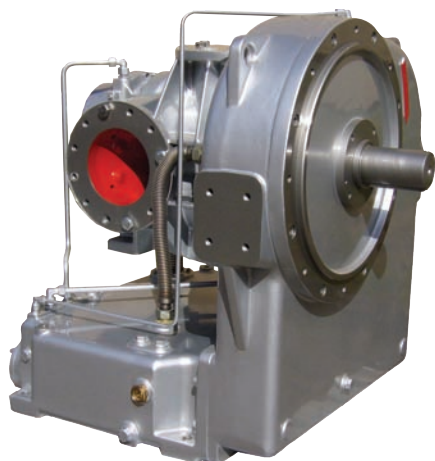
AviationPros.com/12065185



▶ **JETGO 800AL-RJ 28V DIESEL-HYBRID GPU**
AERO Specialties

The new JetGo 800AL-RJ 28V diesel-hybrid ground power unit is designed to provide clean, cool starts to regional jets and turboprops. Amazingly quiet, compact and powerful; all at the lowest operating cost in the industry. With an available 2300 peak starting amps, you can turn those engines with confidence!

AviationPros.com/12065199



**AIRSTART PARTS
GHH RAND Schrauben-
kompressoren GmbH**

Oil-free screw compressor airends, parts and service for air starts / jet starting compressor units.

AviationPros.com/12012977



**UNITRON UFC SERIES
Unitron Power Systems**

Unitron's UFC Series combo AC/DC GPUs include lightweight 115/200VAC, 400Hz, 28VDC, & 270VDC mobile & fixed converters for aircraft ground power applications in hangar or ramp areas. The dual output AC/DC GPU provides simultaneous AC & DC power from a single GPU. Because a single unit can do the work of two, Unitron's AC/DC PwrKart reduces operating and maintenance costs, & eases ramp congestion.

AviationPros.com/12056166



**GPU CABLE INTERLOCK
ASSEMBLY
AERO Specialties**

The ground power unit cable interlock assembly safety feature alerts the operator that the GPU cable is still engaged with the aircraft. The flashing light and 116dB buzzer prevents aircraft damage by warning the operator if they begin towing the GPU without securing the cable head in the GPU.

AviationPros.com/12057109



Worldwide Leader in Aircraft Refuelers



 **913-653-8100**
 **skymarkrefuelers.com**
 **sales@skymarkrefuelers.com**

AviationPros.com/11174155



TE.208 BAGGAGE/TOW TRACTOR

Charlotte of America

The TE.208 baggage/tow tractor is a battery-powered, four-wheel towing vehicle with enough power to provide a superior alternative to a full-size baggage tractor for those operations that don't require one. The unit is a compact highly maneuverable vehicle, which allows easy access to the operators compartment with good front and rear visibility. A low center of gravity provides excellent stability. There are currently over 1,000 of these units operating in the field today. The unit is capable of a top running speed of 9 mph (14.4 km/h) when empty with a drawbar pull of over 1,100 lbs. (499 kg). The operator's compartment contains all the controls and indicators necessary to drive the unit including foot-operated accelerator pedal, directional lever, keyless power switch, light switch, and horn switch. The battery connector is located for convenient power disconnects.

AviationPros.com/12017864



**ELECTRIC GSE CHASSIS
Canadian Electric
Vehicles**

Canadian Electric Vehicles has been building electric GSE chassis since 2001. These electric Isuzu NPR chassis have been delivered to customers in North America, Europe, Middle East and Australia. The latest trucks utilize an AC drive system with reduced maintenance cost and better speed control when maneuvering around aircraft.

AviationPros.com/12065160



**8800 SERIES
LEKTRO, Inc.**

LEKTRO's 8800 series is the workhorse of FBOs and militaries worldwide. With a towing capacity of up to 120,000 lbs and a low-profile, sit down operation, the 8800 series will tow virtually every regional airline, long-range business jet or military fighter out there.

AviationPros.com/10025896



**ELECTRIC TOW TRACTOR
AERO Specialties**

The Eagle Tugs eXL-16 Electric AWD/AWS Commercial Aircraft Tow Tractor features utilitarian characteristics that are unrivaled on the ramp. Capable of towing 115,000 pounds, the eXL-16 front-operated, three-seat tug features an 80V AC electric drive motor. Environmentally friendly power for all-weather towing, the eXL-16 will safely meet your towing requirements.

AviationPros.com/10775848



**BATTERY MONITORING
Vebar**

Battery monitoring systems. Remote fleet monitoring. Battery organizing systems. Battery data analyzers and catalogs for forklift batteries. Web-based and completely wireless and multiple site monitoring.

AviationPros.com/11195598

**GSETRACK
Undagrid**

GSETrack offers an outstanding solution for localization of non-motorized ground support equipment (GSE) at airports. There's nothing like it anywhere in the world. Receive valuable location and equipment data, without network installation or communication costs. We combined everything in a small device, which can be installed in less than one minute, without needing IT skills. The devices can be used worldwide, without special permissions. All information is available anytime, anywhere via the GSETrack web based software solution.



AviationPros.com/12127143

**IDLE-LOK
Safety Systems &
Controls Inc.**

Idle-Lok, a simple device to shut down an engine after user-programmable time if running idle. It can reduce idling 30-40 percent, wear and tear on equipment and maintenance. It has low temperature override for frigid conditions.



AviationPros.com/10026542



ELECTRIC TOWBARLESS TUGS

Tronair Inc.

Tronair offers environmentally friendly electric towbarless tugs. Models include the JP30, JP75 and JP100 with towing capacities of 30,000 pounds, 75,000 pounds and 100,000 pounds, respectively. Move your units safely and efficiently with these rugged, compact and maneuverable units.

AviationPros.com/10775871



LITHIUM-POWERED TRACTOR

NMC-Wollard Inc.

Compact, maneuverable 60-hp electric AC-powered tow tractor features the highly efficient Corvus lithium ion polymer battery system. Pull capacity of the 40e is 4,000 pounds at the drawbar. Rear drive axle is planetary reduction type for efficient torque multiplication in baggage, light cargo and small to medium aircraft moving/towing applications. Short 60-inch wheelbase provides maneuverability on congested and busy tarmacs/ramps.

AviationPros.com/10810927



ENVIRONMENTALLY FRIENDLY PCAS

Verde GSE

At Verde GSE, our goal is to provide the freshest, most comfortable air for our customer's needs in the most efficient, environmentally responsible manner possible. Our green machines are good for the environment and good for your bottom line. Verde GSE's line of PCA units are born from the toughness and simplicity demanded by the military, utilizing the highest quality components and most advanced technologies available. With a rock-solid foundation in energy efficient technologies, we are able to provide a PCA solution with unmatched efficiency, flexibility, and serviceability.

AviationPros.com/12014687

ZERO EMISSION GSE

Harlan Global Manufacturing LLC

The Harlan Charger is zero emission, high power, low maintenance and operator-friendly electric GSE. This 80V, 4,500-pound DBP electric unit is designed for the needs of today's GSE. The high-power, zero-emission Charger will meet most baggage and regional aircraft towing requirements, allowing the GSE world to remain productive.

AviationPros.com/10027051



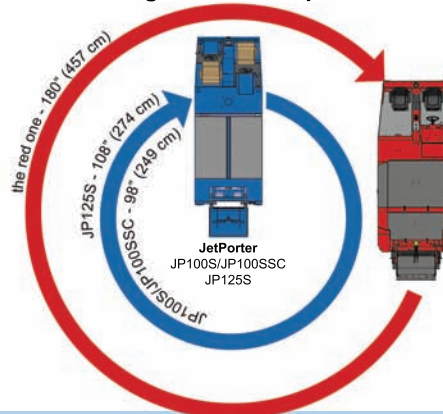
JetPorter JP125S Electric Towbarless Tugs

- Dual A/C motors on the front tractive wheels are independently excited
- Best turning radius for an operator driven tractor
- Regenerative braking creates a smooth deceleration and reduces stopping distance

125,000 lbs Towing Capacity



Turning Radius Comparison



TRONAIR

www.tronair.com | www.jetporter.com
1-800-426-6301

USA: sales@tronair.com | Europe: saleseurope@tronair.com | Asia: tronairasia@tronair.com | China: nyao@tronair.com | Australia/New Zealand: cjones@tronair.com

AviationPros.com/10017892



GROUND HANDLING SERVICES

Swissport International Ltd.

Swissport International Ltd. provides ground services for around 224 million passengers and 4.1 million tonnes of cargo a year on behalf of some 700 client-companies in the aviation sector. With its workforce of around 55,000 personnel, Swissport is active at 266 airports in 45 countries on five continents and generates consolidated operating revenue of \$3.1 billion.

AviationPros.com/10025374



AIRPORT SERVICES

Aviance

Aviance, the first international alliance in airport services, was launched in the year 2000 and now has 12 members that offer ground handling solutions in 19 countries. The alliance dynamics assist members in increasing market share thanks to a range of benefits ranging from operations to commercial.

AviationPros.com/10026999



REPAIR AND MAINTENANCE

Oxford Airport Technical Services

Boarding bridge repair and maintenance services for airports and airlines is available from Oxford Airport Technical Services.

AviationPros.com/10133223



A Sasser Family Holdings Company

XCED AVIATION SERVICES

Xced Aviation Services - Sasser Family Holdings Company

Sasser Family Holdings, Inc. is pleased to announce the opening of our aviation ground support equipment finance and asset management subsidiary; Xced Aviation Services, LLC. Xced will be providing single investor equipment financing solutions and life cycle management of all aviation ground support equipment for North America. We look forward to delivering end-to-end aviation ground support equipment financing and asset management solutions that will truly exceed your expectations.

AviationPros.com/12014721



REFURBISH/REPOWER GSE

Hercules Engine Components

At Hercules, we can completely recycle your old belt loader, tow tractor, pushback or deicer to like-new condition for a fraction of the cost of a new piece of equipment. Our refurbishment program includes a new EPA-certified diesel or gas engine, new hydraulic pump, hydraulic hoses, dash and electrical system. Your unit will look and operate like new. We also offer a state-of-the-art electric conversion option that may pay for itself with fuel and operating cost savings.

AviationPros.com/10363184



AVIATION SERVICES - ASIG

ASIG (Aircraft Service International Group)

ASIG is one of the largest independent aviation services companies in the world with substantial operations in more than 65 cities throughout North America, Europe and Asia. For more than 55 years, the company has been providing ground handling, fueling, passenger, cargo, deicing and airport facility services to commercial airlines and airports around the globe.

AviationPros.com/10024994



GSE SALES, RENTALS AND LEASING

Davin Inc.

Davin Inc. maintains a substantial inventory of late model GSE for immediate response to short-term rental requirements, and offers longer term leasing and sales of both new and used equipment.

AviationPros.com/10027003



REFURBISHMENTS

JBT AeroTech, Jetway Systems

JBT AeroTech provides complete refurbishment for all Commander loaders, FMC and Trump deicers. As the original equipment manufacturer, JBT AeroTech ensures that all refurbishments receive genuine JBT AeroTech parts, use skilled labor, and are brought up to date with all service bulletin items. Partial rebuilds and upgrade kits are also available, as well as diesel to electric power conversions for the Commander 15 Loaders.

AviationPros.com/10027229

NEW, USED AND ZERO-TIMED GSE

Mercury GSE

Mercury GSE supplies new, used and zero-timed GSE available for purchase, rental or long-term lease. Our 30 years of ground handling and GSE experience will provide you with the facts you need to make the right decisions. We carry a varied selection of used GSE in stock at all times.

AviationPros.com/10817962



GSE LIFE CYCLE SPECIALISTS

Somerset Aviation Capital

Somerset GSE covers all GSE asset types, and offers financing options that include short-term rentals, rent-to-own structures and long-term leases. And with our global lessor financing capabilities in the U.S., Canada, most of Europe, and parts of Asia, Somerset GSE can ensure a customized financing solution for our clients' specific equipment requirements, no matter where they are.

AviationPros.com/10817997



GSE SUPPORT

Servicore G.S. Corp.

For more than 10 years we have served our customers with complete satisfaction. We have the knowledge on ground power units, loaders, air starters and other equipment to bring our customers the best service possible. We provide sales, rentals, replacement parts, safety supplies, ramp accessories, technical support and training.

AviationPros.com/10817955



LEASING AND FINANCING SERVICES

Fortbrand Services, Inc.

Fortbrand Services has been in the business of leasing, financing, renting, maintaining and dealing in aircraft ground support and refueling equipment for more than two decades. The company uses its experience and expertise to provide tailor-made programs to meet the specific requirements of its customers.

AviationPros.com/10026646



SERVICE PROVIDER

Fraport AG Ground Services

Fraport is one of the major international ground handling providers continuously improving the global network by extending its activities world-wide. Fraport offers integrated services to customers within its growing network.

AviationPros.com/10026643

AVIATION SERVICES- LANDSIDE/AIRSIDE

PrimeFlight Aviation Services

PrimeFlight Aviation Services include: ramp services, cabin cleaning, baggage handling, skycaps and ticket verification. PrimeFlight is a customer service focused provider.



AviationPros.com/10026624



**LAV AND WATER CARTS
AERO Specialties**

AERO Specialties has designed a new series of lav and water carts for regional airlines and busy FBOs. In response to requests from regional airline customers, the new carts are built to exceed regionals' rigorous standards for ramp equipment durability. The LC60-RJ Lavatory Service and WC60-RJ Potable Water Service carts share the same 4,000-pound capacity rust-proof chassis and insulated tank enclosure system, as well as winterization and electric pump system. AERO's RJ series lavatory and water carts continue to be in strong demand around the globe.

AviationPros.com/10025317



**POTABLE WATER TRUCK
Stinar Corporation**

The SPW-350PL Potable Water Truck has a 500 gallon water tank capacity. We also offer models with 600,700 and 1000 gallon capacities.

AviationPros.com/10025864

**VACUUM LAVATORY SERVICE TRUCK
Accessair Systems Inc.**

New features: An automated control system, based on preset quantities, whereby the selection of the aircraft type by the operator allows the aircraft to be serviced automatically. For enhanced record keeping, a Data Logger is also available allowing the retrieval & storage of data via WiFi, USB, etc.

AviationPros.com/10027590



**CRUSH-PROOF
LAVATORY DUMP HOSE
U.S. Airmotive GSE**

The crush-proof lavatory dump hose from U.S. Airmotive GSE features 100 percent urethane hose wall with helix to protect hose (no wire); triple urethane cuffs; UV resistant; bending radius 4 inches; translucent blue; available in many lengths.

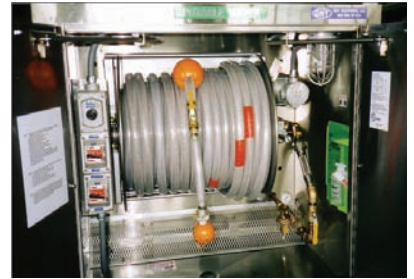
AviationPros.com/10024872



**PUROGENE AIRCRAFT
SANITATION SYSTEM
AeroSafe Products Inc.**

P.A.S.S. Purogene Aircraft Sanitation System from Aerosafe disinfects and sanitizes aircraft water systems in minutes. Used for general aviation, corporate and commercial aviation and marinas. Available as roll round, full water cabinets or retrofit models. All stainless steel construction.

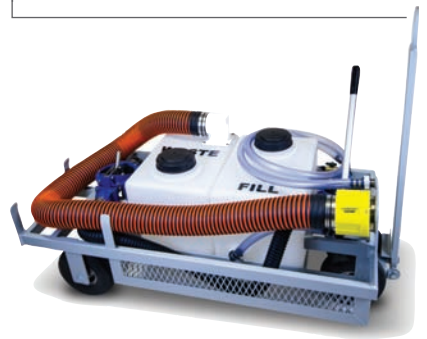
AviationPros.com/10026365



**POTABLE WATER
CABINETS
GNY Equipment LLC**

GNY Equipment's Potable Water Cabinets are UL listed units that expedite dispensing of potable water to aircraft in congested loading locations through 200 ft. + hoses. Cabinets are double wall, insulated and heated stainless steel with two large doors. Can be mounted or flush through terminal wall, also on pedestal of loading-bridge or be free standing.

AviationPros.com/10026291



**LAVATORY SERVICE
CART
Alberth Aviation**


Alberth Aviation manufactures a refined Lavatory Service Cart for cleaner use and lower maintenance cost. It is the smallest, least expensive cart on the market. It is perfect for corporate flight departments and low volume FBOs. The compact low profile design maneuvers easily and fits through a standard hangar bathroom door.

- Heavy duty construction
- Standardized parts
- Two 16 gallon tanks (fill/waste)
- Small, compact design
- Easy maneuverability
- Fill Line Bleed Port
- Hoses and couplings included

AviationPros.com/10024493

▶ **RECONNECTABLE
POTABLE WATER
AND LAVATORY
SERVICE BREAKAWAY
COUPLINGS**

**AIRLINX Aircraft
Services Inc.**



Breakaway couplings are available for potable water and lavatory service applications. The reconnectable design does not require any replaceable parts upon disengagement. After a mishap, it can be reconnected within seconds on the ramp, ensuring there is no downtime in servicing aircraft.

AviationPros.com/10026850




▶ **LAV TRUCK
NMC-Wollard Inc.**

Lavatory service truck (Model 770) features F-350 chassis, 400-gallon (U.S.) waste capacity, 11 ga. stainless steel tank. Potable water truck (Model 402) features F-350 chassis and 450 gallon capacity stainless steel tank.

AviationPros.com/10810934

▶ **LAV HOSE
Hi-Tech Duravent**



The Hi-Tech Duravent Lav Hose is designed to withstand the rugged conditions of an airport ramp. This industry tested, durable urethane hose is thermally bonded with nylon helix, and is abrasion, crush and kink resistant. It is translucent blue with smooth interior walls and durable blue cuffs.

AviationPros.com/10027375



▶ **POTABLE WATER CARTS
Par-Kan Company**

Par-Kan Offers a Variety of Potable Water Carts.

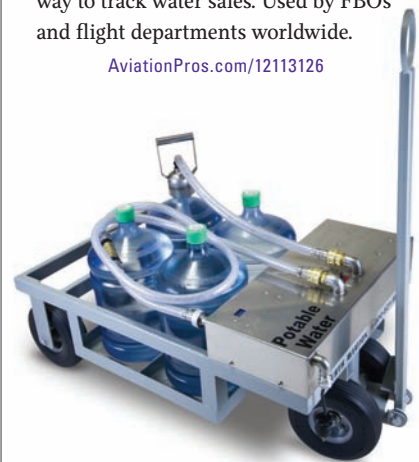
- 120 gallon capacity
- 250 gallon capacity
- 450 gallon capacity
- Stainless Steel or Poly Tanks Available
- Fifth Wheel Steering
- Towbar Activated Brakes
- Onboard Battery and Battery Charger
- Winterization Package Available with Immersion and Compartment Heaters
- 12 Volt Electric or Gasoline Honda Engine Pumps
- Powdercoat Finish

AviationPros.com/10024595

▶ **POTABLE BOTTLED
WATER CART
Alberth Aviation**

Alberth Aviation manufactures a Potable Bottled Water Cart designed to deliver guaranteed clean water to the aircraft every time. Four standard 5 gallon water bottles make this cart easy to maintain and provide a simple way to track water sales. Used by FBOs and flight departments worldwide.

AviationPros.com/12113126



Tarmac Tough



You're in a tough business. You are responsible for servicing millions of dollars worth of aircraft at a moment's notice, in all kinds of weather. Equipment failure is not an option.

At AERO, everything we manufacture is proudly made in the U.S.A. and designed to go the distance. Our quality is one thing that you won't have to worry about.



+1 208-378-9888 | www.aerospecialties.com CE

AviationPros.com/10016920



ENGINE COMPRESSOR WASH RIG

A.T. Juniper (Liverpool), Ltd.

The 2x25 gallon engine compressor washing rig is the mainstay of the Juniper range. Versatile enough to tackle most engines when partnered with our growing list of wash probes, lances and spray rings, yet maneuverable enough for the most remote areas of an airfield.

AviationPros.com/10027072

JETPORTER ACCESSORIES AND AIRCRAFT ADAPTERS

JetPorter

JETporters are designed to be full-featured and compatible with a wide array of aircraft. However, we know that sometimes there are parts you need for your operation. Whether it's a set of tire chains for extra traction on a snowy tarmac or an adapter to work with your specific aircraft, we have you covered.



AviationPros.com/12111180

BATTERY-POWERED VERTICAL LIFT

JLG Industries Inc.

The Model 19AMI-DC has an auto power battery save that shuts off power when it is idle. The standard platform measures 25.5 inches by 26 inches and is fitted with a quick change mount for optional platforms including an oversize gull wing and front entry platform and an extension platform for 24 inches of additional reach over the front of the lift.



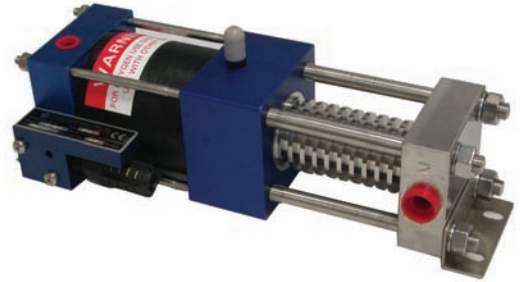
AviationPros.com/10025323

COMPACT OXYGEN/NITROGEN GAS BOOSTER

Hydraulics International Inc.

Hydraulics International's compact air and/or hand driven oxygen/nitrogen booster rated to 3,450 psi. Ideal for filling or topping off O2 bottles from as low as 300 psi. Operated by a low-pressure shop air compressor or manually. Air consumption is less than 6 scfm operating at 60 cycles/minute.

AviationPros.com/10025559



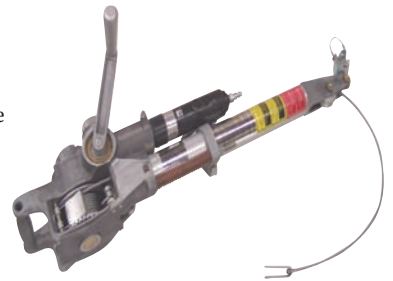
MAINTENANCE HOISTS

PF Fishpole Hoists Inc.

PF Fishpole hoists are precision-engineered aircraft equipment maintenance hoists for single attach point equipment installation and removal on all commercial aircraft:

- Valve engineered products.
- Short lead times.
- Speedy service at many locations worldwide.

AviationPros.com/10441392



MAINTENANCE STAND

Clyde Machines Inc.

Maintenance Stand features non-slip, self-cleaning steps and platform floor with a 500-pound capacity. Heavy-duty casters and 16-inch solid tires make it easy to move. Upper-platform railings can be lifted out and store below. Mid-platform railings can be easily swung down and out of the way. Platform heights are 57, 75 and 86 inches.

AviationPros.com/10895715



OXYGEN FILL ADAPTER TOOL

Alberth Aviation

Alberth Aviation's Oxygen Fill Adapter tool is a new design combining three tools into one. You no longer need a fill port connector, a wrench, and a screwdriver to service the aircraft oxygen. The new design has a fill port connector inside of a spring loaded retractable socket driver with a removable attached screwdriver bit.

This design allows easy access to tight clearance oxygen fill ports, secure removal of the service port fill nut, and allows the user to know they have achieved a tight seal before servicing the aircraft's oxygen system. The design also prevents service port nut stripping and over-torque incidents.



AviationPros.com/10168216



MH-60 JAYHAWK MAINTENANCE STANDS AND HANGAR EQUIPMENT

All Metal MS (Maintenance Stands)

The custom "Safety First" maintenance stands, door racks, cowling racks, blade racks and work tables were designed for use when performing both routine maintenance and complete overhauls on the MH-60 Jayhawk, and can be used on all models of the Black Hawk. All Metal developed the concept of designing a cohesive set of smaller stands which surround the aircraft with platforms crafted for specific functionality. The door racks, cowling racks, blade racks and work tables were designed for hangar space efficiency and storage functionality.

AviationPros.com/12129681



AIRCRAFT JACK Malabar International

Malabar produces top quality, durable aircraft jacks featuring manual and optional air-operated hydraulic pumps, hard chrome-plated cylinder bores, and secondary cylinder seals.

AviationPros.com/12103077



LANDING GEAR ACCESS STAND Liftsafe Fall Protection Inc.

The Landing Gear Access Stand from Liftsafe Fall Protection provides maintenance access to both main and nose landing gear and wheel well areas. The unit has lateral, vertical and "leg width" adjustments, allowing adaptability to most wide body and several narrow body configurations. The unit comes fully padded to ensure aircraft protection in maintenance scenarios.

AviationPros.com/12077340



HIGHLIFT TRUCK Stinar Corporation

The HLV-2557 highlift truck has a 6,000-pound payload capacity and can service aircraft door sill heights up to 325 inches. Mounted on ULSD or Export model diesel chassis. Available on the GSA schedule along with the HLV-2559, HLF-2550 and HLF-2741 highlifts. All models are designed, engineered and built to USAF PD or CID's.

AviationPros.com/12103312

NEW CRUSH PROOF LAVATORY DUMP HOSE

You can Run over it, Smash it or Drag it and STILL USE IT!

CRUSH PROOF LAV HOSE WATER HOSES, COUPLINGS AND FITTINGS LAV COUPLINGS AND FITTINGS

GSE PRODUCTS GSE PARTS

ATTACHABLE PLUGS AND RECEPTACLES AC/DC CABLE PROTECTOR COVER JET STARTER HOSES AND COUPLINGS **NEW** FULLY WELDED PCA HOSE

SERVING THE GSE INDUSTRY FOR OVER 50 YEARS

HOSES: LAVATORY DRAIN-BLUE & POTABLE WATER-PCA-AIR/HEAT-JET STARTER
 COUPLINGS FITTINGS AND CONNECTORS • CASTERS • WHEEL CHOCKS • DAVID CLARK
 LAV METERS • PARTS FOR TUG • HOBART • TRILECTRON • PARKAN • FMC • CLYDE
 CONVEYOR BELTS • SAFETY VEST • DIRECTIONAL WAND • TOW BARS • CARGO NETS
 STRAPS • TIEDOWN RINGS • MATERIAL HANDLING AND MORE

U.S. AIRMOTIVE GSE
 YOUR ONE STOP SOURCE SINCE 1963

MAIN FLORIDA OFFICE

P.O. Box 660474
 Miami Springs, Florida 33266
 Tel: 305.885.4992 Fax: 305.885.9537
 Email: sales@usairmotivegse.com

CALIFORNIA SALES OFFICE

2110 Artesia Blvd. # B209
 Redondo Beach, California 90278
 Tel: 310.327.8407 Fax: 310.327.8439
 Email: paula@usairmotivegse.com

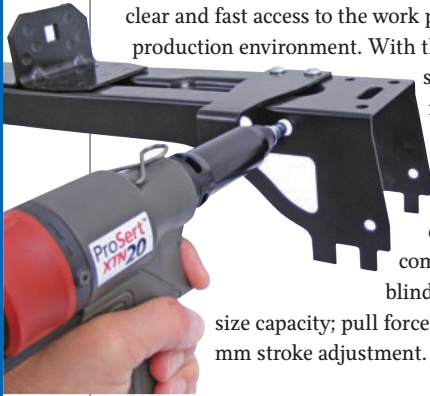
www.usairmotivegse.com

AviationPros.com/10017906

BLIND RIVET NUT INSTALLATION TOOL

STANLEY Engineered Fastening

The ProSert XTN20 provides high speed installations, improved assembly productivity, clear and fast access to the work piece, and setting adjustments easily made in a production environment. With the patented, quick-installation mandrel exchange system and the tool-free stroke and force setting features, changeovers are easy and installations are consistent and reliable. Weighing just 1.59 kg including the (M6) nosepiece assembly, it is much lighter than most comparable tools. It is designed with a low-force, single-action trigger and comfortable weight balanced ergonomic handle. The blind rivet nut installation tool has an M3 to M10 thread size capacity; pull force is approximately 17kN @ 5 bar; and provides up to 7 mm stroke adjustment.



AviationPros.com/12110475

ONE-PERSON WHEEL CHANGE

ColumbusJACK/Regent

The Wheel & Brake Dolly is used worldwide by most major airlines, making wheel changes a one-person operation. It is a portable self-contained unit capable of handling and transporting either a wheel/tire or brake assembly during the removal from or installation on an aircraft.



AviationPros.com/11195549

VALUE SERIES STAINLESS STEEL REELS

Reelcraft Industries Inc.

Reelcraft's Series LC stainless steel hose reels are developed for light-duty, spring-driven hose reel applications. The reel is built with high quality stainless steel components for maximum corrosion resistance. The eight position ratchet locks the reel at the desired hose length while the guide arm adjusts to five convenient positions.



AviationPros.com/12079381

SPILL CONTAINMENT

Andax Industries LLC

The Trap Pac Pro is the newest innovation in spill containment. It holds two complete spill systems in one color-coded, portable, heavy-duty case. One side contains an Oil-Based Spill Pac with enough sorbents to contain a 10-gallon spill. The other side holds a reusable 100-gallon Tank Trap containment pool. These two systems take the guesswork out of spill response. Matching color-coded equipment labels can be used to identify equipment before a spill happens.

AviationPros.com/11654289



THROATLESS SHEARS

Kett Tool Co.

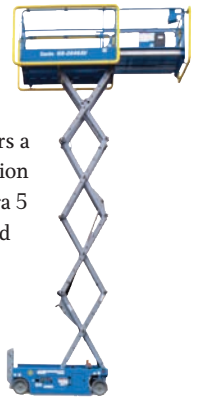
Kett Tool provides superior flexibility for making complex straight and curved cuts in cold rolled (C.R.) mild steel and stainless steel with the lightweight, one hand maneuverability of the KL-2040 Throatless Shears. The KL-2040 features a powerful 4-amp straight handle, single speed electric motor capable of producing shear speeds up to 2,500 rpm to easily and quickly cut 13 gauge C.R. mild steel and most grades of stainless steel (up to 15 gauge) at 220 inches per minute. The tool is lightweight at 7 pounds, and has a cutting radius of 10 inches for maximum maneuverability.



AviationPros.com/12105924

AVIATION SCISSOR LIFT

The Genie® GS™-2646 AV scissor lift offers a smooth, powered extension deck option with an extra 5 feet of reach. The Padded Aircraft Protection Rail (PAR) system cushions the platform railings. Gates at both ends provide easy access for the operators. The platform extension deck and gates are interlocked, preventing the machine from being operated while the deck is extended or while the gates are open.



AviationPros.com/10431089

TIER IV SOLUTION

Engine Distributors Inc.
Featuring a complete line of EPA- and CARB-certified 1.5, 2.3, 4.0 and 6.8 LSI engines ranging from 20 to 200 horsepower. Available in gasoline, LPG, CNG, natural gas and dual fuel. Our engines are the solution to high-priced Tier IV diesels.



AviationPros.com/10442466



AERO 3-BOTTLE OXYGEN SERVICE CART COMPLETE (REMOTE) AERO Specialties

Our 3-Bottle Aircraft Oxygen System Service Cart comes complete with a booster and regulator system, and is designed for remote (ramp) and/or in-hangar use. This cart uses N2 to drive the O2 booster, or shop air if used in hangar (100 psi input). The tilting bottle rack allows for easy loading and unloading of bottles. The 5th-wheel steering provides optimal in-hangar maneuverability by hand, while the heavy-duty running gear and towbar allow for unlimited vehicle towing across the ramp or airfield.

AviationPros.com/12112460

WIRELESS VEHICLE MANAGEMENT SYSTEM I.D. Systems Inc.

The AvRamp Wireless Vehicle Management System (VMS)



for airport vehicles provides comprehensive management of ground support equipment and operators, and is the only solution that improves service, safety, and security, while maximizing

productivity and reducing costs for airlines, airports, and ground handlers. AvRamp reduces capital and operating costs, optimizes fleet size, reduces damage, provides an additional security layer, and enables real time GSE visibility. AvRamp is TSA- and FAA-approved for use at all U.S. airports.

AviationPros.com/12054604

GSETRACK Undagrid

GSETrack offers a solution for localization of non-motorized GSE. We combined everything in a small device, that can be installed in less than one minute, without needing IT skills. All information is available anytime, anywhere via the GSETrack web based software solution.

AviationPros.com/12127143



HAZARDOUS WASTE DISPOSAL Newstripe Inc.

The AeroVent 1 by Newstripe is easily installed and includes an activated carbon filter to trap escaping vapors more quickly than any other manually operated aerosol can disposal system.

AviationPros.com/12110447



CORDLESS CUTTER Walter Surface Technologies

Walter Surface Technologies launches ZIPWHEEL cutter, the most powerful cordless cutter that can drive a 6-inch cutting wheel. The ZIPWHEEL cutter is specifically designed for metal workers who are consistently on-location without access to a power supply. This unique tool utilizes the latest battery technology and features an exclusive Ventilated Charging System. The system comprises of an 18V/5.2Ah battery, and is available in 4½-, 5- and 6-inch diameters starting January 2015 in an exclusive starter kit for a limited-time.

AviationPros.com/12031769



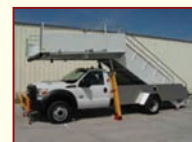
WE HAVE STAIRS

FROM RJ TO A340 CHASSIS MOUNTED AND TOWABLE

CELEBRATING 20 YEARS



PNX-CMPPS96/150 NARROW BODY STAIR



ALSO: LAVATORY AND WATER SERVICE CARTS & TRUCKS MAINTENANCE LIFTS BELT LOADERS



3000 INDUSTRIAL AVENUE 3
FT. PIERCE, FL 34946
PHONE: (772) 595-6386 / FAX: (772) 595-6389
EMAIL: phoenixgse@earthlink.net
WEBSITE: www.phoenixgse.com

AviationPros.com/10117661



A-380 PASSENGER LIFT
Ground Support Specialist LLC

The GS260 is an electrically powered disabled passenger lift that will service aircraft up to the A-380. This proven and simple design allows for single-person operation. These highly reliable units have an excellent track record and require minimal maintenance.

AviationPros.com/10222703



DURABLE STAIRS
FAST Global Solutions

Heavy-duty stair frame can support 2,500 pounds (1,134 kilograms). The stairs can easily be towed into place and then adjusted to the best height, from 85 inches (2.2 meters) to 152 inches (3.9 meters) with a single-lever hydraulic system. An automatically latching "X" brace securely locks the stairs at the needed height, eliminating potential errors that can occur with manual locks. For added safety, the stairs feature a Morton non-slip walk surface and are illuminated with a battery-powered lighting system.

AviationPros.com/12032069

WHEELCHAIR LIFT SYSTEM

AccessAir

This is a unique engineering development Accessair being the 1st in the world to have developed this design on a telescopic stair to better serve passengers. Our system consists of a telescopic ramp being able to go up and down the stairs at any of the elevations that the APS stairs is positioned at. The system will follow all ADA and OSHA regulations. This system will enable the en-planeing and de-planeing of the wheel chair passenger without having to use some other vehicles or extra personnel. The recently developed wheel chair lift system is efficient, compact, adapted to today's need, And avoids need to purchase additional equipment. Disabled passengers movements will be easier, no extra personnel needed.

AviationPros.com/12038629



COBUS 3000

Cobus Industries LP

The COBUS 3000 Airport People Moving Bus is used at more than 350 airports around the world to transport airline passengers between terminals, concourses, and aircraft parked off-gate on hardstands. Power options include diesel (only 1 US gal./hour), CNG, and now also full electric operation. Manufactured in aluminum, the COBUS is offered with a life expectancy of 25 years.

AviationPros.com/10237231

2820 PASSENGER STAIRWAY

AERO Specialties

AERO Specialties 2820 Passenger Stairway services aircraft with sill heights from 88-161 inches.

Units feature an extra-large platform with sliding handrails to clear the aircraft door and soft rubber

bumpers to prevent marring of the aircraft. Included are stabilizer jacks, a folding towbar, a hand pump for height adjustment, as well as a battery powered LED lighting system with adjustable timer.

AviationPros.com/12035173



RADIAL PASSENGER BOARDING BRIDGES

Ameribridge

Ameribridge provides new radial boarding bridges for the commuter aircraft operations market. Ameribridge acquired all rights to the Dewbridge product line in 2012, and is now taking the radial boarding bridge to an even higher level of service and reliability. Several design, engineering and component enhancements keep the new Ameribridge radial boarding bridge at the top of the aviation industry's list for safety, security and comfort in serving customers on commuter aircraft.

AviationPros.com/10976888



ELECTRIC-POWERED STAIRS

NMC-Wollard Inc.

Popular CMPS - 170 Stair, with a reach up to 170.5 inches (B-767) is available with electric power. Quiet, efficient propulsion system offers a proactive option (diesel- and gas-powered units also available). Highly maneuverable unit is easy to position - operator can see doorsill during approach to the airplane. Model 170 is designed to ARP 836 and shares design elements and parts commonality with several other NMC-WOLLARD products.

AviationPros.com/10857446





ALUMINUM STAIRS
Aeroservicios USA Inc.

In Aeroservicios USA Inc. we manufacture for sale, rent, or lease brand new 100 percent aluminum passenger stairs for different aircrafts:

- Aeros 95 inches-105 feet for B-737
- Aeros 135 inches-147 feet for A-320
- Aeros 95 inches-145 feet from B-737 to A-320

Its hydraulic extension is managed through a manual pump. LED lights.

AviationPros.com/12033792



**MODULAR ACCESS
STEP/PLATFORMS**
Semmco Limited

Semmco partnered with ZACHER access and platform manufacturing introduce a new range of light weight, compact and variable access and step systems. These modular systems are easily repaired, easily used, are environmentally friendly and safe due to the range of anti-skid/slip surfaces. The modular structures are manufactured from special high-grade aluminum and similar high strength aluminum joints, providing high rigidity through the aluminum sections giving a weight saving over steel of 60 percent.

AviationPros.com/10025428

TOWABLE STAIRS
FAST Global Solutions

FAST Global Solution's Towable Passenger Stairs include models for regional aircraft (62-96 inch sill height), narrow-body aircraft (86-134 inch sill height), wide body aircraft (132-160 inch sill height). Features Morton® non-slip surfaces; 12V timed lighting; ready-to-use towbar, movable by hand; moveable platform handrails; auto-locking deck stabilizer; hydraulic stair stabilizer; and optional canopy.

AviationPros.com/10026635



SIDE SHIFT CAB MODEL 269LC
R.J. Design LLC

This model of side shift cab includes side shift, flip up cable protection, leveling cab floor and the extend/retract passenger walk, that totally eliminates portable ramps.

AviationPros.com/12056164



PASSENGER STAIRS/SPECIALIZED CHASSIS
SCHOPF Maschinenbau GmbH

SCHOPF PS 560 A/B is based on a specially developed airport vehicle chassis to service aircraft with door sill heights between 1.9 and 5.8 meters, powered by a diesel engine with hydrostatic drive. Also available as VVIP/VIP version. Options include all-weather-canopy, sun roof, auto-leveling system, etc. SCHOPF stairs are in service at civil airports worldwide and with military forces in various countries.

AviationPros.com/10025049






Hydraulics International, Inc.
OXYGEN & NITROGEN BOOSTERS

INCREASE PROFITS
Gas Boosters provide up to
40% MORE FILLS

Primary use for filling or topping off...

Onboard Oxygen Bottles • Struts • Escape Chute
High Altitude Low Opening (HALO) • Life Rafts • Tires

Even if your source gas pressure drops below 300-PSI



2G SERIES
Electric Driven

- 5000-PSIG rated
- 15 SCFM discharge rate
- Quiet, only 60 dba
- No belts or pulleys
- 2-Stage and double acting configurations



5G SERIES
Air Driven

- 5000-PSIG rated
- 36 SCFM discharge rate
- Portable
- Single acting, double acting and 2-stage configurations



HIHPG1 SERIES
Air Driven

- Two (2) bottle hand truck
- Fits bottles 9.3" in diameter and 51" in height
- Accommodates single / double acting and 2-stage configurations
- Automatic shutoff safety valves

HYDRAULICS INTERNATIONAL, INC.
9201 Independence Ave., Chatsworth, CA 91311 USA
(Phone) 818.407.3400 | (Fax) 818.407.3428
www.hiigroup.com

HYD-3865.3 Made in the U.S.A.

AviationPros.com/10017435

► **PHOENIX AST-2P/X TRACTOR**
Goldhofer Aktiengesellschaft



The 4th generation of the AST-2 was designed from scratch on a blank sheet of paper for the next generation of aircraft tow tractors. Goldhofer and Schopf's proven hydrostatic drive system, now combined with a differential lock, offers a new level of maneuverability and – thanks to the ideal load distribution of the vehicle – best traction and high-class driving performance of Goldhofer aircraft tractors. Simple operator guidance provided by our new central touchscreen enables effortless and errorless handling of aircraft up to 352t. Sit down in our brand-new fully glazed cab and enjoy an amazing overview not only over the pick-up device but also over the whole AST-2P/X. Emission standard – just choose it. Handling – just do it. Reliable performance over the whole lifetime – rely on it.

AviationPros.com/12127409



► **DIESEL BAGGAGE TRACTOR**
NMC-Wollard Inc.

Model 40D tractor features a 59 hp, tier 4 Kubota diesel engine, hydrostatic transmission and a planetary reduction rear drive axle. The maneuverable tractor has a 60" wheelbase and develops 4,000 lbs. of drawbar pull. The cab-forward design and rear deck "visibility channel" complement hitch coupling. Unit features front and rear elliptical spring suspension for reduced operator fatigue. Model 40 is also available with AC electric power.

AviationPros.com/12065257



► **ALL-PURPOSE VEHICLE**
Lift-A-Loft Corporation

The Lift-A-Loft APV (All-Propose Vehicle) is designed to withstand the demands of a hectic ramp environment. The APV can be configured in several different versions, such as high speed tow, lavatory/potable water, maintenance lift, catering truck, crew van, ambulatory lift and many more applications.

AviationPros.com/10027483



► **HYBRID TRACTOR**
Harlan Global Manufacturing LLC

Harlan Global Manufacturing presents its cutting edge hybrid tractor. The Harlan Hybrid HTH is manufactured with modular components. This means the diesel engine can easily be replaced with LPG, CNG, fuel cell or any other emerging technology.

AviationPros.com/10026177



► **DOUGLAS AIRCRAFT TOWING TRACTORS**
Douglas Equipment Ltd.

A complete range of towbarless and conventional aircraft towing tractors for handling all aircraft up to and including the A380, offering airlines and ground handling companies significant opportunities to reduce their operational costs and improve their operational efficiency.

AviationPros.com/10026898



► **MANEUVERABLE TUGS**
Mototok America LLC

More Safety, More Space, More Revenue! 100 percent visual control around the aircraft. No knocks. No collisions. No towbars. And optimum use of limited space! Only Mototok aircraft tugs are capable of maneuvering a plane's nose a few millimeters away from a hangar wall and, above all, quickly and efficiently prepare all other aircraft or helicopters in the hangar for their next duties.

AviationPros.com/11706293



► **TRADITIONAL PUSHBACK TRACTORS**
TLD

TLD has been manufacturing GSE for more than 50 years. Manufacturing tractors capable of serving regional jet to super jumbo jets, TLD has a tractor to serve any market. Featuring a variety of different configurations and options, TLD can make a tractor that will thrive in even the most challenging ramp conditions.

AviationPros.com/10363123

► **SOFTCAPTURE CRADLE**
Tronair Inc.

Tronair's JP100SSC SOFTCAPTURE® TLTV is equipped with the SOFTCAPTURE® cradle that allows the tug operator to capture aircraft from the driver's seat without the use of straps on the strut or the nose landing gear.



AviationPros.com/11193210



► **PUSH BACK TRACTORS**
Aeroservicios USA Inc.

We carry different types of Push-Back Tractors for a wide variety of aircrafts. We recondition, (making them 100 % operational) or overhaul (adapting them to new 0.00 hours) from small units to the heavier ones. We also have various models of electric Lektro towbarless push backs. We ship worldwide.

AviationPros.com/12114800

► **JP100S - 100,000 LB CAPACITY**



Jetporter

The redesigned JP100S uses some of the

latest innovations in battery motive technology. Separately excited motors and regenerative braking give the JP100S better throttle control, lower power requirements, longer run time between charges and ease of operation. The new features make the JP100S **FIRST** in it's class!

AviationPros.com/12111176



► **MODEL 40E TOW TRACTOR**

NMC-Wollard Inc.

Compact, maneuverable 60 hp electric AC powered tow tractor features a lithium ion polymer battery system—pull capacity is 4,000 lbs at the drawbar. Rear drive axle is planetary reduction type for efficient torque multiplication in baggage, light cargo and small to medium aircraft moving/towing applications. Short 60-inch wheelbase provides maneuverability on busy tarmacs/ramps.

AviationPros.com/12106073

► **CT5G BAGGAGE TRACTOR**
Charlatte of America

The CT5G comes with a choice of two gas engines – either a Ford four-cylinder, 2.5-liter engine or a four-cylinder, 2.8-liter engine from Zenith Power Products LLC – or a Deutz diesel engine. A Paillard axle is in front and an AxleTech axle in back.

AviationPros.com/10818003



J&B Aviation
BAG CHUTE
P/N JB-1851

WE KNOW A TON ABOUT STEEL

MANUFACTURED BY METALWORKS
CONTACT BRUCE WARNE
PHONE: 916-849-7004
EMAIL: BRUCE@BKWGSE.COM

AviationPros.com/10017483

LEKTRO
Celebrating 70 Years of Innovation, 1945-2015

Models From 15,000 to 210,000 lbs.

- Electric • Towbarless • Certified
- Universal • Easy to Use
- Simple to Maintain • Rugged

www.LEKTRO.com
1-800-535-8767 1-503-861-2288
sales@lektro.com

AviationPros.com/10017652



AIRFIELD FOD SWEEPER
F.O.D. Control Corporation, The

Clean Foreign Object Debris (FOD) from runways and ramps with this compact, efficient, tow-behind, traction-driven, rotary-brush sweeper. It quickly and efficiently collects sand, rocks, metal parts, chipped concrete and other debris, depositing them into removable hoppers that each hold 40 to 60 lbs. New operators can familiarize themselves with it in a matter of minutes. Tows at speeds ranging from 3 to 30 mph.

AviationPros.com/12076498

DOCK SAFETY GATE
FabEnCo



FabEnCo has developed a dock gate that will be added to its full line of safety products. The OSHA-compliant gate provides fall protection from loading docks. Made of carbon steel with a safety yellow powder coat finish, the loading

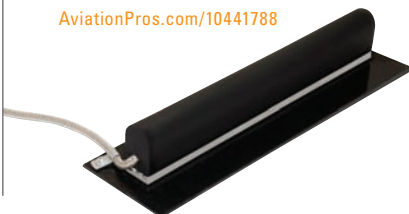
dock gate will initially be offered in two models, widths of 8 and 10 feet.

AviationPros.com/11690963

CONTACT DETECTION
Tapeswitch Corporation

Tapeswitch Corporation is the leading manufacturer of safety edges for contact detection applications and passenger boarding bridges.

AviationPros.com/10441788



WIRELESS HEADSETS

Eartec Company, The

The Eartec Company offers ComSTAR, a new generation of full duplex wireless headsets for aircraft maintenance crews that need instantaneous, hands-free voice communications. Enhances jobsite productivity and safety affording up to 16 users the ability to talk just like on a regular telephone within an 800-yard range.

AviationPros.com/11295532

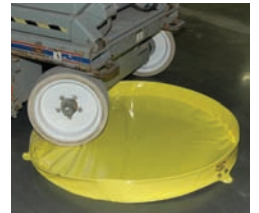


20-GALLON TANK TRAP

Andax Industries LLC

The 20-gallon Tank Trap™ is newest addition to the Andax line of portable containment pools. Engineered to be an affordable single-use option for emergency spills and leaks from vehicles with low ground clearance. Ready-to-use in 3 seconds – perfect for lift trucks, accidents and equipment leaks. The Tank Trap™ will contain up to 20 gallons. Drive right over the sidewalls and it immediately pops back up. Stored size is 16" x 18" x 7" and stows easily and is completely portable. Additional sizes available in 50, 100 and 150 gallons.

AviationPros.com/12104040



H9935 HEADSET FOR SERIES 9900 WIRELESS COMMUNICATION SYSTEM

David Clark Company Inc.

The H9935 headset is designed for use with David Clark Series 9900 Wireless Systems for ground support operations. The H9935 model features a new, M-2 microphone for clear speech clarity and high-profile ear domes for increased noise reduction. A new, over-molded flex boom assembly provides added durability in rugged ramp environments.

AviationPros.com/12114204



INTEGRATED GROUND SUPPORT HEADSET

Lynx Avionics Ltd.

An integrated headset and communication adapter providing simultaneous connections to an aircraft intercom, hand-held radio and cellphone. Uses standard interchangeable radio leads and telephone leads or a Bluetooth telephone connection.

AviationPros.com/10246017

WIRELESS GROUND SUPPORT

Flightcom Corporation

Flightcom supports hundreds of thousands of commercial and military flight crews and ground support personnel with communication systems that deliver clear communication, even under the most challenging circumstances. Its wireless ground support systems keep aviation and ground crews safe, effective and productive during aircraft ground pushback, marshalling, maintenance, and de-icing operations.

AviationPros.com/10441101





SAFETY CLOTHING
Transportation Safety Apparel

Transportation Safety Apparel provides workers with a variety of reflective safety products, safety apparel, and protective accessories, including ANSI-compliant, and high-visibility, fluorescent clothing.

AviationPros.com/10810973



SAFETY MARKERS
Plasticade

Plasticade manufactures a variety of safety cones, markers, and channelizers with or without retroreflective sheeting that are perfect for ground support applications.

AviationPros.com/12012967



SAFETY BUMPER CUSHIONS

Mantec Services Inc.

Mantec Services Inc., industrial grade Safety Bumpers are designed to help prevent costly aircraft damage and personal injuries. These tough bumpers feature UV and puncture resistance and are used by leading lift manufacturers and airline GSE groups nationwide. Easy to install and clean. USA Made.

AviationPros.com/12039112

Press for service

SOLUTIONS FOR GROUND SUPPORT EQUIPMENT

gs express

CONTACT US FOR:

- Equipment: New & Used
- Electronic Repairs
- Replacement Parts

SGS on line store
www.gsexp.com
 Cualquier asesoría en español

(305) 888 01 89
info@sgsequipment.com
www.sgsequipment.com

AviationPros.com/10017767

SUPPORT
from the ground up

Carts

- Baggage
- Lavatory
- Fuel Service
- Oxygen/Nitrogen
- Potable Water
- & Container Dollies

Par-Kan
 COMPANY
 Ground Support Systems

Call today for our complete support line

800-291-5487 www.par-kan.com
 Silver Lake, Indiana
gseales@par-kan.com

AviationPros.com/10017637

HEAVY DUTY UTILITY GATE
Dennis Evers Enterprise LLC

HUG, the heavy duty utility gate, can be used as a security access gate, roadblock, checkpoint and lot or road closure device. The American made HUG is capable of hundreds of full open and close cycles daily and is available as a mobile unit as a TUG (towable utility gate). With options like solar, intercom, radio control, key pad and key swipe, the gates add a new layer of security to any environment.



AviationPros.com/11475428



CLOUD-BASED GSE MONITORING
Access Control Group

AssetPro is a cloud hosted solution to monitor GSE fleets across your airport network. It monitors ramp agents, usage, abuse, location, fuel and provides alerts if exceptions occur. It runs on a Windows Embedded platform.

AviationPros.com/12012924

DRAINAGE SOLUTION
Safe Drain® Inc.

The patented Safe Drain provides 100 percent spill containment, sediment capture and hydrocarbon filtration for your facility 24/7/365. Custom fit to any storm drain, with quick, easy installation, no construction, no downtime. Safe Drain has been protecting the military and aviation industry and the environment for more than 20 years.



AviationPros.com/11459306

www.juniper-liverpool.com

Part no: JMP/CFM56/D/4777/C200. NSN: 1730-99-668-7936

The Juniper 2x25 gallon wash rig with accessory tooling for all engine types.

Times are tough. You need flexible, cost effective engine washing. You need Juniper.

Tel: +44(0)151 733 1553
 Email: gse@juniper-liverpool.com

AviationPros.com/10017984

Maximized reliability at the lowest possible total cost...

We can show you how.

Are you getting the most value out of your assets? Our customers face increased pressure to deliver great service with less financial resources.

Our Total MX Solution has reset the standard for MX service by lowering annual costs, extending asset life, and increasing in-service reliability.

We've *Raised the Bar*, and we're ready to show you that you can too.

Proprietary Predictive MX System
 Reduced out-of-service costs
 Extended asset life
 Lowest possible total cost

Raise the Bar.

www.globalaviationservices.com

AviationPros.com/10018172

SAFETY & COMMUNICATIONS

BUCKET PAC™ SPILL KIT

Andax Industries LLC

The new "color-coded" Bucket Pac™ spill kit is portable and includes an easy-to-open, screw-on lid making this kit completely water tight. It fits easily in your truck, outdoor equipment or in your maintenance shop and includes enough sorbent pads and Sorb Sox™ to contain a 10-gallon spill. Available in Oil-selective and Universal. If you need larger spill kits, check out of 30-gallon and 50-gallon Barrel Pacs™.



AviationPros.com/12112637

ALBERTH AVIATION

TOOLS & EQUIPMENT DESIGNED BY MECHANICS FOR MECHANICS

GROUND SUPPORT EQUIPMENT



GSE | Specialty Maintenance Tooling | Aircraft Parts

Manufacturer of GSE & Select Tooling
www.AlberthAviation.com • 832.934.0055

AviationPros.com/10016971



FINANCING & LEASING OF NEW & USED AIRCRAFT GROUND SUPPORT EQUIPMENT

SALES, RENTALS, PURCHASE, TRADE-INS & APPRAISALS

We are GSE experts with over 30 years of GSE experience. Let us work together on your next GSE requirement.

Contact Neil Bennett:
Phone: 253-358-0330 * Email: neil.bennett@somersetcapital.com
www.somersetgse.com

OAC, Terms & Conditions apply

AviationPros.com/10017127



SALES RENTALS LEASING FINANCE CONSULTING

AIRCRAFT TOW TRACTORS

TLD TMX-350-28 (61,000 lbs GVW)
TLD-TPX-200MT towbarless
TLD TMX-150-16 (35,000 lbs GVW)
JBT B250 (30,000 lbs GVW)

BAGGAGE TRACTORS

Tug MA50, gas

CONVEYORS

NMC-Wollard TC-888, diesel

GPU

TLD 90Kva, 120Kva & 140Kva
TLD 90Kva/28V dual output

HEATERS

Trilectron 5050D

AIR STARTS

TLD 200 PPM

PASSENGER STAIRS

Phoenix Metal PAS200 wide body
Clyde 15F2820 narrow body, towable
Stinar SPS-2513

LAVATORY TRUCK

Phoenix Metal TL 600, widebody

FOR SALE OR LEASE

AviationPros.com/10017302

Your GSE SHIPPING EXPERTS

714-377-5933
Sales@AirOceanPros.com
www.AirOceanPros.com

AviationPros.com/10018518

Mercury GSE
Ground Support Equipment

www.mercurygse.com

for current stock of air starts, bag tugs, beltloaders, bobtails, crew and passenger stairs, gpu's, loaders — main and lower deck, tow tractors and other items.

SALES LEASE RENTAL APPRAISAL

WE BUY SURPLUS GSE

PH: (562) 653-0654 FAX: (562) 653-0665
E-MAIL: dtaylor@mercurygse.com
12519 Cerise Ave., Hawthorne, CA 90250

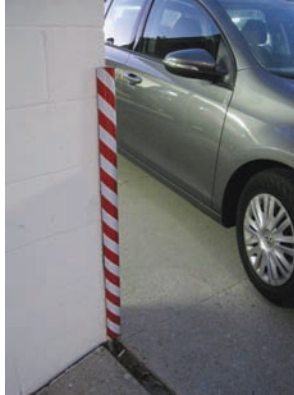
AviationPros.com/10017592

REFLECTIVE FOAM GUARDS

American Permalight Inc.

PERMALIGHT introduces reflective silver/red foamy cushioning Safety Corner and Flat Surface Guards in 39-inch length, for indoor and outdoor use. The two corner guard shapes and one flat surface guard shape are available with either self-adhesive backing or strong stainless-steel support to screw-attach the protectors to walls, protrusions, truck bays, loading docks, or parking area obstacles. The strong reflective effect bounces back vehicle headlights, flashlights, and searchlights to alert people in the vicinity.

AviationPros.com/12023328



SAFETY WAND HD

Safety Wand Corporation

Safety Wand HD in Orange, Yellow. On/Off or On/Off/ Flashing. When you need the best.

AviationPros.com/10976805



ICE TRACTION DEVICE

Andax Industries LLC

Winter weather is unpredictable enough without having to worry about walking from point A to point B and making it in one piece. YakTrax Ice Traction Device for your shoes is the answer. It stretches over any footwear from boots to jogging shoes and stays in place. A grid of 360-degree steel coils gives you traction on ice and snow with hundreds of edges gripping any slick, icy surface providing stability. Best of all, they are so comfortable, you won't even realize you are wearing them. Walk normally as you would on dry ground. Stay safe and upright with YakTrax.

AviationPros.com/12074356



REFLECTIVE THREE SEASON JACKET

Transportation Safety Apparel

Boost your visibility while keeping you warm and dry. Made of wind- and water-proof Oxford polyester with a 2,000-mm coating along with taped seams. Three pockets: Two outside zipper pockets and one inside chest pocket in lining. Colors: Lime or Royal. Lime color meets ANSI 107-2010 Class 3 standards. Sizes: S-5X.

AviationPros.com/10775959

NOISEBUSTER ACTIVE NOISE REDUCTION SAFETY EARMUFFS

Pro Tech Technologies Inc.

NoiseBuster Active Noise Reduction safety earmuff combines a high-performance passive earmuff with advanced Active Noise Reduction technology for comprehensive hearing protection available to industry today.

You have choice of configurations: PA4000 Over-the-Head, PA4100 Behind-the-Head, PA4200 Hard Hat/ Cap Mount.

AviationPros.com/10927583



AVRAMP

I.D. Systems Inc.

Managing a fleet of aircraft ground support, operations and handling vehicles in an airport creates many significant, proven benefits. I.D. Systems' patented vehicle management system, AvRamp™, helps you increase productivity, establish total visibility and accountability of vehicles and operators through vehicle access control, improved safety and security, and reduced maintenance and operating costs.

AviationPros.com/10184914



BEAM CLAMP FALL PROTECTION

Premier Fall Protection

Premier offers a series of beam clamps to provide a durable and safe fall protection anchorage during aircraft maintenance. Each offering a 5,000 lb. capacity with various beam width options and steel construction, the beam clamps provide convenience, safety, and portability.

AviationPros.com/11573958



DAVIN Inc.

**SALES, LEASING,
FINANCING**

631/499-6363

Fax: 631/499-4222

www.DavinGSE.com

AIR-CONDITIONERS

TLD ACE, Model 802-620, Mf'd 1991

AIRSTART

TRONAIR Model SA280G2 Stored Air Unit, Mf'd 2007

BAGGAGE CARTS

We have various baggage carts available! Call us for more information!

BELTLOADERS

TUG Model 660, Powered by a Perkins Diesel, Mf'd 1994 - 2 Available

TUG Model 660, Powered by a Ford Gas Motor, Mf'd 1988 - 2 Available

NMC-Wollard, Model TC-888-D, Cummins Diesel, Mf'd 2015
Wollard Model TC-886-D, Mf'd 1987, Perkins Diesel

CABIN SERVICE/CATERING TRUCK

Global CT 22-228, Mf'd 2000 ON LEASE

CONTAINER/PALLET LOADERS & TRANSPORTERS

FMC/JBT, Commander 151, Wide Loader ON LEASE

DEICERS

1999 FMC LMD 2000 Sterling, Diesel Chassis Enclosed Bucket, Air First (5 Available)

1998 FMC 2000 Sterling Diesel Chassis Open Bucket

FUEL TRUCKS/CARTS

Par-Kan Model FSC-550, 550 Gallon Capacity Diesel
Par-Kan Model FSC-550, 550 Gallon Capacity Gasoline

GENERATORS/GPUs

Hobart Model JetEx5D, Mf'd 2004 NEW LISTING!

Hobart Model 90J20P, Mf'd 1992 NEW LISTING!
Hobart Model 60CU24P5, Mf'd 2001

HEATERS

Cold Buster Mark I, Mf'd 1989

Air-A-Plane Model 5050GF, Mf'd 1994, Ford 300 Gas

HYDRAULIC TEST STAND

Hydraulic Mule Test Stand Model PH10E, Mf'd 1969 NEW LISTING!

LAVATORY TRUCKS/CARTS

Aero Specialties Model 100ASLC100E, Mf'd 2004 NEW LISTING!

Phoenix TL700, Mf'd 2009

STAIRS-PASSENGER

Lift A Loft Model AS228, Mf'd 2005

TRACTORS-AIRCRAFT

2014 JBT, Model B250, Perkins, Cab, 22,000 lb DBP.

2000 NMC-Wollard, M200MB4, Cummins, Cab.
1992 United SML-100, J. Deere diesel, low-profile.
1984 Grove MB2, Cummins, Cab 53,000 lb GVW.

TRACTORS - BAGGAGE & CARTS

Harlan HTAG-40 Ford 6 Cyl w/Cab TUG, Model MA-50, Ford 6 Cyl Gas Engine w/Cab
TUG, Model MA-60, Ford 6 Cyl Gas Engine
TUG, Model MA-30, Ford 6 Cyl Gas Engine
TUG, Model MA-40, 4 Cyl LPG Engine

Harlan, Model HTAZ-40, Cummins Diesel w/Cab
Toyota, Model TD25, Toyota Diesel Engine
Harlan, Model HTAG-80, Ford 300 Gas Engine w/Cab 2 Available!
Charllette, Model CT07, Battery Powered Tugger 2 Units Available
Harlan, Model HTAJ-50, Ford 2.3L Gas Engine
Harlan, Model HTAB-40, Cummins 4-Cylinder Diesel w/ Cab

WATER TRUCKS/CARTS

DAVCO, Model PWC30, Mf'd 1999

www.ShipEMR.com

920 Bond Street / Suite 208 / Bend, Oregon 97701
Toll free: 855.811.1080 / Local: 541.550.7158 / Fax: 541.550.7138

MC# 847359 | DOT# 2478260 | SCAC# EMRO



LAND • AIR • SEA

For all your transportation needs.

CONTACT: **Joey Mazzone**
GSE TRANSPORTATION SPECIALIST

TOLL FREE: 855.811.1080
Joey@ShipEMR.com



"Consider It Done."™



GROUND SUPPORT EQUIPMENT

832-934-0055 • www.AlberthAviation.com

JACKS 3 Ton to 100 Ton
B-1, B-2, B-4, and B-5 Work Stands,
Wheel & Brake Dollies, Tow Bars,
Maintenance Stands, Engine Stands, etc.
Overhauled, Reconditioned like New

**AIRCRAFT PARTS &
GROUND SUPPORT EQUIPMENT, INC.**
Tel: 305-871-2192
Fax: 305-871-6081
pdsge@bellsouth.net

**28 VOLT DC POWER CART
MSR-600-28**



CURRENT POWER

Phone: 203-994-8408 • Fax: 203-403-9543
Email: sales@currentpower.biz • www.currentpowerllc.com

Use us for your GSE needs



- Electronic Repair
- Equipment and Training
- Replacement Parts

(305) 888 01 89
(305) 851 81 44
Cualquier asesoría
también en español

GPU - ASU - ACU - LOADERS - ENGINES
BAGGAGE TRACTORS - BELT LOADERS
TRANSMISSIONS - RAMP ACCESSORIES
www.SGSequipment.com



QUALITY USED & REBUILT GSE

Current Equipment Available for Purchase or Lease

FMC TRUMP 2000II- Aircraft Deicer

Mounted on a Ford 700 Chassis, V-8 Gasoline Engine with Automatic Transmission, 4 Million BTU Heater.

- 1,400 Gal. Type I & 600 Gal. Type IV tanks.
- Good Operating Condition!



\$53,000

Ford F350- Super Duty Maintenance Lift

- 1998 Tesco Model 5020 Maintenance Lift
- 2,500lbs. deck capacity
- Unit has 5,500 miles
- 5,384 engine hours.



\$24,900

2008 NMC Wollard Pushback Tractor

A low profile, dual purpose, and low center of gravity tow tractor, ideal for corporate and regional jet applications. An 8,000 to 14,000 DBP tow tractor has proven itself in many corporate and regional jet applications.

- Ford 300, Gasoline Powered Engine
- Ford C-6, 2008 Model with ONLY 3,446 HOURS



\$32,999

Hobart GPU 60KVA

Hobart products are engineered to meet the growing requirements of the next generation airports and aircrafts. Low profile, combined with standard automotive-type steering, provide superior visibility and maneuverability in congested ramp areas.

- Specifications:
- Cummins Diesel Engine
- Trailer mounted with tow bar and park brake
- Power Cord and Aircraft plug
- Low oil pressure shutdown
- Electronic governing system



\$19,750

662-342-1412
WWW.GSSONLINE.COM



Ground Support Specialist

GSA Contract Number: GS-30F-038BA



▲ Editor - Alex Wendland
awendland@aviationpros.com
920-563-1644

The GSE Industry is Ready to Take Off

A September report from Consumer Market Research shows that the global ground handling market is going to grow to \$456.76 million by 2019, 31 percent growth. Get yourself in the game and stay competitive. Our annual November Industry Showcase makes it easy.

Energy is high following yet another fantastic inter airport Europe. The biannual German trade show brought 12,706 visitors from 110 countries to Munich and 676 exhibitors from 44 countries filled the booths, a 5.5 percent increase.

In last year's Industry Showcase we broke down three major trends we saw forming in the industry. I think that's a pretty good tradition to uphold, so what's happened since November 2014?

Cash Influx: Every earnings report that crosses my desk has the headline "Record Profits Reported for XYZ Co." In July of this year, VanDerLande Industries, Inc reported record fiscal year net sales of nearly \$1.1 billion. Air T, Inc. reported a 69 percent increase in consolidated net earnings for fiscal 2015. Saudi Ground Services succeeded with a different kind of sale by raising \$752 million in an IPO over the summer.

Aged Equipment: Last year, in this same issue, we talked about the old equipment in ground support and ground handling. Obviously that wasn't going to change in one year - and it hasn't. But we're getting there. When you look at the monetary gains made by airlines and manufacturers - and see customer satisfaction dragging in the dregs - it's time to update and add GSE to improve on-times.

Rising Innovation: Last month's inter airport Europe show was a hotbed for GSE innovation. The inter airport Europe Innovation Awards were given in four specialties (interTERMINAL, interDATA, interRAMP and interDESIGN). Two of those awards, interTERMINAL and interRAMP, were given to GSE-centric innovations. DSG BagDrop, from Denmark, won the interTERMINAL award for Air.Go 2.0, a baggage self-check solution and the United Kingdom's Midstream Lighting won the interRAMP award for their Titan LED Apron Projector. The Titan projector replaces high mast lighting on the ramp and reduces energy demand by 50 percent while increasing light on the ramp for night operations.

This directory is filled with innovative solutions and ways to improve your processes. We're ready for a new influx of ideas, and they're starting to make their way in through many of the products in our Showcase, but we can't grow if we don't support each other.

SOCIAL MEDIA & ONLINE CONTENT



FACEBOOK
facebook.com/
AviationPros



YOUTUBE
youtube.com/user/
AviationProsVideos



TWITTER
@aviation_pros



LINKEDIN
linkedin.com/groups/
AviationProscom

MEDIA CENTER



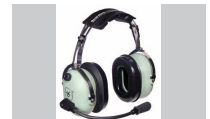
Introducing Undagrid
AviationPros.com/12110548

TOP ARTICLE



Miami-Dade Mayor Vetoes
Luggage-Wrap Rules at MIA
AviationPros.com/12127160

ONLINE PRODUCT GUIDE



H9935 Headset for
Series 9900 Wireless
Communication System
AviationPros.com/12114204

INTRODUCING A NEW



IN GSE PERFORMANCE

WE BUILD INNOVATIONS THAT WORK



- Aircraft Ground Power Cable Assemblies
- 400Hz Central System Power Equipment
- Pre-Conditioned Air Hoses, Connectors, Reels, and Trolleys
- Aircraft Cable Storage Devices and Crocodile Style 400 Hz Cable Carriers
- 400Hz Test Equipment
- Air Start, Lavatory and Potable Water Hoses and Fittings
- 28VDC , 270VDC Power Supplies and Transformer Rectifiers
- 400Hz Solid State and Motor Generator Equipment
- Passenger Boarding Bridge Baggage Chutes and Gate Park Systems



SEE WHY PAGE IS TURNING THE COMPETITION GREEN WITH ENVY!



Your CONDUIT to Performance.™

PAGE Industries, Inc.

www.pageindustries.com sales@pageindustries.com

1-707-469-PAGE (7243)

ENGINE DISTRIBUTORS INC.



YOUR Tier IV Solution

Reliable • Durable • Clean • Green

Engines That Are The Solution To Your Tier 4 Diesels.



5-YEAR,
5000 HOUR
WARRANTY
FOR THE
GSE MARKET



Ford Advanced Technology Engines.

Our line of LSI industrialized Ford engines are available and serviced through a Global Dealer Network.

Featuring a complete line of EPA and CARB Certified 1.6, 2.5, 3.7 and 6.8 L LSI Engines ranging from 20 to 200 hp. Available in Gasoline, LPG, CNG, Natural Gas and Dual Fuel. Secured Volumes, Longer Life Cycles, Dry Fuel and Flex Fuel Valve Trains – You Can Find It At EDI. Performance you can count on!

Engine Distributors Inc. 400 University Court • Blackwood, NJ 08012
Phone: (856) 228-7298 or (800) 220-2700 • www.edi-dist.com