

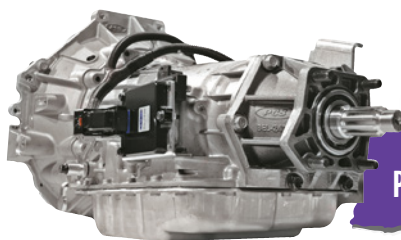
NOVEMBER 2017

# Ground Support

WORLDWIDE

EQUIPMENT – SERVICES – HANDLING

ITW GSE



PCS



UNITRON POWER SYSTEMS



EAGLE, A TRONAIR COMPANY



LAS-USA

PAR-KAN COMPANY



ENGINE DISTRIBUTORS INC.



PAGE INDUSTRIES



TEXTRON GSE



2017-2018

# INDUSTRY SHOWCASE



# Innovations That Work

PAGE, known as the industry leader in innovation and for bringing new products to market, has been listening to their customers to determine, design and introduce what the airline industry wants and needs. PAGE is committed to advancing the work environment in the GSE industry.

## 400HZ SINGLE JACKET POWER CABLES

Simply the most advanced, safest, and robust cable available in the industry today. Available in a vast array of lengths and configurations with features such as:

- ◆ **Molded on connector with internal reinforced strain relief.**
- ◆ **Optional Plug & Play modular switch assemblies for a variety of remote applications.**
- ◆ **Redundant safety protection to sense high temperatures and the loss of the neutral conductor.**
- ◆ **The only integrally molded nose plug with our rugged protective tip. No dangerous floating contacts!**



## JET BRIDGE BAGGAGE CHUTE



**P6000** Baggage Chute utilizes modern manufacturing techniques for the sturdiest and safest method to transfer luggage from the jet bridge to the tarmac. Innovations include:

- ◆ **Robust design with easy installation.**
- ◆ **Optional service platform for holding chocks, cones, wands, and F.O.D. bin.**

## 8" PRE-CONDITIONED AIR CONNECTOR



**PCA610** is the premier PCAir Connector in the market today incorporating:

- ◆ **Built in swivel.**
- ◆ **"High flow" screen.**
- ◆ **The industry's best and longest lasting snap-in gasket.**

**PAGE Industries, Your Conduit to Performance**



SouthComm  
Business Media  
PO Box 803 • 1233 Janesville Ave  
Fort Atkinson WI 53538  
920-563-6388 • 800-547-7377  
Vol. 25, No. 9

#### Editor

**Josh Smith**  
920.563.1644 ▶ jsmith@AviationPros.com

#### Publisher/Sales

**Missy Zingsheim**  
920.563.1665 ▶ missy@AviationPros.com

#### Advertising

**Michelle Kohn**  
224.324.8529 ▶ michelle@AviationPros.com

#### International Sales Manager

**Stephanie Painter**  
+44 1634 829386 ▶ fax +44 1634 281504  
Stephanie@painter-lowe.com

#### List Rental

**Elizabeth Jackson**  
847.492.1350 ext. 18 ▶ ejackson@meritdirect.com

#### PRODUCTION & CIRCULATION

##### Art Director

**Rhonda Cousin**

##### Production Manager

**Carmen Seeber**  
920.568.8373 ▶ carmen.seeber@AviationPros.com

##### Audience Development Manager

**Debbie Dumke**  
920.568.1763 ▶ ddumke@southcomm.com

##### Production Director

**Steve Swick**

#### INTERNATIONAL AIRPORT GSE EXPO

##### Trade Show Director

**Sue Ralston**  
920.563.1655 ▶ sue@AviationPros.com

#### AVIATIONPROS GROUP

**Gloria Cosby** ▶ Executive Vice President

**Gerry Whitty** ▶ VP, Marketing

**Lester Craft** ▶ Director of Digital  
Business Development

#### SOUTHCOMM BUSINESS MEDIA

**Bob Mahoney** ▶ CFO

**Blair Johnson** ▶ COO

**Eric Kammerzell** ▶ VP, Technology

**Curt Pordes** ▶ VP, Production Operations

Subscription Customer Service  
877-392-9187, 847-539-7598  
Circ.groundsupportww@southcomm.com  
PO Box 3257 Northbrook, IL 60065-3257

Ground Support Worldwide (USPS 0015-386), (ISSN 1934-2861 print; ISSN 2150-4016 online) is published 10 times per year in February, March, April, May, June/July, August, September, October, November and December/January by SouthComm Business Media, LLC, 1233 Janesville Ave, Fort Atkinson, WI 53538. Periodicals postage paid at Fort Atkinson, WI 53538 and additional mailing offices. POSTMASTER: Send address changes to Ground Support Worldwide, PO Box 3257, Northbrook, IL 60065-3257. Canada Post PM40612608. Return undeliverable Canadian addresses to: Ground Support Worldwide PO Box 25542, London, ON N6C 6B2.

Subscriptions: Individual print and digital subscriptions are available without charge to qualified subscribers worldwide. Please visit [www.aviationpros.com](http://www.aviationpros.com) and click on "Subscribe".

Publisher reserves the right to reject non-qualified subscriptions. Subscription prices: U.S. \$46 per year, \$88 two year; Canada/Mexico \$67 per year, \$124 two year; All other countries \$98 per year, \$185 two year. All subscriptions payable in U.S. funds, drawn on U.S. bank. Canadian GST#R42773848. Back issue \$10 prepaid, if available. Printed in the USA. Copyright 2017 SouthComm Business Media, LLC.

All rights reserved. No part of this publication may be reproduced or transmitted in any form or by any means, electronic or mechanical, including photocopy, recordings or any information storage or retrieval system, without permission from the publisher.

SouthComm Business Media, LLC does not assume and hereby disclaims any liability to any person or company for any loss or damage caused by errors or omissions in the material herein, regardless of whether such errors result from negligence, accident or any other cause whatsoever. The views and opinions in the articles herein are not to be taken as official expressions of the publishers, unless so stated. The publishers do not warrant, either expressly or by implication, the factual accuracy of the articles herein, nor do they so warrant any views or opinions offered by the authors of said articles.

## 06 Cargo and Baggage Handling Equipment and Accessories

## 14 Catering and Cleaning Equipment

## 16 Deicing and Anti-icing

## 20 Fueling and Fueling Equipment

## 26 GPUs, Air Starts, PCAs and GSE Parts/Components

## 30 Green Products

## 32 Ground Handlers and Service Providers

## 36 Lav and Potable Water Carts

## 38 Maintenance Services and Shop Equipment

## 42 Passenger Stairs/Lifts and Boarding Bridges

## 44 Pushbacks, Tractors and Utility Vehicles

## 48 Safety and Communications

### ▶ DEPARTMENTS

## 04 Editor's Note

SOCIAL MEDIA &  
ONLINE CONTENT

AVIATIONPROS  
Print | Digital | Online | Live Events  
AviationPros.com



FACEBOOK  
[facebook.com/  
AviationPros](https://facebook.com/AviationPros)



TWITTER  
[@aviation\\_pros](https://twitter.com/aviation_pros)



YOUTUBE  
[youtube.com/c/  
AviationPros](https://youtube.com/c/AviationPros)



▲ Editor - Josh Smith  
 jsmith@aviationpros.com  
 920-563-1644

# GSE Technology Continues to Evolve

Autonomous technology is changing the way we look at ground support equipment.

Welcome to *Ground Support Worldwide's* annual Product and Service Showcase. In the following pages, you'll find a plethora of ground handling services and cutting edge ground support equipment, much of which was recently showcased at inter airport Europe 2017 in Munich, Germany.

As expected, the biennial show featured a tremendous amount of innovation focused on shaping the GSE industry. One feature that drastically stood out was the presence of autonomous equipment.

While self-driving vehicles may seem like a futuristic vision, the fact is, this technology is here now.

TLD and EasyMile demonstrated their self-driving tractor known as TractEasy. MULAG is testing a prototype of its self-propelled Comet 4E Autodrive vehicle. Timsan showcased a self-propelled ambulance, and Mallaghan had autonomous passenger stairs on display. What's more, Vanderlande won

an Innovation Award for their autonomous baggage handling system, FLEET, which utilizes automated guide vehicles. And these examples just scratch the surface of how this technology can be applied to ground support.

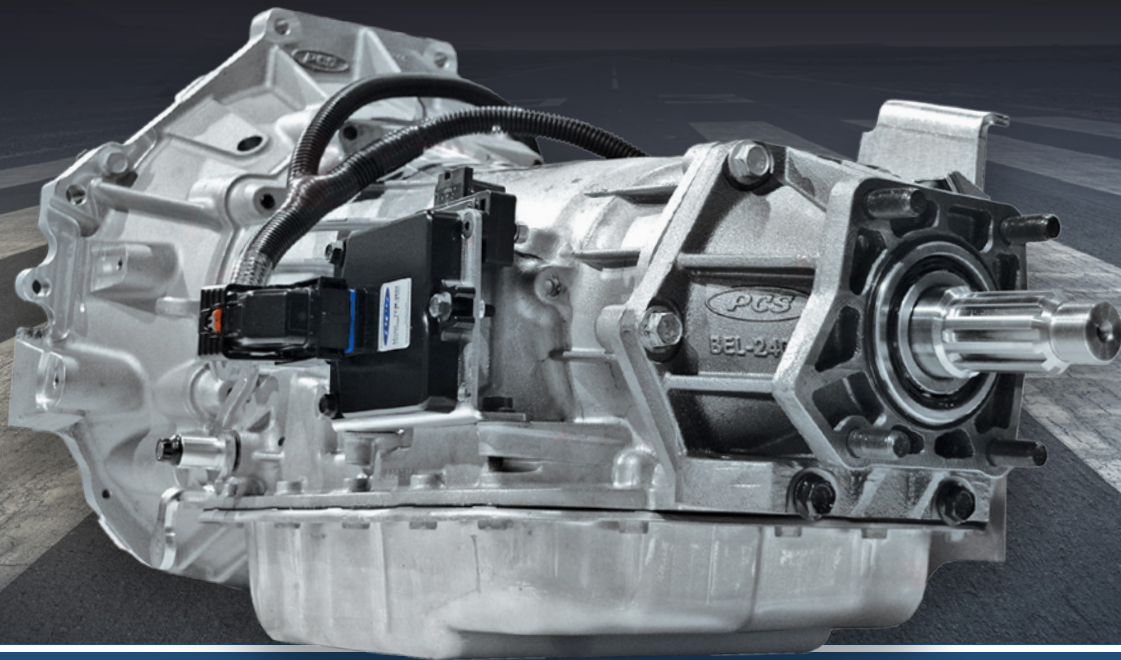
Whether autonomous GSE is a fit for your current operation or not, the emerging technology serves as a great reminder to be prepared for the future. Autonomous equipment is here, and more advanced technology will continue to be developed.

## ▶ Advertiser's Index

A T Juniper.....	51	Global Ground Support.....	29	Reelcraft.....	49
AERO Specialties .....	35	Ground Support Specialist.....	38	Rotorcraft .....	34
Aeroservicios.....	53	GTC North America .....	24	Safety Systems & Controls.....	54
Air Ocean Pros.....	53	Harlan.....	41	Servicore .....	50
Albany Airport Authority .....	53	Hydraulics Intl .....	48	SkyMark Refuelers.....	19
Alberth Aviation .....	54	ITW GSE.....	9	Textron GSE.....	7
Anderson Airmotive Products Co., Inc. ....	50	Liquid Automation Systems USA .....	17	Timsan.....	28
Charlotte America .....	25	Lektro.....	51	Total Control Systems .....	46
Columbus Jack.....	43	Mantec .....	54	Trinity Highway Rentals .....	22
CV International .....	52	Mercury GSE .....	53	Tronair .....	13
David Clark Company .....	15	Myslik, Inc. ....	39	U.S. Airmotive GSE .....	37
Davin Inc.....	54	Page Industries.....	2	Unitron Power Systems.....	11
Engine Distributors.....	56	Par-Kan .....	21	Verde GSE .....	40
Flightcom Corporation.....	23	Phoenix Metal Products.....	45	Wanco .....	53
FluidTran Inc. ....	54	Powertrain Control Solutions, LLC.....	5	Xcēd Aviation .....	31
Fortbrand Services Inc.....	54	ProFlo Industries LLC.....	27		

# YOUR TRANSMISSION SOLUTION.

At the core of every PCS 4LHD transmission is a 100% factory new GM 4-speed transmission. All transmissions feature the patented PCS Abuse Protection System (APS) valve body which solves many common industry issues.



## **SAFE GEAR ENGAGEMENT**

Full programmability of gear engagement conditions so the vehicle will only engage forward or reverse when it is safe. Safe input conditions include brake applied, idle RPM, vehicle stopped, and more. No more abusive maneuvers!



## **C6 PACKAGING**

No need to redesign adapter plates, cross members, or driveshafts to install this technology into an older vehicle. Drop-in C6 packaging allows installation of the new transmission exactly where a C6 was installed. Same bellhousing, same output shaft, same overall length.



## **ELECTRONIC SHIFT**

No shift cable needed! Eliminate shift cable headaches caused from poor adjustment, cable wear, or ice. The PCS 4LHD can be shifted into forward and reverse with electronic signals instead of a shift cable.

*PCS provides complete solutions and can provide custom packages based on your needs including digital dash, electronic shifter, and more. Remanufactured transmissions are available for applications when a new transmission is not required.*



**MOVING YOU FORWARD**

+1 (804) 227-3023  
[www.powertraincontrol.com](http://www.powertraincontrol.com)  
[gseales@powertraincontrol.com](mailto:gseales@powertraincontrol.com)

## ▶ ROLLERTRACK

### Power Stow Americas, Inc.

The Power Stow Rollertrack systems allow customers to unload and load narrow body aircraft 30 percent faster while placing only one baggage handler in the hold, eliminating the door man. For customers who utilize aircraft based loading systems to achieve this labor reduction, the company can offer a ground based solution that allows the removal of the heavy onboard system.



[AviationPros.com/12375044](http://AviationPros.com/12375044)

## ▶ WALK-BEHIND BELT LOADER

### FAST Global Solutions

FAST Global Solutions offers a walk-behind belt loader that features easy, safe operation at a fraction of the cost of drivable belt loaders. FAST eliminated the drive components to increase the unit's longevity, lower maintenance requirements and reduce costs for air travel and cargo handling industries. It increases safety and lessens liability because its stable, low profile minimizes the chance of tipping, and the brakes engage automatically when the operator releases the tiller handle.

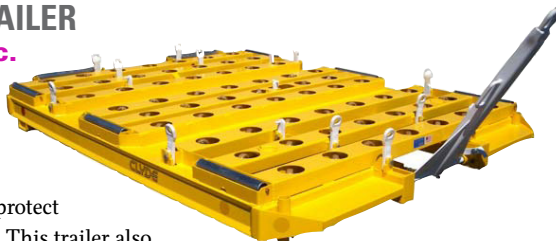


[AviationPros.com/12136993](http://AviationPros.com/12136993)

## ▶ CARGO PALLET TRAILER

### Clyde Machines Inc.

The Caster Bed Cargo Pallet Trailer offers protected lead on rollers and casters mounted in recessed cross members. Tine way pockets protect casters from forklift damage. This trailer also has towbar actuated self-adjusting brakes and recessed sides to protect customer markings.



[AviationPros.com/12377458](http://AviationPros.com/12377458)

## ▶ BAGGAGE CART CURTAINS

### QUADRO Corp.

Quadro Corporation is a supplier of closures to the OEM airline trailer manufacturers. The company offers a quality product with the exact fit to minimize downtime and maintenance costs.



[AviationPros.com/12377696](http://AviationPros.com/12377696)



## ▶ SHERPA BAGGAGE AND CARGO TOW TRACTORS

### Goldhofer Aktiengesellschaft

The Goldhofer Sherpa Baggage and Cargo Tow Tractors are based on a compact and modular vehicle concept. The Sherpa range of tractors enables users to find the tow tractor for individual requirements – depending on drive train, engine power, ballasting, cabin form and exhaust class. Additionally, there are many options for operators' comfort. The narrow body is stable and offers an easily accessible cabin with a good view. The Sherpa is available in three different diesel engine versions, as well as the fully electric Sherpa E, which features a maintenance-free lithium battery.

[AviationPros.com/12376663](http://AviationPros.com/12376663)



## ▶ P6000 BAGGAGE CHUTE

### Page Industries

Page offers the P6000 Baggage Chute, which utilizes modern manufacturing techniques making it easy to install. The P6000SP Service Platform can be mounted to any baggage chute for easy and safe storage of chocks, safety cones and wands, and it includes a secure FOD bin.

[AviationPros.com/12356988](http://AviationPros.com/12356988)

TUG



PREMIER



SAFEAERO



DOUGLAS



**INTRODUCING DECADES OF AVIATION EXPERIENCE.**

Every Textron GSE vehicle is backed by the expertise and resources of Textron—a Fortune 250 company with a long history of global aviation leadership. Building on this strong foundation, we deliver a full line of industry-leading vehicles and dedicated support to airports around the world.

Learn about our full line at [TextronGSE.com](http://TextronGSE.com).

**TEXTRON** **GSE**

GROUND SUPPORT EQUIPMENT  
*Pushing Forward*

© 2017 TUG Technologies Corporation. All rights reserved.



## ▶ TRACTEASY TLD

TractEasy is a driverless baggage tractor incorporating software that allows the robotized unit to operate in a complex and live ramp environment. This complete solution integrates the ramp operation organization, the safety parameters of the unit on the ramp, the navigational software to optimize routes as well as the vital security layers to ensure protection against outside interference. TractEasy will be based on TLD's electric tractor JET-16 and will integrate all remote control, communication and safety detection tools developed by EasyMile as part of their driverless technology.

[AviationPros.com/12376115](http://AviationPros.com/12376115)



## ▶ TBC 6000 TOWABLE BELT CONVEYOR Timsan

The Timsan TBC 6000 Towable Belt Conveyor offers a tow-bar, provided by a fifth wheel system mounted to the chassis for easy steering and a brake system that is applied when tow-bar is upright and released position. The belt forward/reverse movements are provided by hydraulic motor and the height and angle adjustment are provided by hydraulic cylinders. The electrical system is powered by a standard battery of 12 V DC.

[AviationPros.com/12378781](http://AviationPros.com/12378781)

## ▶ BAGGAGE BUMPERS

### American Permalight Inc.

Permalight foamy cushioned safety bumper guards are made of durable, recyclable polyurethane foam and are easy to install on conveyor belts, racks, shelves, columns, protrusions and sharp corners. They help prevent employee injury from bumping into obstacles and avoid costly equipment damages. The alerting bright yellow-black foam bumpers are 39-inch standard length with a few shapes also available in 16-foot rolls.

[AviationPros.com/12044048](http://AviationPros.com/12044048)



## ▶ CASTERS FOR AIR CARGO APPLICATIONS

### RWM Casters

The aerospace industry is a fast paced high efficiency field where material handling and product movement is key. With applications ranging from luggage distribution to aircraft construction, maintenance and repair, it is important to select the right casters and wheels to keep things moving efficiently, while minimizing down time. RWM Casters can help select the ideal caster, wheel or material handling product tailored to a customer's air cargo and aerospace design and manufacturing applications.

[AviationPros.com/12335736](http://AviationPros.com/12335736)



## ▶ ULD EXPLAINED ULD CARE

ULD Explained provides simple, jargon-free explanations with comprehensive illustrations covering the basics of ULD operations and handling. The ambition of ULD Explained is to fill a shortage of basic, easy-to-read and easy-to-understand ULD material for those who are new to ULD or those who are working with or around ULD but have never had the benefit of formal instruction.

[AviationPros.com/12339542](http://AviationPros.com/12339542)



## ▶ BAGGAGE CART ROTISSERIE

### Merrick Machine

The Baggage Cart Rotisserie, part of the Merrick Originals line, offers the ability to rotate the cart safely and easily to a comfortable work position, making repairs easier and faster. Merrick Machine is fourth-generation family-owned and operated and has been serving the Aviation, Industrial and Automotive industries since 1959. The Baggage Cart Rotisserie is manufactured at company headquarters in Alda, Nebraska. The company also manufacture a line of tarmac dollies for airplanes and helicopters.

[AviationPros.com/12261029](http://AviationPros.com/12261029)







Supplying ground power units,  
pre-conditioned air units and accessories  
to customers around the world

# SIMPLY SMARTER GROUND SUPPORT

- Modular design
- Smart solutions
- Reliable products
- Identical components

The future is here.

Find out more at [itwgse.com](http://itwgse.com).



AXA POWER HOBART HOUCHIN J&B AVIATION MILITARY

It's all about connections

## HDBT-1-3/16 CS/SS YZ IR/WW

### Hudson Bearings

These bearings offers a 850-lb load capacity, heavy duty air cargo ball transfer, carbon steel housing, stainless steel inner race, main and support balls.

[AviationPros.com/12377451](http://AviationPros.com/12377451)



## MODEL 100 CARGO TRACTOR

### NMC-Wollard Inc.

The NMC-Wollard Model 100 Cargo Tractor has 8,000 to 12,000 lbs. DBP ratings. The M100 tow tractor features a heavy-duty planetary reduction drive axle, front and rear spring suspension, dual drive wheels, automatic transmission, power-assisted four-wheel disk brakes, power steering, back-up alarm and engine safety shutdown. A unibody 3/4" plate steel frame and bumper are standard design features. Power options include gas, diesel, LPG or CNG. NMC-Wollard specializes in tow tractor customization with many factory installed options available.

[AviationPros.com/12358536](http://AviationPros.com/12358536)

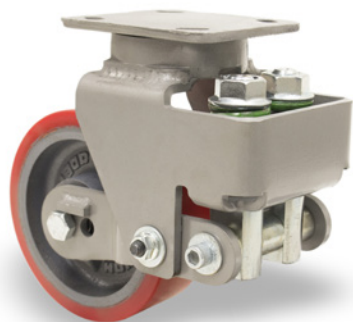


## BAG LIFT

### Austral Star LLC

The Bag Lift provides a solution for passenger gate congestion caused by over-sized carry-on bags. It can be mounted to a PBB rotunda, walkway or into the terminal. The integral bag cart is loaded by passengers at terminal level and then unloaded by workers on the ramp.

[AviationPros.com/11486725](http://AviationPros.com/11486725)



## SHOCK ABSORBING CASTERS

### Hamilton Caster & Mfg. Co.

Hamilton Caster offers a line of shock absorbing casters designed for aerospace industry. The spring-loaded casters feature Hamilton's newest Spinfinity maintenance-free swivel construction and a unibody spring housing. The AE Series casters reduce noise, protect cargo and extend caster, wheel and bearing life. They also are well suited for those heavy duty material handling challenges that require extra care. Hamilton's Spinfinity maintenance-free kingpinless platform offers a top plate and inner raceway of forged steel.

[AviationPros.com/12357764](http://AviationPros.com/12357764)



## NOVA BAGGAGE LIFT

### Airport Automation

The NOVA Baggage Lift is a bridge-mounted vertical conveyor for moving heavy loads up to 500 pounds to and from the passenger boarding bridge.

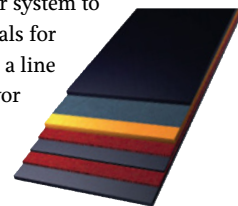
[AviationPros.com/12377732](http://AviationPros.com/12377732)

## CONTIFLEX VULKAN CONVEYOR BELTING

### Continental ContiTech

Continental has introduced a newly developed modular system to control hot materials for ContiFlex Vulkan, a line of Heritage conveyor belting for heat applications. The modular system offers a wide range of construction options, including an exclusive heat control isolation layer as well as either glass fiber (GF) or basalt fiber (BF) layers for burn through protection. The belts are available in widths up to 126 inches with a broad portfolio of belt constructions. Tensile strengths range from 220piw to 2,000piw and cover thickness can be selected to match given applications.

[AviationPros.com/12259373](http://AviationPros.com/12259373)





## JOIN THE UNITRON GPU USERS FAMILY

20kVA - 400kVA and Cable Handling Solutions  
400Hz, 28VDC, 270VDC, and Combo Ground Power Units  
State-of-the-Art IGBT & PWM Technology  
UL 1012, CSA, and CE Mark Certified  
Mobile, Towable, Fixed, and Bridge-Mounted Installations



Tel: +1-214-340-8600 or  
+1-800-527-1279  
Fax: +1-214-341-2099

Service: +1-214-343-7597  
Sales@UnitronLP.com  
www.UnitronLP.com

## FLEET

### Vanderlande Industries, Inc.

Vanderlande's FLEET is a flexible logistics solution. By utilizing intelligent automated guided vehicle (AGV) technology, FLEET replaces the need for fixed conveyors and sorting systems. Each individual vehicle within the fleet carries a single bag and determines the most optimal route through an airport. In addition, a vehicle can be given priority, which helps to safeguard the delivery of bags on time.



[AviationPros.com/12378365](http://AviationPros.com/12378365)



### ZH5 HYBRID TRACTOR SCHOPF Maschinenbau GmbH

The Schopf ZH5 hybrid tractor achieves the often required speed of 30km/h even with heavy loads. This is important for coping with the increasingly shorter turnaround times of the airlines and also ensures that the tractors do not become an obstacle on the driveways, consequently saving time and money. In addition to maintenance and operation-specific changes, a measure to reduce fuel consumption was implemented for the ZH5. In maximum operation, at maximum engine power, the engine reduces the speed to a level that maintains the current driving state.

[AviationPros.com/12289271](http://AviationPros.com/12289271)



### FR 700 RIPSTOP BAG CART CURTAINS

#### Estex Manufacturing Co. Inc.

Two times the durability of traditional bag cart curtains increases the life of Estex Manufacturing's FR700 Ripstop curtains, while decreasing the repair/replacement expense and labor cost. The unique nature of a brand new new material prevents punctures from spreading and provides handlers the opportunity to repair the curtain puncture as opposed to being replaced like traditional curtains.

[AviationPros.com/12242564](http://AviationPros.com/12242564)



### TOWABLE BELT LOADER Flight GSE Ltd.

This belt loader was designed for use on the South Pacific and features dual-drive rollers and a 12hp twin-cylinder water-cooled diesel engine.

[AviationPros.com/12340060](http://AviationPros.com/12340060)



### BAGGAGE UNLOADER BEUMER Group

The Baggage Unloader from BEUMER Group transfers bags from a container onto a conveying line in the airport, allowing operators to slide bags onto the conveyor rather than lift them. This technique reduces the risks of operator injury and damage to baggage and enables faster, more efficient unloading of unit load devices (ULDs).

[AviationPros.com/12125683](http://AviationPros.com/12125683)



### CONVEYOR BAGGAGE TRANSPORT SYSTEM R.J. Design LLC

This conveyor is used to load and unload luggage from aircraft, promoting safety for ground personnel using less persons, and it's faster thus saving time and money.

[AviationPros.com/12377764](http://AviationPros.com/12377764)

# ALL VARIATIONS, ANY WEATHER CONDITION

## THE EAGLE XM SERIES

Moving all variations of 737 and A320 aircraft



**The Eagle XM Series is the newest product offering superior functionality to the majority of commercial carriers worldwide.** This Four Wheel Drive workhorse features the latest Tier 4 Final Cummins diesel engine and is CE compliant for Europe. Backed by an industry leading 3 year 3,000 hour warranty and built in the USA, Eagle offers unparalleled factory direct service and support. For more information or to request a quote, please visit [eagletugs.com](http://eagletugs.com)

Eagle Tugs is a proud member of the Tronair family of companies, an integrated GSE manufacturer.

**TRONAIR**<sup>®</sup>



## ▶ 'ECAT' CATERING TRUCK DOLL Fahrzeugbau AG

The ecats are powered by emission-free electric engines whose energy is supplied by high-performance batteries, which can be charged anytime at the ramp. In this way, CO<sub>2</sub> emissions are reduced to zero and the energy consumption as well as noise pollution decrease considerably. Furthermore, a more efficient energy carrier and low motor maintenance requirements contribute to lowering operating costs and to increasing the vehicle's efficiency. The driving innovation is completed by a novel intelligent driving assistance which is characterized by warning and safety systems minimizing downtime as well as maintenance costs. The ecats were realized in close cooperation with the DOLL partners Gate Gourmet, a subsidiary of gategourmet, and German E-Cars.

[AviationPros.com/11245336](http://AviationPros.com/11245336)



## ▶ ENGINE WASH SYSTEM Aero Jet Wash, LLC

The AJW-114B comprehensive engine wash system, offered by Aero Jet Wash, can be towed in and around an airport. A step-up option, the AJW-115, is also available to customers.

[AviationPros.com/10817474](http://AviationPros.com/10817474)

## ▶ MH 10X12 HIGH-LIFT Smith Transportation Equipment

The STE MH 10x12 High-Lift is capable of servicing door sill heights ranging from approximately 55 to 100 inches. Mounted on either a gas or diesel chassis, this vehicle's 12-foot van body, and smaller footprint makes it an ideal choice in areas where ramp space may be tight.



[AviationPros.com/12376446](http://AviationPros.com/12376446)



## CMC-4000 TOWABLE TRASH CART Par-Kan Company

The Par-Kan CMC-4000 Towable Trash Cart is ideal for collecting bags of trash at the airport as well as quarantining trash from flights prior to inspection. The cart features three large hinged lids and a sloped stainless steel leak proof floor with drain valve to clean out any liquids.

[AviationPros.com/12375307](http://AviationPros.com/12375307)

## ▶ WASHING TROLLEY Nandan GSE Pvt. Ltd.

Nandan's Washing Trolley is specially designed for carrying out the cleaning and maintenance of the aircraft and auxiliary equipment across the airport. The washing trolley has a 1,000-liter capacity tank and is fitted with a pump to generate a high pressure spray for cleaning purposes. With an option of providing the power through an electric motor or engine available, the cart is ergonomic in design and is easy to operate and maintain.



[AviationPros.com/12216252](http://AviationPros.com/12216252)

## BRUSHES AND SQUEEGEE BLADES Cardinal Brush Corp.



Cardinal Brush manufactures OEM quality replacement brushes and squeegee blades for cleaning equipment such as

Tennant, Advance, PowerBoss, Factory Cat and many others.

[AviationPros.com/12259380](http://AviationPros.com/12259380)



## CATERING/CABIN SERVICE TRUCKS Global Ground Support

Catering/Cabin Service Trucks are available in 28-foot wide body, 22-foot wide body, 16-foot narrow body and 14-foot narrow body sizes. RJ 1/2 cab service is also available.

[AviationPros.com/10026400](http://AviationPros.com/10026400)

## ENGINE COMPRESSOR WASH RIG A.T. Juniper (Liverpool), Ltd.

The 2x25 gallon engine compressor washing rig is the mainstay



of the Juniper range. Versatile enough to tackle most engines when partnered with our growing list of wash probes, lances and spray rings, yet manoeuvrable enough for the most remote areas of an airfield.

[AviationPros.com/10027072](http://AviationPros.com/10027072)

## CATERING TRUCK Stinar Corporation

Stinar Corporation offers its HLCA-722 Catering Truck that services aircraft from 98 to 228 inches and features a 22-foot van body; four vertical stabilizers; front and rear roll-up doors; aluminum diamond plate floor; and many options available including refrigeration.

[AviationPros.com/10024780](http://AviationPros.com/10024780)



It's below zero degrees, wind is howling, spray is blinding, fingers frozen.

How's your deicing communication?

Contact David Clark for rugged, reliable communication solutions in the most demanding deicing environments. You'll save time, valuable fluids and enhance the overall efficiency and safety of your deicing and anti-icing operations.

Call **800-298-6235** (508-751-5800 Outside the USA) or visit **[www.davidclark.com](http://www.davidclark.com)** for more information.



[WWW.DAVIDCLARK.COM](http://WWW.DAVIDCLARK.COM)



An Employee Owned American Company

© 2017 David Clark Company Incorporated  
© Green headset domes are a David Clark registered trademark.

[AviationPros.com/10017163](http://AviationPros.com/10017163)



## TKS FLUID CART Alberth Aviation

Alberth Aviation designed this cart for clean transfer of TKS deice fluid from holding tanks and drums to the aircraft. It includes all hoses, 12-volt battery and charger, 4.5 gpm pump and 30-gallon tank.

[AviationPros.com/12012896](http://AviationPros.com/12012896)



## DEICING NOZZLES US Airmotive GSE

U.S. Airmotive GSE is proud to be a distributor of deicing nozzles manufactured by Task Force Tips. A single nozzle can be used in two steps to both deice and anti-ice aircraft. The operator simply selects the desired fluid delivery system pressure, and the nozzle responds automatically.

[AviationPros.com/10724697](http://AviationPros.com/10724697)

## HEADSET COMMUNICATION SYSTEMS FOR DEICING Flightcom Corporation

Wireless headset communication system for deicing operations keeps the driver and sprayer in constant two-way voice communication. The system offers superior audio quality, and has been proven in wide deployment.



[AviationPros.com/12377769](http://AviationPros.com/12377769)

## WING ARMOR ANTI-ICING SYSTEM Leading Edge Deicing Specialists

The Wing Armor anti-icing system tracks the amount of fluid dispensed to prevent over-spray. Two digital meters on the unit measure the anti-icing fluid sprayed from each gun. The pressurized system applies fluid with dual application guns with dual meters, ensuring even application on both wings and allowing crews to spray both wings simultaneously.

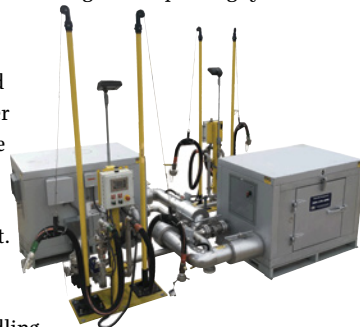
[AviationPros.com/12081513](http://AviationPros.com/12081513)



## DEICECUBE GLYCOL MIXING AND DISPENSING SYSTEM Liquid Automation Systems (LAS-USA)

The LAS DeiceCube glycol mixing and dispensing system provides user friendly, reliable, accurate and fast mixing of glycol and water to meet all weather conditions. It can reduce glycol usage, costs and environmental impact and improve throughput. It eliminates tripping hazards and reduces operator burden of handling heavy hoses on slippery ground and enables simultaneous loading of Type I and Type IV fluids.

[AviationPros.com/12378696](http://AviationPros.com/12378696)



## SERIES 9900 WIRELESS COMMUNICATION DEICING SYSTEM David Clark Company Inc.

The David Clark Series 9900 Wireless Headset Communication systems for deicing and anti-icing operations allow hands-free communication between the driver and bucket, clearly and in real time, and help to prepare the aircraft exterior for on-schedule departure in a safe, efficient manner.

[AviationPros.com/12359457](http://AviationPros.com/12359457)



## GEN2 VR DEICING SIMULATOR Global Ground Support

The Gen2 VR Deicing Simulator has an updated graphic engine that allows for full virtual reality. Up to eight users can simultaneously train on 18 different aircraft, while a ninth person can supervise and evaluate performance. Benefits include no wasted deicing fluid, no fuel spent operating trucks and no risk of damage to aircraft and GSE.

[AviationPros.com/12378114](http://AviationPros.com/12378114)





# LIQUID AUTOMATION SYSTEMS

A GLOBAL LEADER IN GLYCOL MANAGEMENT SOLUTIONS

Facilities System Design Consulting  
Wireless Tank Monitoring  
Portable Fluid Transfer Solutions  
ADF Blending Solutions

24/7 Remote & Field Service Support  
Hose Management Systems  
Operations Consulting  
Total Inventory Management Systems



Our glycol management solutions improve operations, efficiency and safety, while reducing cost and environmental impact of deicing operations.

## Are you ready for winter?



**LIQUID AUTOMATION SYSTEMS USA**  
+1 205-378-1060 • [sales@LAS-USALLC.com](mailto:sales@LAS-USALLC.com)



## ▶ 220 DEICER Textron GSE - Safeaero

The Safeaero 220 Deicer can perform deicing operations on aircrafts ranging from regional jets to the Airbus A380. This true one-person operation deicer has an average completion time of 90 seconds, a state-of-the-art spraying and blending system that reduces fluid consumption, automotive steering, wireless reporting system and much more.

[AviationPros.com/12339455](http://AviationPros.com/12339455)

## ▶ TFT NOZZLES Task Force Tips Inc.

Task Force Tips offers several deicing, anti-icing and combination nozzles for airports around the globe.



[AviationPros.com/12377729](http://AviationPros.com/12377729)

## ▶ POLAR GUARD ADVANCE Cryotech Deicing Technology

Cryotech Polar Guard Advance is an AMS 1428 certified, military approved, propylene glycol based Type IV aircraft deicing/anti-icing fluid. Manufactured in the United States, Polar Guard Advance has the



lowest LOUT in the industry at -22.9 F (-30.5 C), with long holdover times in all conditions, and low viscosity for easier handling. Cryotech's technical team is experienced in transitions and available to assist with any additional product questions. Cryotech is an ISO 9001:2008 and 14001:2004 certified company.

[AviationPros.com/11323689](http://AviationPros.com/11323689)

## ▶ GS1400SG AIRCRAFT DEICER Ground Support Specialist LLC

GSS's Second Generation Series line of Deicers offers a 40 percent increase in fuel efficiency over other deicers, along with a substantial reduction in both deicing fluid usage and carbon footprint emissions. The GS1400SG does this while still maintaining ease of operation, high levels of reliability, and lower maintenance costs.



[AviationPros.com/12375058](http://AviationPros.com/12375058)

## ▶ SPILL CONTAINMENT Safe Drain

Safe Drain designs, manufactures and installs stainless-steel storm drain 100 percent spill containment inserts for total protection of facilities and the environment. The containment systems protect military bases during fueling and deicing operations, hazardous materials spills and as a secondary containment solution for above ground storage facilities. The Safe Drain products can be easily installed in any size or shape storm drain enabling the end user to protect their storm drains from hazardous material spills and storm water pollutants. Quick, easy, cost-effective installation, with no construction, downtime or permits required. Easy open and close, 24/7 hydrocarbon and sediment capture, trash control and proven effective EPA compliance with storm water pollution prevention regulations.



[AviationPros.com/12079205](http://AviationPros.com/12079205)



## ▶ MERCURY DEICING MANAGEMENT SYSTEM Aviata Systems Inc.

This system provides a comprehensive solution for managing all aspects of aircraft deicing operations including deicing truck location and aircraft slot assignments, detailed transactional data capture, real-time performance monitoring of deicing pads, trucks, and personnel, and post-operational reporting and data analysis.

[AviationPros.com/12079324](http://AviationPros.com/12079324)



## ▶ PORTABLE VISCOMETER Hydramotion Ltd.

Measure the viscosity of deicing fluid with the Viscolite portable viscometer from Hydramotion Ltd. Simply dip the probe into fluid and see the viscosity reading instantly. Wipe the sensor clean and it is ready for re-use. The viscometer is factory-calibrated and does not need recalibration.

[AviationPros.com/11654481](http://AviationPros.com/11654481)

## ▶ PPS – PRECISE POSITIONING SYSTEM

### **Vestergaard Company Inc.**

The Vestergaard Elephant Beta deicers can be supplied with the PPS – Precise Positioning System. PPS helps constantly ensure the correct, optimal distance between the nozzle and aircraft – typically 1 meter, improving safety and reducing workload for the operator. With shorter spray distance, the highest possible ADF temperature can be kept.



[AviationPros.com/12335217](http://AviationPros.com/12335217)

## ▶ GLYCOL RECOVERY VEHICLE

### **Inland Technologies International Ltd.**

Inland's Glyvac glycol recovery vehicle offers fast clean-up of spent aircraft deicing fluid, reducing environmental impacts while offering 45 percent greater fuel economy over similar models. It is capable of quick offloading of up to 1,800 gallons/6,800 L in less than 10 minutes. Recovery functions are controlled from a panel inside the unit, minimizing the driver's time outside.



[AviationPros.com/12178199](http://AviationPros.com/12178199)



## ▶ NARROW-BODY DEICER

### **Textron GSE - Premier Engineering and Manufacturing**

Since 1992, the MT35P75 Express Heat deicer has been the industry standard in low-cost, narrow-body deicing for regional/commuter airlines.

[AviationPros.com/10290550](http://AviationPros.com/10290550)



**Worldwide Leader in Aircraft Refuelers**



**Ask About Our Leasing & Rental Options**

 **913-653-8100**    
  [skymarkrefuelers.com](http://skymarkrefuelers.com)    
  [sales@skymarkrefuelers.com](mailto:sales@skymarkrefuelers.com)

[AviationPros.com/11174155](http://AviationPros.com/11174155)



## EAGLEVIEW LARGE LED DISPLAY FOR REFUELING

**Tekinno Corporation Inc.**

The Eagleview Large LED Display for Refueling allows users to see critical information from a distance, eliminates need for a checker, reduces back and forth, displays volume, pricing or total and displays messages.

[AviationPros.com/12376822](http://AviationPros.com/12376822)

## AVIATION REFUELING PUMPS

**The Gorman-Rupp Company**



Gorman-Rupp's complete line of ground service pumps and related equipment have met the challenge of accelerated aircraft refueling and defueling requirements for more than 50 years.

[AviationPros.com/12377758](http://AviationPros.com/12377758)



## GAMMON TECHNICAL PRODUCTS

**Gammon Technical Products Inc.**

Gammon Technical Products is a manufacturer and distributor of aviation fuel (Jet and Avgas) equipment for quality control, handling and sampling, additive injection, static reels and cable, differential pressure gauges, overwing "Skyhawk" nozzle, bonding and grounding.

[AviationPros.com/12013911](http://AviationPros.com/12013911)



## FUEL TEST KIT

**Conidia Biosciences Ltd.**

The Fuelstat immunoassay test kit manufactured by Conidia Biosciences is a 100 percent accurate and low-cost method for detecting microbial contamination in middle distillate fuels (aviation, kerosene and diesel) with results provided in 10 minutes. Fuelstat is endorsed by International Air Transport Association (IATA), holds NATO stock numbers and is ASTM D8070 compliant.

[AviationPros.com/12306016](http://AviationPros.com/12306016)

## FUELING WING MAT

**Fjord Aviation Products**

Fjord Aviation Products AFP-1824 or AFP-1836 Wing Mat is designed to be used when fueling with over wing aviation fueling nozzles for aircraft that have top of the wing fueling ports. The mat prevents scratches, scrapes, dings, marks or streaks from the nozzle or hose or drips while fueling. It's made of high impact absorbing urethane polymer and is chemical and fuel resistant and flame retardant with operating temperatures from -20 F to 200 F.



[AviationPros.com/12362670](http://AviationPros.com/12362670)

## TCS 3000 REGISTER

**Total Control Systems**

The TCS 3000 register is a fully integrated flow computer that controls all delivery operations. The open software architecture provides users with a tailored system that is expandable for future needs. The TCS 3000 features Additive and Differential Pressure Measurement and Control, Inventory and Wireless Integration to back office software.

[AviationPros.com/12375007](http://AviationPros.com/12375007)



## JET FLEET REFUELERS

**Jet Fleet Management LLC**

Jet Fleet Aircraft Refuelers are available in 1,000, 3,000, 5,000, 7,000 and 10,000 gallon capacities. The company can work with clients to determine refueling requirements. Leasing and finance programs are readily available.

[AviationPros.com/12310945](http://AviationPros.com/12310945)



## INTELLITROL2 CONTROLLER

**Scully Signal Company**

The Scully Signal Company Intellitrol2 controller is designed for fueling safety. It provides overflow prevention, ground verification, vehicle identification and terminal automation communication all in one compact unit. Coupled with a trailer/refueler system consisting of an onboard monitor, sensors, ground bolt and vehicle identification module, it provides a fail-safe solution to petroleum fueling safety.



[AviationPros.com/12284423](http://AviationPros.com/12284423)



## A Great Ground Support Team Starts with Reliable Equipment



**LAV  
SERVICE**



**PALLET  
DOLLY**



**REFUSE**



**POTABLE  
WATER**



**LUGGAGE**



**FUELING**

Your world demands strength, quality, and service in which you can depend on and trust each and every day. Par-Kan understands that your customer's experience starts with what happens on the ground and assures them timely departures and arrivals.

Par-Kan is continuously improving its products in order to satisfy a constantly changing world and an increased demand in ground support equipment performance. You can count on Par-Kan to deliver quality products on time out of one of our five manufacturing facilities across North America.



## ▶ AVIATION ABOVE GROUND FUELING SYSTEMS

### American Environmental Aviation

American Environmental Aviation (AEAV) manufactures tanks and pumping systems for aviation fueling projects as well as complete turnkey construction solutions for aviation fueling and storage projects. The nationwide aviation fueling equipment manufacturer can design, manufacture, complete site work and install aviation fueling systems.

[AviationPros.com/12377621](http://AviationPros.com/12377621)



## ▶ HYDRANT TRUCK BETA Fueling Systems, LLC

BETA hydrant dispensers perform reliably for the world's most demanding oil companies, airlines and aviation fueling companies. All hydrant dispensers now feature the patent-pending Central Command Module with state-of-the-art reporting capabilities for the ultimate experience in data communications designed for rugged, hazardous, and mobile conditions. The design of this progressive system takes refueling equipment diagnostics, trouble-shooting, maintenance, and data reporting to new heights.

[AviationPros.com/12377026](http://AviationPros.com/12377026)



## ▶ AVIATION FUEL DISPENSING CABINET PEAR Hose Corporation

PEAR aviation fueling cabinets are designed and built with many years experience and assembled in the company's shop. Every unit is engineered to provide years of reliable service and designed to meet all applicable industry standards such as ATA103, EI1540, B836-14 and the NFPA407.

[AviationPros.com/12376858](http://AviationPros.com/12376858)

# Airport Construction & Maintenance Solutions



**We offer a full line of innovative products to meet FAA Advisory Circular standards.**

- Aerocade™ Low-Profile Airport Barricades
- Safe-Hit® Certified Airport Taxiway Markers
- Yodock® 2001 & 2001MB water-filled barricades to delineate work zones for construction and maintenance



**TRINITY**  
**HIGHWAY**  
**RENTALS**

[trinityhighwayrentals.com](http://trinityhighwayrentals.com)

**888.496.3625**

[AviationPros.com/12074727](http://AviationPros.com/12074727)

## FUEL TICKET AUTOMATION

### QT Technologies

The Fuel Ticket Automation system from QT Technologies simplifies the process for fuel suppliers, into-plane providers and airlines, and in the process, eliminates costly mistakes like mis-fuelings and over-fuelings. The system provides a cloud-based portal, which a fuel vendor is able to access and dispatch flights out to fuelers and manage the fueling operation, itself. Fueling vendors have access to tickets and reports about their fueling operation to confirm fuelings were done according to what was requested by a flight planning group.

[AviationPros.com/12378329](http://AviationPros.com/12378329)



## TOWABLE HYDRANT CART

### ProFlo Industries LLC

ProFlo Industries offers a 450 GPM (1,700 LPM) Towable Hydrant Cart with stainless steel and aluminum construction. This Hydrant Cart has numerous top of the line features (NFPA 407 and JIG compliant) and is available for immediate delivery.

[AviationPros.com/12377623](http://AviationPros.com/12377623)

### TOWABLE HYDRANT CART



## 15,000 GALLON JET REFUELER

### SkyMark Refuelers

The SkyMark 15,000 Gallon / 57 KL Jet Refueler is based on the company's 10,000 Gallon Jet Refueler, which is in operation around the world. It includes all of the SkyMark innovations found in the company's full line of equipment.

[AviationPros.com/12310563](http://AviationPros.com/12310563)

## STAINLESS STEEL HOSE ASSEMBLIES

### Goldstein-Schwartz Inc.

Stainless Steel Hose Assemblies are available for higher pressure / temperature flexible connections in order to handle fuels, deicing chemicals, and testing media.



[AviationPros.com/12215841](http://AviationPros.com/12215841)



## Prevent aircraft damage and improve on-time departures



Our rugged wireless communication headsets help ground crews prevent costly aircraft damage while doing more in less time.



Call 877-929-4569 ext. 108  
or visit [flightcom.net/commercial](http://flightcom.net/commercial)

© 2017 Flightcom Corporation

[AviationPros.com/10017282](http://AviationPros.com/10017282)

## FUEL HANDLING AND QUALITY CONTROL EQUIPMENT

### Crown Products Inc.

Crown Products, Inc. provides patented Water Detection Probes, Deadman Systems, and other products required to ensure fuel is at its best. The company also features a quick turnaround nozzle repair program and distributes quality products for leading manufacturers in aviation fuel filtration, refueling hoses, and new nozzles.

[AviationPros.com/12377740](http://AviationPros.com/12377740)



## FUEL TANK PURGE AND MAINTENANCE

### Rhine Air Inc.

Portable Fuel Tank Ventilation Equipment and Supplied Air Respiratory Protection Systems from Rhine Air operate on all model of aircraft and rotorcraft. It reduces maintenance turn times, while creating a safer working environment. Users have a choice of compressed air or electric driven versions, which can be used worldwide by both commercial and military customers.

[AviationPros.com/12376860](http://AviationPros.com/12376860)

## FUEL SERVICE CART

### Par-Kan Company

The Par-Kan FSC-300 X2 GSE Fuel Service Cart offers 600 gallons of total capacity, 300 gasoline and 300 diesel. With two hand pumps with meters, two fuel filters, static grounding reel and fire extinguisher, the equipment is mounted on a four-wheel product containment trailer.

[AviationPros.com/12274802](http://AviationPros.com/12274802)



NOW AVAILABLE

# AIRPORT BAGGAGE CART TIRE ASSEMBLY

### FEATURES & BENEFITS

- 5 BOLT PATTERN STEEL WHEEL WITH 3.375" PILOT HOLE
- TEMPERATURE & WEAR RESISTANCE
- LOW-ROLLING RESISTANCE FOR INCREASED EQUIPMENT EFFICIENCY

OTR | Industrial | Solid | Giant Solid | MTR | Logging | Mobile Crane | Bias

MIX & MATCH

CONTAINERS

ADVANCE

SAMSON

Mix and match your tire order per shipping container! Authorized distributors can mix and match any type of our Samson or Advance branded tires in one container shipment, including: MTR/Mobile Crane, Bias Truck, OTR/Logging, Industrial, Farm/Skid Steer and Solid/Giant Solid.

330.498.5000  
[www.gtcna.com](http://www.gtcna.com)



[AviationPros.com/12302452](http://AviationPros.com/12302452)





## DIDSBURY "PURGE AIR" FUEL TANK DRAINING, VENTING AND SAFE ENTRY SYSTEM

**The Deltic Group Inc.**

A convenient all-in-one system, endorsed and used by Airbus Industries, the system typically reduces a 24-hour natural venting process to under an hour. It offers suitable adapters for different aircraft types.

[AviationPros.com/12377446](http://AviationPros.com/12377446)



## HYDRANT CARTS

**Westmor Industries, LLC**

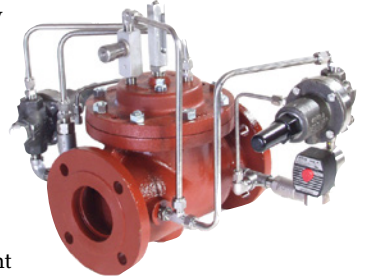
Westmor Industries has a customizable lines of aviation products available. Customers can choose options as well as the configuration. The company's Hydrant Carts are towable up to 25 mph and fuel up to 450 gpm. The units utilize a solar-powered electrical system with battery storage and electric registration system.

[AviationPros.com/12377780](http://AviationPros.com/12377780)

## MODEL 114-1E REFUELING CONTROL VALVE

**OCV Control Valves**

The OCV Model 114-1E is specifically designed for aircraft refueling service. Known as either a refueling or a hydrant control valve, it opens and closes electrically via a solenoid pilot. It also modulates to control downstream pressure at a predetermined set point while opening and closing rapidly to prevent undue pressure buildup due to a rapid reduction in demand.



[AviationPros.com/12377037](http://AviationPros.com/12377037)

# SCOUT

Always know where you are.



Now Available From

**CHARLATTE**  
AMERICA  
FAYAT GROUP

[www.CharlotteAmerica.com](http://www.CharlotteAmerica.com)

[AviationPros.com/10017106](http://AviationPros.com/10017106)



## ENGINE POWERED UNITS

### BatesField GPU

Batesfield GPU's Engine Powered Units have the ability to power from the hangar without running the engine, thus eliminating dangerous fumes and noise when in, or near, a building. Power outlets are also provided for vacuum cleaners, lights, air compressors, air conditioning, etc., or to open hangar doors during a power outage.

[AviationPros.com/12376868](http://AviationPros.com/12376868)



## WG2503 SPARK IGNITED ENGINE

### Kubota Engine America Corp

The WG2503 is one of Kubota's spark ignited engines. The gasoline model is offered at an output of 61 HP at 2700 RPM, the LPG model output is 61.7 at 2700 RPM and the natural gas model output is 56.9 HP at 2700 RPM.

[AviationPros.com/12375054](http://AviationPros.com/12375054)

## E-28 28.5 VDC GENERATOR

### Servicore G.S. Corp.

The e-28 is a 28.5 VDC generator with 2,000 amp cranking capacity and 600 amp continuous delivery; powered with a Perkins engine. It is fifth-wheel trailer mounted, has paint over galvanize body panels, and is easy to use and maintain. The unit includes a 30-foot output cable with aircraft connector.

[AviationPros.com/12375009](http://AviationPros.com/12375009)



## JETLINKSYS

### Unitron Power Systems

Unitron Power Systems offers the JetLinkSys, a self-contained cable management system with a 400Hz, 28VDC, 270VDC or combination Solid State Frequency Converter. The system is available in an overhead or fixed configuration.

[AviationPros.com/12375050](http://AviationPros.com/12375050)

## MODEL 3324QC-105 AMP GPU

### Start Pac/Rotorcraft Enterprises LLC

The Model 3324QC-105 amp GPU is designed for ground use to perform both engine starting and maintenance functions. This model can be used on the ramp to conduct engine starting and will provide 28.5V of continuous clean no duty cycle power when plugged into 220V AC wall power.



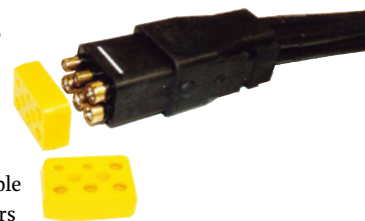
To recharge the unit, simply plug it into an AC wall power outlet and leave it plugged in when not in use. The high tech proprietary chargers will maintain 100 percent battery charge without over charging the batteries.

[AviationPros.com/12378741](http://AviationPros.com/12378741)

## ECONOSE-M

### Anderson Airmotive Products Co. Inc.

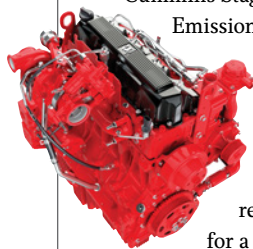
By replacing the severe wear area in a ground power plug with a super tough high density (HD) polymer, the life of the cable assembly is significantly increased. The EcoNose-M reduces wear on the plug nose and contacts, and protects plug contacts from deformation. It's compatible with all aircraft, and is available for over molded connectors and cable assemblies.



[AviationPros.com/12014467](http://AviationPros.com/12014467)

## STAGE V ULTRA-LOW EMISSIONS DIESEL ENGINES

### Cummins Inc.



Cummins Stage V Ultra-low Emissions Diesel Engines span 100 to 512 hp and are designed to meet 2019 European Union Stage V emissions regulations. Suitable for a range of GSE, the engines are designed with Exhaust Gas Recirculation (EGR)-free architecture. Stop-Start technology allows for increased fuel savings. Cummins Stage V Engines are also enabled for wireless connectivity, ready to deliver instant, expert engine diagnostics over the air so operators can maximize the uptime availability of their equipment.

[AviationPros.com/12376675](http://AviationPros.com/12376675)



## 400 HZ CABLE ASSEMBLY WITH HARDNOSE

### Page Industries

PAGE's 400 Hz, single-jacket, high-performance, six-around, one-cable assemblies with the replaceable hardnose provide many features. The robust design ensures long life on the ramp and the built-in safety features provide an extra level of protection to operators and the aircraft.

[AviationPros.com/12374994](http://AviationPros.com/12374994)



GLOBAL SUPPLIER OF  
**NEW AND REFURBISHED**  
AIRCRAFT REFUELING EQUIPMENT



Facility located by the International Airport in Medellin, Colombia. This facility will allow us to offer the best value, service and support to Latin American customers.



[www.profloind.com](http://www.profloind.com)  
[www.proflolatam.com](http://www.proflolatam.com)

📍 2679 S.US Highway 23 Alvada, OH 44802 📞 +1 419-436-6008 ✉ info@profloind.com

[AviationPros.com/12070958](http://AviationPros.com/12070958)



**AIRCRAFT CABLES,  
400HZ AND 270VDC  
MCM Engineering Inc.**

MCM manufactures a wide range of custom-built 400 Hz aircraft cables. The repairable connector offers low tension insertion, a hardened nose tip and can be molded on to banded or single-jacketed cable. The same style connector is employed for the company's 270VDC cable assemblies. Economic cable repair services are also available.

[AviationPros.com/12377712](http://AviationPros.com/12377712)

**7400 GPU  
ITW GSE**

The ITW GSE 7400 GPU is battery-powered and suited for gates without fixed 400 Hz. The 2400 solid-state converter is



powered by Nissan Leaf battery packs, and the 7400's modular design allows it to be equipped with 2-5 battery packs, enabling the GPU to fit your actual power requirements. The unit's on-board charger allows recharging from the nearest 50/60Hz socket. The zero-emissions unit, provides flexibility, requires no maintenance and comes with a five-year warranty.

[AviationPros.com/12375760](http://AviationPros.com/12375760)



**TIMSAN**



[www.timsan-gse.com](http://www.timsan-gse.com)  
[timsan@timsantr.com](mailto:timsan@timsantr.com)

Istanbul / Turkey  
+90 216 527 42 70



[AviationPros.com/10017842](http://AviationPros.com/10017842)

## ▶ 28.5V GROUND POWER UNIT

### Tronair Inc.

Tronair's new 28.5V ground power unit incorporates an award-winning Doosan Tier 4 final with electronic engine controls to provide excellent performance. A large Digital Display and Diagnostics module (DDD) allows a user to monitor engine parameters in addition to fault codes. A powerful 38kw six phase alternator, rectifier and ripple filter combine for ultra-low DC output ripple. A cable head voltage sensing and output voltage drop compensation system ensures full power is provided to the aircraft. A large 35-gallon fuel tank allows for 26 or more hours of run time at the rated load.



[AviationPros.com/12276402](http://AviationPros.com/12276402)

## ▶ RESISTIVE LOAD BANKS

### DEKAL

DEKAL offers a full line of resistive load banks in North America. The line includes modern 400HZ and 28VDC digital and analog resistive load banks for the GSE industry.

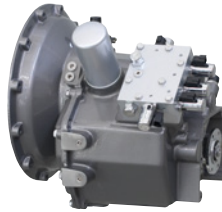


[AviationPros.com/12378274](http://AviationPros.com/12378274)

## ▶ POWER SHIFT TRANSMISSIONS

### Transfluid LLC

Transfluid power shift transmissions are available in one, two or three speeds forward and one or two speeds reverse. Consisting of a double gear train, actuated by integral hydraulic clutches, it connects to the engine through a wide range of torque converters. Torque converters are selected to optimize the driven machine performances.



[AviationPros.com/12377440](http://AviationPros.com/12377440)

## ▶ BULK CABLES AND 400 HZ CABLES ASSEMBLIES

### Philatron Wire & Cable

Philatron offers Bulk Cables and Advanced 400 Hz Single Jacket Cable Assemblies. The company offers items from copper rod to finished molded connectors under rigid ISO/TS 16949 certified quality programs.



[AviationPros.com/12377701](http://AviationPros.com/12377701)

# Simple Complexity

MIDAS												July 15, 2014 12:05:04 PM		
Avg device per aircraft: 0		# Aircraft per hour: 0.00		# of trucks service call status: 2		Logout for admin		Lock Screen						
Avg time per aircraft: 0		# of trucks operating: 38		# of trucks out of service: 2		Logout for user		Switch User						
Dashboard (MSP)												Logout		
Deicing Trucks														
Truck	Prod	Owner	Operator	Tail Number	Status	Deicing	Anti-Icing	Fuel	Water	Chassis	Acc	Heater		
103	Alpha	Kyle Name	Andy Davis	NE605	Full	10	20	20	10	✓	✓	✓	✓	✓
102	Alpha	JMP/Markus	Brad Nelson	NE197	Stand	0	0	0	0	✓	✓	✓	✓	✓
104	DA	Alain Babin	Jef Babin	NE271	Unassigned	0	0	0	0	✓	✓	✓	✓	✓
101	DA	David Baker	Kevin Nelson	NE271	Full	1	20	20	10	✓	✓	✓	✓	✓
105	Alpha	Markus Nelson	Mark Nelson	NE197	Stand	0	0	0	0	✓	✓	✓	✓	✓
106	DA	Markus Nelson	Jeff Davis	NE605	Stand	0	0	0	0	✓	✓	✓	✓	✓
107	DA	Mark Nelson	Kevin Nelson	NE271	Unassigned	0	0	0	0	✓	✓	✓	✓	✓
108	Alpha	Mark Nelson	Kevin Nelson	NE271	Stand	1	11	11	10	✓	✓	✓	✓	✓
109	Alpha	Tim Johnson	Mark Nelson	NE271	Stand	0	0	0	0	✓	✓	✓	✓	✓

Jobs				
Date	Tail Number	Aircraft	Prod	Trucks
Jun 10, 2014 4:41 PM	NE197	Alaska	D4	001
Jun 12, 2014 8:38 AM	NE197	American	D2	001
Jun 12, 2014 4:41 PM	NE605	American	D3	005,010,001
Jun 11, 2014 1:20 PM	NE605	Alaska	D4	011,001
Jun 5, 2014 2:22 PM	NE70417	Jet Blue	D3	028,017
Jun 5, 2014 1:10 PM	NE605	Alaska	D2	002,028,003,004
Jun 5, 2014 1:10 PM	NE605	Alaska	D1	011,030,003



**GLOBAL**  
GROUND SUPPORT  
AviationPros.com  
540 East 56 Highway • Olathe, KS 66062  
globalgroundsupport.com • 913.780.0300

MIDAS is a telemetry system that allows anyone with approved access to view live data on any of their deicing trucks with any Internet-connected device. This advanced telemetry system can be purchased on new vehicles or retrofitted on any manufacturer's equipment. MIDAS monitors performance, location, surface areas, aircraft ID's, operators and more.

**MIDAS**  
TELEMTRY



[AviationPros.com/10017340](http://AviationPros.com/10017340)



## NEXSYS TPPL BATTERY EnerSys

The NexSys battery by EnerSys uses Thin Plate Pure Lead (TPPL) technology to eliminate maintenance and offer revolutionary performance over conventional lead-acid batteries. The benefits include no watering, fast charge rates, cold temperature performance, excellent cycle life, shock and vibration resistance, light weight, and high energy density.

[AviationPros.com/12377760](http://AviationPros.com/12377760)

## ENVIRONMENTALLY FRIENDLY PCAS

### Verde GSE

Verde GSE's line of PCA units are born from the toughness and simplicity demanded by the military, utilizing the highest quality components and most advanced technologies available. With a foundation in energy efficient technologies, the company provides a PCA solution with efficiency, flexibility and serviceability.



[AviationPros.com/12014687](http://AviationPros.com/12014687)

## CHARGER AND BATTERY POWER SOLUTIONS FOR ELECTRIC GSE

### Averest, Inc

Averest, Inc. offers technically sound charger and battery power solutions for electric GSE, such as Deka Lead Acid Batteries, Flux Lithium Batteries and PosiCharge Outdoor Fast Chargers.

[AviationPros.com/12375071](http://AviationPros.com/12375071)



Electric GSE Solutions for Aviation



## POSICHARGE AeroVironment Inc./ Posicharge

PosiCharge is a provider of electric ground support equipment chargers powering 13 of the world's largest airports, six of the largest airlines and US Air Force bases around the world. The PosiCharge SVS, DVS and MVS product lines help keep operations running efficiently.

[AviationPros.com/12377444](http://AviationPros.com/12377444)



## MIGHT-E TRUCK Canadian Electric Vehicles

Might-E Truck is a Neighborhood Electric Vehicle (NEV) ideal for use as an off-road work vehicle at campuses, malls, resorts, parks, airports and other industries. Designed for low maintenance cost, Might-E Truck can outperform combustion vehicles both financially and mechanically. The Might-E Truck is built in North America using North American auto parts for durability and easy parts access.

[AviationPros.com/12377762](http://AviationPros.com/12377762)



## COMET 3 E ELECTRIC TOWING TRACTOR MULAG Fahrzeugwerk GmbH u. Co. KG

The MULAG Comet 3 E offers a simple and economical drive design to help ensure its application as a versatile electric towing tractor. Features include hydraulically suspended seats, clearly arranged operating controls in the driver's field of vision, and an adjustable steering wheel. The use of high-grade industrial components instead of standard components, helps reduce long downtimes and service cycles.

[AviationPros.com/12376680](http://AviationPros.com/12376680)

## MINI BATTERY VOLTAGE METER

### Kussmaul Electronics

This Easy-To-See and Easy-To-Mount Universal Indicator displays the current battery voltage on the vehicles dashboard. The indicator's unique design can be mounted in a switch blank on almost every major commercial grade truck or service vehicle. The back-lit LED 3-digit numerical display can be easily viewed in most lighting situations and provides current system voltage which is accurate to 100-millivolts. Get direct access to detailed and important data without having to check manually. Each unit is reverse polarity protected and carries a three-year warranty.



[AviationPros.com/12220667](http://AviationPros.com/12220667)

## QUANTUM GSE

### Advanced Charging Technologies (ACT)

Quantum GSE - an industrial battery charger and smart appliance, is NEMA 3R outdoor rated and optimized for airport ground support equipment. It is designed with Wi-Fi connectivity for remote monitoring, control and seamless integration with ACT's automated data management platform. It features conventional, opportunity, and fast charge capabilities all integrated into a single, modular design.



[AviationPros.com/12375061](http://AviationPros.com/12375061)



## ALTUS FAST CHARGER

### Minit Charger

Minit Charger is the premium provider of GSE fast charging and battery management web based applications. Minit Charger cloud-based applications provide managers visibility to charger and battery performance in real time. Real time notifications and alerts, via text or email, when the charger or battery are in a fault condition.

[AviationPros.com/12377773](http://AviationPros.com/12377773)

## Revolutionizing GSE leasing and asset management.



*Looking for ways to make doing business easier and more profitable? Then you'll want to take a closer look at Xcēd.*

Xcēd Aviation Services is a single source provider of flexible GSE financing and customized asset management services, including:

- Single investor financing
- Short- and long-term lease financing
- Short- and long-term rentals
- Used GSE trade-ins
- Sale and leaseback
- Buying and selling inventory
- Equipment refurbishment
- Refurbishment financing

We're also experts at uncovering hidden assets, which allows us to provide a wide range of incremental asset management service... services most banks and other lessors simply can't or won't offer.

# XCĒD

AVIATION SERVICES

A Sasser Family Holdings Company

[www.xcedaviation.com](http://www.xcedaviation.com)

425 North Martingale Road,  
8th floor  
Schaumburg, Illinois 60173  
844.213.9233  
[solutions@xcedaviation.com](mailto:solutions@xcedaviation.com)

Now Servicing the  
U.S. and Canada.

[AviationPros.com/11535271](http://AviationPros.com/11535271)



## LEASING AND FINANCING SERVICES

### Fortbrand Services, Inc.

Fortbrand Services has been in the business of leasing, financing, renting, maintaining and dealing in aircraft ground support and refueling equipment for more than two decades. The company utilizes its experience and expertise to provide tailor made programs to meet the specific requirements of its customers. Fortbrand Services also engages in related activities, including equipment appraisals, consulting, installation of specialized airport facilities projects, as well as acting as a distributor for the sale and lease of unique airfield maintenance equipment.

[AviationPros.com/10133657](http://AviationPros.com/10133657)



## TRANSPORTATION SERVICES

### Satellite Specialized Transportation

Satellite Specialized Transportation Inc. has a reputation and extensive resources to provide customers with excellent service. Satellite works diligently to provide its staff with every tool needed to stay educated and competitive in the transportation industry. With an experienced staff at two locations, Satellite Specialized Transportation Inc. is prepared for it's customer's transportation needs.

[AviationPros.com/12274741](http://AviationPros.com/12274741)

## TRANSPORTATION AND SHIPPING SERVICES

### Air Ocean Pros

Air Ocean Pros is a full service transportation provider dedicated to the ground support equipment industry. It is experienced in moving equipment for the airlines from airport to airport anywhere in the world.



[AviationPros.com/12376784](http://AviationPros.com/12376784)



AVIATION SERVICES

A Sasser Family Holdings Company

## AVIATION SERVICES

### Xced Aviation Services - Sasser Family Holdings Company

Sasser Family Holdings' aviation ground support equipment finance and asset management subsidiary, Xced Aviation Services, LLC, provides single investor equipment financing solutions and life cycle management of all aviation ground support equipment for North America. The company delivers end-to-end aviation ground support equipment financing and asset management solutions.

[AviationPros.com/12014721](http://AviationPros.com/12014721)



## GSE SALES, RENTALS AND LEASING

### Davin Inc.

Davin Inc. maintains a substantial inventory of late model GSE for immediate response to short-term rental requirements, and offers longer term leasing and sales of both new and used equipment.

[AviationPros.com/10027003](http://AviationPros.com/10027003)



## REFURBISHED GROUND SUPPORT EQUIPMENT

### Houston International Aircraft Support Inc.

Houston International Aircraft Support is now in its 32nd year of operation, offering a large inventory of catering trucks, refuelers, air starts, pushbacks, GPUs, belt loaders, baggage carts, deicers, etc. The company can provide a quote for any GSE need.

[AviationPros.com/12377619](http://AviationPros.com/12377619)



## SECOND HAND GROUND SUPPORT EQUIPMENT

### TCR International

TCR is a one-stop-shop supplier for GSE. The company offers operating leases, including including fleet management, repair and maintenance; and supply of after-rental GSE (second hand). TCR also offers refurbishment and spare parts.

[AviationPros.com/12377688](http://AviationPros.com/12377688)



# 2018 Leaders of the Year



## Accepting Nominations

### Product/Service Award

This award celebrates the products, services and manufacturers making a difference in the industry.

Winner will be featured in the March issue of *Ground Support Worldwide* magazine.

**Nomination Deadline: February 9, 2018**

**Nomination Form, visit: <http://bit.ly/2i5ejm7>**

### Team Leader Award

This award will go to an individual who has taken a leadership role with personnel.

Winner will be featured in the April issue of *Ground Support Worldwide* magazine.

**Nomination Deadline: March 7, 2018**

**Nomination Form, visit: <http://bit.ly/2hdaxHM>**

### Lifetime Achievement Award

This award will go to a person who has demonstrated commitment to the industry through numerous years of dedicated service.

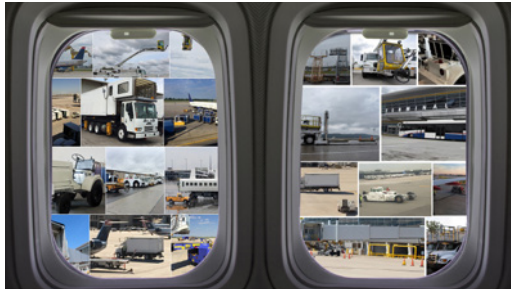
Winner will be featured in the May issue of *Ground Support Worldwide* magazine.

**Nomination Deadline: April 20, 2018**

**Nomination Form, visit: <http://bit.ly/2yLBrAv>**

**Ground**  
**Support**  
WORLDWIDE

*Winners from each category will be contacted by Ground Support Worldwide magazine.*



## GSE MAINTENANCE Global Aviation Services LLC

Global Aviation Services is the largest, GSE maintenance only, service provider in North America. The company's 320 technicians at more than 80 airports have the sense of urgency required to serve aviation industry maintenance needs.

[AviationPros.com/12376866](http://AviationPros.com/12376866)

## GSE LIFE CYCLE SPECIALISTS

### Somerset GSE Capital

Somerset GSE covers all GSE asset types, and offers financing options that include short-term rentals, rent-to-own structures and long-term leases. And with its global lessor financing capabilities in the U.S., Canada, most of Europe, and parts of Asia, Somerset GSE can ensure a customized financing solution for a clients' specific equipment requirements, no matter where they are.

[AviationPros.com/10817997](http://AviationPros.com/10817997)



## NEW, USED AND ZERO-TIMED GSE

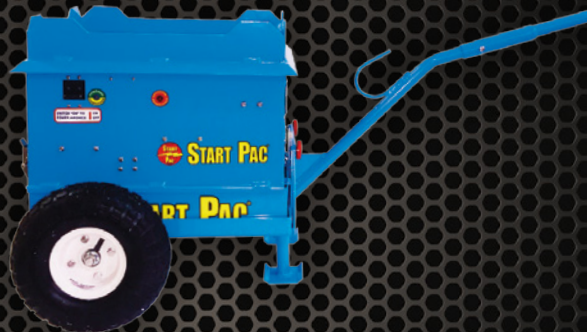
### Mercury GSE

Mercury GSE supplies new, used and zero-timed GSE available for purchase, rental or long-term lease. Mercury GSE carries a varied selection of used GSE in stock at all times.

[AviationPros.com/10817962](http://AviationPros.com/10817962)



## THE Li3326QC 200AMP PATENTED QUICK CHANGE GPU



- SOFT COOL STARTS EVERY TIME •
- 3000 PEAK AMPS FOR ENGINE STARTING •
- EXTENDS AIRCRAFT BATTERY LIFE •
- 26V • 200AMP AT 28V CONTINUOUS •

[www.STARTPAC.com](http://www.STARTPAC.com)  
OR TOLL FREE 844.901.9987

[AviationPros.com/10018066](http://AviationPros.com/10018066)

## GSE FINANCING

### TCF Equipment Finance

TCF Equipment Finance, a division of TCF National Bank (TCFEF), was established in 1999 and provides a full array of finance products nationwide to numerous industry segments, including airport ground support. TCFEF offers financing solutions to companies through programs with vendors and manufacturers as well as to customers direct.

[AviationPros.com/12378058](http://AviationPros.com/12378058)



## PRODUCT SUPPORT DOCUMENTATION AND TRAINING SERVICES

### ONEIL

ONEIL develops product support information and technology to support Aerospace, Commercial, and DoD programs. Its services include provisioning, technical writing, illustration, training, and technology solutions. Whether it's ground support, power plant, airframe, or avionics, ONEIL can help make product support better.

[AviationPros.com/12377719](http://AviationPros.com/12377719)





## GROUND HANDLING SERVICES

### Swissport International Ltd.

Swissport International Ltd. provides ground services for around 224 million passengers and 4.1 million tons of cargo a year on behalf of some 700 client-companies in the aviation sector. With its workforce of around 55,000 personnel, Swissport is active at 266 airports in 45 countries on five continents.

[AviationPros.com/10025374](http://AviationPros.com/10025374)

## RAMP HANDLING

### Menzies Aviation

Menzies Aviation sets a high standard in delivery of complex ramp services, conveying passengers, luggage and cargo to and from aircraft with clockwork precision, while simultaneously tending to a range of technical needs. The company also provides fueling and cargo services.



[AviationPros.com/12378062](http://AviationPros.com/12378062)

## LOGISTICS SERVICES

### EMR Logistics, Inc.

The staff at EMR Logistics can guide its clients through their transportation needs. The company uses a simple model of safety, honesty and competitive pricing to provide trusted carrier service.



[AviationPros.com/12274739](http://AviationPros.com/12274739)



## GROUND HANDLING SERVICES

### GAT Airline Ground Support

GAT Airline Ground Support offers a broad portfolio of services at locations throughout the United States. The company provides high quality, regulatory compliant services to its aviation customers while ensuring a safe and productive environment for employees and customers. GAT also maintains a dedicated training and compliance department to ensure full compliance with its customer's policies and procedures as well as any participating governmental agencies.

[AviationPros.com/12378060](http://AviationPros.com/12378060)



## GSE SERVICES

### Omega Aviation Inc.

With 25 years of experience in selling, leasing and repairing ground support equipment, Omega offers air conditioners, aircraft jacks, air starts, baggage carts, belt loaders, baggage tractors, cargo dollies, cargo loaders, catering trucks, deicers, fork lifts, fuel trucks, ground power units, maintenance stands, passenger stairs, pushbacks, towbars, lavatory trucks/carts, water carts and wheelchair lifts.

[AviationPros.com/12376855](http://AviationPros.com/12376855)

# Be Safe, Not Sorry!

Save your staff from themselves with AERO Specialties' new line of safety certified GSE! Whether it's towing, ground power or lavatory service, you can count on AERO to keep you operating safely.



+1 208-378-9888 | [www.aerospecialties.com](http://www.aerospecialties.com) € €

[AviationPros.com/100169200](http://AviationPros.com/100169200)

# LAV AND POTABLE WATER CARTS



## E-ZVTS VACUUM TOILET SERVICE UNIT Vestergaard Company Inc.

The E-ZVTS is a gasoline-electrically driven vacuum toilet service unit containing all the features of the ZVTS, such as the vacuum system. The E-ZVTS creates less airborne particles in the congested gate environment and no exhaust filter regeneration. The gasoline-powered chassis drives a generator, which in turn drives all functions on the E-ZVTS. The E-ZVTS can be fitted on different standard truck chassis to fit various operations.

[AviationPros.com/12378371](http://AviationPros.com/12378371)

## AIRCRAFT LAVATORY SYSTEM CLEANER Mirandy Products Ltd.

Mirabowl Q contains water softeners, burnishing agents and other active ingredients which protect the entire



system from fouling and calcification. This means that all o-rings, hoses, seals, and other parts of the system are protected and require less maintenance than when exposed to other products. It controls odor up to 14 hours.

[AviationPros.com/12362643](http://AviationPros.com/12362643)

## SAFE-LAV AERO Specialties

Countless dollars and flight hours are lost each year due to damage caused by overfilling the aircraft lavatory system. The new patented AERO Specialties Safe-Lav carts batching system determines and restricts the maximum quantity of fluid that can be delivered to the airframe. This product can be installed on new lavatory service carts or as a retro-fit kit to units in the field.

[AviationPros.com/12356980](http://AviationPros.com/12356980)



## LAVATORY CARTS Flight GSE Ltd.

Flight GSE offers Lavatory Carts using T316 stainless 600 liter waste tank and 300 liter flush tank; 12V Solar onto 12V battery pushing a 17 liter per minute pump; and T316 4" ball valve to gravity dump.

[AviationPros.com/12340058](http://AviationPros.com/12340058)

## POTABLE BOTTLED WATER CART Alberth Aviation

Alberth Aviation manufactures a Potable Bottled Water Cart designed to deliver guaranteed clean water to the aircraft every time. Four standard five gallon water bottles make this cart easy to maintain and provide a simple way to track water sales.

[AviationPros.com/12113126](http://AviationPros.com/12113126)



## WATER SERVICE UNIT Nandan GSE Pvt. Ltd.

Nandan GSE's self-propelled and towable Water Service Units (Water Servicing Vehicle) are used to supply potable water to the aircraft. Varieties of configurations are available. The units deliver efficient results and energy savings. Suitable for regional operations, the units are built on a reliable chassis. The water service unit is designed for wide body operations.

[AviationPros.com/12216248](http://AviationPros.com/12216248)



## GALVANIZED LAVATORY CART Aeroservicios USA Inc.

Aeroservicios offers a new lavatory cart over a galvanized, rust-free chassis. It has a capacity of 155 Gallons Drain, 155 Gallons Flush, plus a Briggs & Stratton 550 gasoline pump, meter and 12-foot flushing hose. It can drain to bottom or side, and worldwide shipping is available.

[AviationPros.com/12377722](http://AviationPros.com/12377722)



## LAV HOSE Hi-Tech Duravent

The Hi-Tech Duravent Lav Hose is designed to withstand the rugged conditions of an airport ramp. This industry tested, durable urethane hose is thermally bonded with nylon helix, and is abrasion, crush and kink resistant. It is translucent blue with smooth interior walls and durable blue cuffs.

[AviationPros.com/10027375](http://AviationPros.com/10027375)

## SELF-SEALING LAVATORY SERVICE FILL & FLUSH COUPLING AIRLINX Aircraft Services Inc.

AIRLINX's self-sealing lavatory service fill/flush coupling is designed to prevent ramp spillage. After use, the coupling can be disconnected from the aircraft without shutting off flow to the hose. Upon disconnection of the coupling, the integral poppet automatically closes, preventing the pressurized line from spilling blue fluid onto the ramp.

[AviationPros.com/12377698](http://AviationPros.com/12377698)



## VACUUM LAVATORY SERVICE TRUCK Accessair Systems Inc.

This vehicle features an automated control system, based on preset quantities, whereby the selection of the aircraft type by the operator allows the aircraft to be serviced automatically. A Data Logger is also available allowing the retrieval and storage of data via Wi-Fi, USB, etc.

[AviationPros.com/10027590](http://AviationPros.com/10027590)

## POTABLE WATER CABINETS GNY Equipment LLC

GNY Equipment's Potable Water Cabinets are UL listed units that expedite dispensing of potable water to aircraft in congested loading locations through 200 ft. plus hoses. Cabinets are double wall, insulated and heated stainless steel with two large doors. They can be mounted or flush through terminal wall, on pedestal of loading-bridge or be free standing.



[AviationPros.com/10026291](http://AviationPros.com/10026291)

## WATER DISINFECTION EQUIPMENT AeroSafe Products Inc.

AeroSafe manufactures potable water disinfection equipment to clean and disinfect aircraft water systems. The equipment is available in towable, roll-around, self-contained and wall-mounted systems.

[AviationPros.com/11191724](http://AviationPros.com/11191724)



## BLUBAGGER Concept Reality LLC

The BluBagger Universal Chassis is designed to hold 300 gallons of waste and 180 gallons of refill solution or water, or this chassis can become a potable water truck, utility, maintenance, baggage carrier, and a belt loader.

[AviationPros.com/10027758](http://AviationPros.com/10027758)



## U.S. AIRMOTIVE GSE YOUR ONE STOP SOURCE SINCE 1963

SERVING THE GSE INDUSTRY  
FOR OVER 50 YEARS



ATTACHABLE PLUGS  
AND RECEPTACLES



CRUSH PROOF  
LAV HOSE



LAV COUPLINGS  
AND FITTINGS



JET STARTER HOSES  
AND COUPLINGS



GSE  
PARTS



SAFETY  
PRODUCTS



WATER HOSES, COUPLINGS  
AND FITTINGS



A/C CABLE ASSY  
WITH NOSE



GSE  
PRODUCTS



FULLY WELDED  
PCA HOSE

MIAMI, FL

305.885.4992

[sales@usairmotivegse.com](mailto:sales@usairmotivegse.com)

[WWW.USAIRMOTIVEGSE.COM](http://WWW.USAIRMOTIVEGSE.COM)

LOS ANGELES, CA

310.327.8407

[paula@usairmotivegse.com](mailto:paula@usairmotivegse.com)

[AviationPros.com/10017906](http://AviationPros.com/10017906)

## ADVANCED TECHNOLOGY ENGINES

### Engine Distributors Inc.

Engine Distributors Inc. offers a line of LSI industrialized Ford engines, which are available and serviced through a global dealer network. The line of EPA- and CARB-certified 1.6-, 2.5-, 3.7- and 6.8-liter engines range from 20 to 200 horsepower. They are available in gasoline, LPG, CNG, natural gas and duel fuel. The company offers a five-year, 5,000-hour warranty for the GSE market.

[AviationPros.com/12275602](http://AviationPros.com/12275602)



## PORTABLE ELECTRIC DRIVEN GAS BOOSTER

### Hydraulics International Inc.

The Hydraulics International, Inc. (HII) portable Electric Driven Gas booster is rated to 10,000-psi for Breathing air/N<sub>2</sub> and 4500-psi for Oxygen service. It is ideal for filling or topping off cylinders, tires, accumulators, struts, and life rafts. Its two-stage and double acting design uses no belts or pulleys, making it the quietest electrically operated booster in its class at only 60 decibels. Complete with safety controls, filters, gauges and valves.

[AviationPros.com/10027134](http://AviationPros.com/10027134)



## GS Series Deicers

*"An Economical Approach to Deicing"*

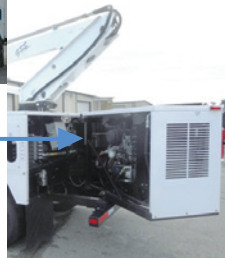


## Ground Support Specialist

*The latest technology, designed to fit your budget*



- ✓ Single Engine Design
- ✓ Dedicated Custom Chassis
- ✓ Lowest Emission 980,000 BTU Heater on the Market
- ✓ Swing-out Engine Module
- ✓ Meets California BTU Emissions Requirements



GSS Deicers  
Save you Money  
Compared to Conventional  
Two-Engine Deicers  
**Fuel Cost: 44%**  
**Maintenance Cost: 37%**

Ground Support Specialist L.L.C. • (662)342-1412 • [www.gssonline.com](http://www.gssonline.com)

[AviationPros.com/10017370](http://AviationPros.com/10017370)



## ELECTRIC TWO-STAGE, HORIZONTAL-TANK STATIONARY AIR COMPRESSORS

### Jenny Products Inc.

The Jenny Products line of Electric Two-Stage, Horizontal-Tank Stationary Air Compressors can be used for applications requiring greater pressure as the line displaces between 9.1 and 107.0 cfm at 175 psi. Made in the U.S.A., the 22 belt-driven models in Jenny's two-stage horizontal-tank line provide an extensive range of size and power options, with tank sizes spanning from 60 to 240 gallons.

[AviationPros.com/12297172](http://AviationPros.com/12297172)



## MODULAR COMPONENT WORK PLATFORM

### ModTruss, Inc.

ModTruss makes a modular component system that lets users build any kind of platform, stand, dock or structure that you could ever need for aircraft maintenance. It is quick to design for, quick to implement, easily reconfigurable for multiple airframe types, and easily storable when not needed.

[AviationPros.com/12362667](http://AviationPros.com/12362667)

## C6 TRANSMISSION PACKAGE

### Powertrain Control Solutions (PCS)

The PCS C6 replacement transmission is a result of extensive development and engineering to provide a 100-percent new, electronic transmission bolt-in solution for C6 users. The C6 replacement package includes a 100-percent factory new GM four-speed transmission equipped with a bellhousing, torque converter, and extension housing that replicate a Ford C6 transmission. The vehicle's existing engine



adapter, transmission mount, parking brake and driveshaft can be used without modification. The transmission includes the patented PCS abuse protection and electronic range valve body.

[AviationPros.com/12376148](http://AviationPros.com/12376148)



## SCISSOR DECK MAINTENANCE PLATFORMS

### Easy Access Industrial Design Inc.

Scissor Deck Maintenance Platforms fold flat, store and transport easily as they are fabricated out of high-tensile aluminum. The platforms may be connected together for wrap-around work zones. Powered deck models were scheduled to launch in September.

[AviationPros.com/12377436](http://AviationPros.com/12377436)

# FOD\*BOSS - FOD GONE



- ✦ Unbeatable performance
- ✦ Removes nuts, bolts, washers, stones, sand
- ✦ No motors, vacuums, magnets
- ✦ Sweep widths 8', 16', 24' / 2.4m, 4.8m, 7m
- ✦ Efficient and fast - up to 30mph / 50kph
- ✦ Works on all surfaces - wet or dry
- ✦ Low cost, portable, reliable
- ✦ Maintenance free
- ✦ Easy to use

Photo courtesy of NASA

[fodboss@aerosweep.com](mailto:fodboss@aerosweep.com) or visit [www.fodboss.com](http://www.fodboss.com)

This product is subject to one or more of the patents and/or patents pending as listed at [www.aerosweep.com](http://www.aerosweep.com)

DISTRIBUTED IN THE U.S. BY MYSLIK, INC. ☎ 303.697.9692

[WWW.MYSLIKINC.COM](http://WWW.MYSLIKINC.COM) | [bmyslik@myslikinc.com](mailto:bmyslik@myslikinc.com)



[AviationPros.com/10287496](http://AviationPros.com/10287496)

# MAINTENANCE SERVICES AND SHOP EQUIPMENT



## WHEEL & BRAKE DOLLY ColumbusJACK/Regent

The Wheel & Brake Dolly is used worldwide by most major airlines, making wheel changes a one-person operation. It is a portable self-contained unit capable of handling and transporting either a wheel/tire or brake assembly during the removal from or installation on an aircraft.

[AviationPros.com/11195549](http://AviationPros.com/11195549)

## COWL PUMP-THRUST REVERSER SERVICE CART

**FluidTran Inc.**

The custom engineered Flightmaster Heavy Duty Cowl Pump-Thrust Reverser is designed to service engine cowls and thrust reverser systems. It has proven superior flight line performance and can be customized for compatibility to all aircraft.

[AviationPros.com/12375022](http://AviationPros.com/12375022)



## P-8A AXLE JACK

**Malabar International**

An ideal axle jack for the P-8A Poseidon aircraft, Malabar's Model 50P9AR with a 50-ton capacity is designed primarily for use in jacking the main and/or nose landing gear of the P-8A and similar sized aircraft. The jack consists of a two-stage cylinder assembly, frame/reservoir assembly, valve block assembly, hand pump assembly and control console.

[AviationPros.com/12333261](http://AviationPros.com/12333261)



**WE HAVE UNITS AVAILABLE FOR QUICK DELIVERY!**

*The most innovative PCA technology on the market today.*

Our units offer:

- Low Maintenance
- High Reliability
- Unmatched Performance
- Online Monitoring
- Intelligent Controls



**LEASING PLANS AVAILABLE**

**CALL: (888) 837-5221**  
EMAIL: [sales@verdegse.com](mailto:sales@verdegse.com)  
Visit us at: [www.verdegse.com](http://www.verdegse.com)

[AviationPros.com/11588331](http://AviationPros.com/11588331)



## TIRE INFLATION CAGE

**Alberth Aviation**

Alberth Aviation's Tire Inflation Cage was designed and tested for the aviation industry to protect employees from overinflation injuries and prevent costly hangar and aircraft damage. It is OSHA and military compliant and has triple over-pressurization safety features. The new larger cage is now available for G650 and Global Express wheels.

[AviationPros.com/12375067](http://AviationPros.com/12375067)





## MOBILE NITROGEN UNIT Cv International, Inc.

The Cv International Mobile Nitrogen Unit, MNU-30, is a mobile (truck-mounted) nitrogen system with high and low pressure capabilities for servicing aircraft tires, struts, fuel tank inerting and escape slide inflation.

[AviationPros.com/12376846](http://AviationPros.com/12376846)

## GSE MAINTENANCE SOFTWARE

### DatcoMedia, LLC

EBis GSE Express is a proven web based software platform that can run a complete under-wing operation for both commercial and maintenance providers. Reduction of failures, increased productivity along with integrated telemetry and supply chain are some features of its easy-to-use interface.



[AviationPros.com/11192282](http://AviationPros.com/11192282)



## AIRCRAFT MAINTENANCE AND ENGINE ACCESS STAND 07-10

### Liftsafe Fall Protection Inc.

This stand was created for the A350 and B777. Ensuring confidence when using the stands to change LRU'S, users can adjust components or connect/disconnect engines and nacelles. A lighter design, smaller footprint and greater geometry are the focus. The stand is designed and tested in accordance with ANSI-ASC A14.7 and BS EN 131.7 and CE Certification.

[AviationPros.com/12376829](http://AviationPros.com/12376829)



## SERIES L 70000 CORD REELS Reelcraft Industries Inc.

Reelcraft's Series L 70000 cord reels are designed to accommodate up to 100 feet of 12-gauge cord. The heavy duty base design, all-steel construction and a baked-on powdercoat finish combine to produce a rugged, corrosion-resistant product. Two sealed ball bearings produce a smoother spool rotation and easier operation.

[AviationPros.com/12374996](http://AviationPros.com/12374996)

## ST 1130 MOBILE COLUMN LIFT Steril-Koni

The ST 1130 is engineered to deliver extremely high-capacity lifting - 29,000 lbs. per column and 116,000 lbs. for a set of four. The mobile column lift also offers added productivity, efficiency and durability.



[AviationPros.com/12375014](http://AviationPros.com/12375014)

# READY, SET, GO HARLAN!!!

Charger Electric  
Baggage-Cargo  
Tractor  
Model HLE



Express Electric Belt Loader  
Model HBLE



Classic Baggage-Cargo  
Tractor  
Model HT30-60



Cargomaster  
Baggage-Cargo  
Tractor  
Model HT80-100



TransCon  
Baggage-Cargo  
Tractor  
Model HTSB30-60



TransCon APV  
Baggage-Cargo Tractor  
Model HTSBAPV



[www.harlan-corp.com](http://www.harlan-corp.com) • +1-800-255-4262 • [sales@harlan-corp.com](mailto:sales@harlan-corp.com)

[AviationPros.com/10017401](http://AviationPros.com/10017401)

As a manufacturer of our own parts and components, we have the ability to customize parts as well as support parts beyond standard expected part life in the industry.



## ▶ SPIRAL BOX STAIRS FAST Global Solutions

The FAST Global Solutions Spiral Box Stairs can be created to fit every customer's safety department. The main frames for the staircases feature tubular steel for optimal stability and capacities of 1,000 pounds (454 kilograms) or more, as required. Grip Strut steps and platforms provide slip protection, and the stairs also are equipped with towbar-actuated brakes. Spiral Box Stairs are available in fixed or adjustable height options.

[AviationPros.com/12284212](http://AviationPros.com/12284212)

## ▶ PAXLIFT

### Baumann S.r.l.

The PaxLift Ambulift from Baumann lifts from ground level to 8 meters, and offers integrated suspension, multi-purpose use and four steering wheels for maximum maneuverability. The PaxLift has a 100KW diesel engine for a speed up to 30km/h for ground support equipment operators. It also provides a dedicated Airport Passenger Transport design and high lifting capacities (up to 2.000kg). Additional benefits include space for six wheelchair passengers with assistance, a compact design (3,100mm height and 2,550mm width), a small turning radius (less than 7 meters) and one-man operation.

[AviationPros.com/12289607](http://AviationPros.com/12289607)



## ▶ JETWAY SYSTEMS AIRCRAFT BRIDGE

### JBT AeroTech, Jetway Systems

The Jetway TeleRadial Regional Bridge from JBT AeroTech, Jetway Systems, is part of a complete line of JBT supplies mobile ground support equipment; Jetway passenger boarding bridges; and JetAire preconditioned air units and JetPower 400Hz ground power in point-of-use, stand, mobile and military configurations. Additionally, JBT supplies airport asset management, consulting and repair services.

[AviationPros.com/10024665](http://AviationPros.com/10024665)



## ▶ TRUCK-MOUNTED STAIRS

### Phoenix Metal Products

Phoenix Metal Products, Inc. offers a passenger stair to complete its full product line. The model PNX-PAS228 Truck-Mounted Passenger Stair has a door sill height from 96 inches down to 228 inches up. The chassis is a Ford F450 SD with six stabilizers.

[AviationPros.com/10219299](http://AviationPros.com/10219299)



## ▶ AIRCRAFT BOARDING STAIRS

### Aeroservicios USA Inc.

The Model 95-145 Aircraft Boarding Stairs are compatible with multiple aircraft, including the MD80, B737, A319 to A321 and ERJ 190.

[AviationPros.com/12377438](http://AviationPros.com/12377438)



## ▶ SAV5800 SELF-PROPELLED AMBULIFT

### Timsan

The Timsan SAV5800 is a self-propelled ambulift for transporting the reduced mobility passengers to all type of aircrafts with front platform service heights from 0 mm to 5800 mm. All aircraft doors are safely interfaced with the newly designed collision detection system of Timsan-GSE. It is designed with a trustworthy can-bus system and sturdy structure, which can carry up to eight wheel-chaired passengers and four attendants.

[AviationPros.com/12379031](http://AviationPros.com/12379031)



## ▶ PXO EXPRESS PASSENGER STAIRS

### Keith Consolidated Industries

The PXO Express Passenger Stairs are towable, non motorized passenger boarding stairs that feature a hand crank style lifting mechanism. The PXO Stairs also offer outriggers and stabilizing feet as well as sliding gates on the level platform and can be used at the L-1 or L-2 door.

[AviationPros.com/12083073](http://AviationPros.com/12083073)



## FRONTBULL AMBULIFT Bulmor Industries GmbH

The FrontBull Ambulift turns on a radius of only 4.65 m. A space-saving sliding door provides space for two wheelchairs and one attendant each. Additional storage space is also available as the driver's area is in the passenger compartment.

[AviationPros.com/12375335](http://AviationPros.com/12375335)



## AIRSIDE BUSES Cobus Industries LP

Many clients utilize Cobus for airside passenger transportation between terminals, but with airports facing limitations regarding terminal expansions, there is increasing demand for aircraft hardstands.

[AviationPros.com/12376873](http://AviationPros.com/12376873)



## LOADING BRIDGE CANOPIES Estex Manufacturing Co. Inc.

Estex manufactures all styles of PLB canopies. With more than 20 years of experience, the company offers tough and durable fabrics to meet specifications NFPA 415 & 417 and 25.853(b). Facia pads and adapter pads are available as well.

[AviationPros.com/12377727](http://AviationPros.com/12377727)



## TOWABLE PASSENGER STAIRS TBD

TBD's range of Towable Passenger Stairs (TPS) – based on its popular parallel geometry stairs – boasts galvanised welded assemblies, low maintenance, and harsh weather resilience. Features include: no-touch docking and interlocked safety attributes. The optional self-propelled pedestrian module allows easy one-person docking.

[AviationPros.com/12376649](http://AviationPros.com/12376649)



## MOBILE STAIRS NMC-WOLLARD Inc.

NMC-Wollard Mobile Stairs can reach doorsills up to 228". The company offers the CMPS 170 Stair and CMPS 228, which offer a reach of 170.5" and 228", respectively. Both models are available with electric power. A quiet, efficient propulsion system offers a pro-active option. Diesel and gas power units also are available.

[AviationPros.com/12295209](http://AviationPros.com/12295209)

# HANDS ON TRAINING FOR YOUR STAFF

*Available at our place or yours*



*A combination of classroom and hands on training in:*

- Basic Hydraulics
- Equipment Operation
- Preventative Maintenance
- Repair & Overhaul
- Troubleshooting
- Testing



**ColumbusJACK | Regent**

GLOBAL SUPPLIER OF GROUND SUPPORT EQUIPMENT

*"The Strength of Experience"*

Contact Ron Bivens

614.643.2401

[rbivens@columbusjack.com](mailto:rbivens@columbusjack.com)

[www.columbusjack.com](http://www.columbusjack.com)

[AviationPros.com/10134078](http://AviationPros.com/10134078)

# PUSHBACKS, TRACTORS AND UTILITY VEHICLES



## AP8950SDB-AL-250 TOWBARLESS PUSHBACK TRACTOR **LEKTRO, Inc.**

LEKTRO's AP8950SDB-AL-250 is an emissions free, towbarless pushback tractor. Certified to tow virtually every narrow-body airliner from the B757 down through regional turboprops, this tug can handle them all.

[AviationPros.com/12371112](http://AviationPros.com/12371112)



## TECKNOSIM PUSHBACK AND TOW SIMULATOR **Tecknotrove Systems**

The Tecknotrove Systems TecknoSIM Pushback and Tow Simulator combines the original controls of pushback equipment with a high definition curved display screen and is mounted on a 3 DOF electric motion platform to create a realistic and immersive training experience. TecknoSIM simulates the both towbar and towbarless pushback equipment with actual vehicle dynamics and realistic airport environment. The simulator allows training operators pushback operations on 15 types of aircrafts from the Airbus range A330 to A380 and Boeing range 737 to 787.

[AviationPros.com/12349154](http://AviationPros.com/12349154)

## SIPSHITCH **AERO Specialties**

The SiPsHitch patented linear force monitoring system alerts tractor operators to overstress situations before they cause aircraft nose gear damage, affording improved levels of protection in towing operations. SiPsHitch is a add on option for all makes of aircraft towbar type tractors.

[AviationPros.com/12371122](http://AviationPros.com/12371122)



## TBL-280 TOWBARLESS TRACTOR **Textron GSE - Douglas Equipment Ltd.**

The Douglas TBL-280 towbarless aircraft handling tractor is designed for pushback, inter-gate towing and longer distance maintenance towing operations at higher speeds.

[AviationPros.com/12377049](http://AviationPros.com/12377049)

## CT5G BAGGAGE TRACTOR **Charlatte of America**

The CT5G comes with a choice of two gas engines - either a Ford four-cylinder, 2.5-liter engine or a four-cylinder, 2.8-liter engine from Zenith Power Products LLC - or a Deutz diesel engine. A Paillard axle is in front and an AxleTech axle in back.

[AviationPros.com/10818003](http://AviationPros.com/10818003)



## TRANS-CON MODEL HTSBAPV TRACTOR **Harlan Global Manufacturing LLC**

The versatile Harlan Trans-Con Model HTSBAPV, is equipped with a rear deck that can be used for tools, generators, scissor-lifts, oil coolers, etc., making it an ideal all-purpose maintenance vehicle. The compact, shorter wheelbase and low-profile design is robust and allows for excellent all-around visibility. Many options are available including beacons, hitches and suspension-style seats.

[AviationPros.com/12372336](http://AviationPros.com/12372336)





## LO RISER INCLINING PLATFORM TRAILER Advance Metalworking Co. Inc., The

The 16,000-pound capacity Lo Riser Inclining Platform Trailer hydraulically lowers the platform to ground height with the flip of a switch. The built-in ramp then allows smooth, drive-on access without any crown point to fight for quickly loading or unloading cargo or equipment. For added versatility, the four-position ball hitch allows the Lo Riser to adjust to various vehicle heights. Other features include a four-degree minimum angle on the built-in ramp, a 19,725-pound GVWR and a four-to-one payload-to-trailer weight ratio.

[AviationPros.com/10278083](http://AviationPros.com/10278083)

## SPACER 8600 Mototok America LLC

The Mototok Spacer 8600 is suited for pushback operations. The Spacer 8600 comes with a NTO license for 737's and 320-family, with other follows soon. With extreme low initial and maintenance costs, the eco-friendly electric drive and the one-man-operation without the need of any driving license, users can utilize this tug for all apron and hangar operations.

[AviationPros.com/12375042](http://AviationPros.com/12375042)



## XM SERIES Eagle, a Tronair Company

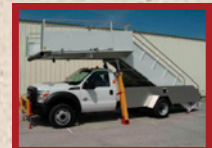
The Eagle XM Series features the latest Tier 4 Final Cummins diesel engine and is CE compliant for Europe. The four-wheel drive vehicle is capable of moving all variations of 737 and A320 aircraft. The XM Series is backed by a three-year, 3,000-hour warranty and is built in the USA. Eagle also offers factory direct service and support.

[AviationPros.com/12378553](http://AviationPros.com/12378553)

## MORE THAN 20 YEARS OF QUALITY GSE PRODUCTS!



### NARROW BODY TO WIDE BODY STAIRS



### LAVATORY AND WATER SERVICE CARTS & TRUCKS



### MAINTENANCE LIFTS

### BELT LOADERS



METAL PRODUCTS, INC.

300 INDUSTRIAL AVENUE 3  
FT. PIERCE, FL 34946  
PHONE: (772) 595-6386 / FAX: (772) 595-6389  
EMAIL: [phoenixgse@earthlink.net](mailto:phoenixgse@earthlink.net)  
WEBSITE: [www.phoenixgse.com](http://www.phoenixgse.com)

[AviationPros.com/10117661](http://AviationPros.com/10117661)

# PUSHBACKS, TRACTORS AND UTILITY VEHICLES



## CYBERWATCH SMS Keytroller, LLC

The Cyberwatch LAN device is a self-contained WiFi wireless hour meter for use on all types of ground support equipment – both internal combustion units and electric. It reports hour meter information from four inputs automatically via email, which are parsed to create Excel spreadsheets for easy viewing and charting the usage of the machine. It is also offered in a cellular version.

[AviationPros.com/12317519](http://AviationPros.com/12317519)

## PUSHBACKSIM TRAINING SIMULATOR

### L3 Driver Training Solutions

The PushbackSim allows users to simulate aircraft ground handling operations, minimizing aircraft damage and improving ground operator safety. New employees can practice basic and advanced skills needed to be safe and efficient. Experienced operators can master their abilities in periodic refresher training. The PushbackSim allows for repeat training scenarios year-round with zero risk to employees, equipment or aircraft.



[AviationPros.com/12375020](http://AviationPros.com/12375020)

## JP125S – 125,000 LB CAPACITY Jetporter

Powered by dual AC motors, the JP125S pairs unmatched turning capabilities with regenerative braking technology to smoothly decelerate in a short distance. Featuring oversteer protection and an aircraft selection system, the JP125 will safely move regional and large cabin business jets.

[AviationPros.com/12379192](http://AviationPros.com/12379192)



The Standard of Measurement  
[www.tcsimeters.com/](http://www.tcsimeters.com/) / +1 260.484.0382

## TCS 3000 ELECTRONIC REGISTER FLOW COMPUTER

Control & Capture Delivery Info  
& Wirelessly Transmit it to Back  
Office Accounting Software

[AviationPros.com/10132746](http://AviationPros.com/10132746)

## MINI TRUCKS

### Woodys MiniTrucks

WoodysMiniTrucks provides support vehicles with a variety of options and configurations.

[AviationPros.com/12377753](http://AviationPros.com/12377753)



## TOW TRACTORS

### Textron GSE - TUG Technologies Corporation

TUG Technologies offers tow tractors with capabilities ranging from 3000–78,000 DBP. Tow tractors are available in diesel, electric, and gasoline.

[AviationPros.com/12235181](http://AviationPros.com/12235181)

THE ONLY SHOW DEDICATED TO  
GROUND SUPPORT EQUIPMENT

# INTERNATIONAL AIRPORT GSE EXPO

OCTOBER 2-4, 2018

RIO ALL-SUITE HOTEL & CASINO

LAS VEGAS, NEVADA, USA

[www.GSEexpo.com](http://www.GSEexpo.com)

## Save the Date for International Airport GSE Expo 2018!

Make plans today for 2018 International Airport GSE Expo, the world's largest event exclusively focused on Ground Support Equipment. Don't miss it!

**We expect:**

- ✓ 2,500+ industry professionals
- ✓ 200 or more exhibiting companies
- ✓ 65,000+ square feet of equipment and demonstration space

*And much, much more!*

## Submit your Exhibit Space Application today!

Be sure to visit [www.GSEexpo.com](http://www.GSEexpo.com) or contact Show Director, Sue Ralston – [sralston@GSEexpo.com](mailto:sralston@GSEexpo.com) – to get started.



Presented by

**Ground Support**  
WORLDWIDE

**IAEMA**  
International Airport Equipment  
Manufacturers' Association

## FOD BOSS

### Myslik Inc.

The FOD BOSS works by capturing debris as it passes over the tarmac. The force of friction and a series of specially designed brushes scoop up foreign objects and hold them in an easy to empty mesh capture zone. With a sweep width of 2.4 meters (8 feet), 4.8 meters (16 feet), or 7.2 meters (24 feet), the FOD BOSS can clean up to 300,000 square meters (3 million square feet) per hour, at speeds from 6 kph (4 mph) to 40 kph (25 mph). Aerosweep Pty. Ltd. has released the latest improvement to the FOD BOSS speed sweeping system: the Phase Three Retention Blade (P3R). The latest technology provides even greater FOD collecting and retaining capability with new built in ribs.



[AviationPros.com/10300255](http://AviationPros.com/10300255)

## AIRCRAFT CHOCKS

### Scientific Developments Inc. (SDI Rubber)

Scientific Developments, Inc. offers a complete line of durable aircraft chocks that can be fully customized, to meet specific needs. The company manufactures high-quality products like this line of chocks from recycled tire rubber.



[AviationPros.com/12376424](http://AviationPros.com/12376424)

## SAFETY BUMPER CUSHIONS

### Mantec Services Inc.

Mantec Services offers tough, industrial-grade, self-skinning polyurethane foam that is designed for high-impact applications. It features high tear strength, abrasion-resistance and are electrically nonconductive. It is moisture, chemical and solvent resistant and deters Skydrol, MEK and fuels. The cushions meet FMVSS 392 and Cal 117 fire retardant standards.

[AviationPros.com/12337302](http://AviationPros.com/12337302)



Hydraulics International, Inc.  
OXYGEN & NITROGEN BOOSTERS

## INCREASE PROFITS Gas Boosters provide up to 40% MORE FILLS

Primary use for filling or topping off...

Onboard Oxygen Bottles • Struts • Escape Chute  
High Altitude Low Opening (HALO) • Life Rafts • Tires

Even if your source gas pressure drops below 300-PSI



### 2G SERIES Electric Driven

- 5000-PSIG rated
- 15 SCFM discharge rate
- Quiet, only 60 dba
- No belts or pulleys
- 2-Stage and double acting configurations



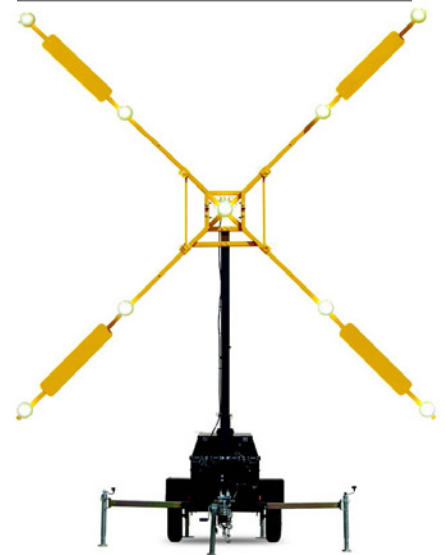
### 5G SERIES Air Driven

- 5000-PSIG rated
- 36 SCFM discharge rate
- Portable
- Single acting, double acting and 2-stage configurations



### HIHPG1 SERIES Air Driven

- Two (2) bottle hand truck
- Fits bottles 9.3" in diameter and 51" in height
- Accommodates single / double acting and 2-stage configurations
- Automatic shutoff safety valves



## X-MARKER L-893 RUNWAY CLOSURE MARKER

### Wanco Inc.

The X-Marker L-893 Runway Closure Marker from Wanco deploys in less than five minutes and provides seven-day continuous run time. Long-life LEDs, 24-hour battery backup and optional integrated fluid bunding are among the many X-Marker features that exceed FAA standards.

[AviationPros.com/12376441](http://AviationPros.com/12376441)

## HYDRAULICS INTERNATIONAL, INC.

9201 Independence Ave., Chatsworth, CA 91311 USA  
(Phone) 818.407.3400 | (Fax) 818.407.3428

[www.hiigroup.com](http://www.hiigroup.com)



Made in the U.S.A.

HYD-3865.3

[AviationPros.com/10017435](http://AviationPros.com/10017435)



## FLCPWS-5 PORTABLE WIRELESS HEADSET SYSTEM: 5-USER

**Flightcom Corporation**

Users can prevent aircraft and GSE damage, enhance safety and improve operational efficiency with Flightcom's wireless full-duplex communication headsets. Hands-free operation lets crews hear instructions, directions and signals without stopping work. The FLCPWS-5 includes five wireless headsets and a ComHub in a Pelican charging case.



[AviationPros.com/12375063](http://AviationPros.com/12375063)

## GATEGUARD XT SERIES WIRELESS INTERCOM

**Ritron, Inc.**

This rugged radio callbox allows long range (up to 1 Mile) two-way voice communication and remote control of gates or doors. It works with business band two-way radios or desk-top base station. It is made in the USA.



[AviationPros.com/12377751](http://AviationPros.com/12377751)



## SAFEDOCK ADVANCED VISUAL DOCKING GUIDANCE SYSTEM

**ADB SAFEGATE**

Safedock A-VDGS and apron management systems maximize safety and efficiency through precise parking of aircraft and integration with other systems for customized control and monitoring of apron activity.

[AviationPros.com/12377736](http://AviationPros.com/12377736)

## H9935 HEADSET

**David Clark Company Inc.**

The H9935 headset is designed for use with David Clark Series 9900 Wireless Systems for ground support operations. The H9935 model features a new, M-2 microphone for clear speech clarity and high-profile ear domes for increased noise reduction. A new, over-molded flex boom assembly provides added durability in rugged ramp environments.

[AviationPros.com/12114204](http://AviationPros.com/12114204)



## LED'S WORK LIGHT VEST

**Lightvest U.S.A.**

The LED's Work Light Vest provides hands-free, portable lighting for up to 5 meters in outdoor and other dark working environments. With seven settings for visibility and torch functions, the illuminating vest eliminates the need for a flashlight. The battery can be fully recharged within two hours, using a 110-240V AC charger or optional travel charger. The lighting solution includes a certified professional safety vest made of high quality and is suitable for professionals working in poor or dark conditions. The vests are available in yellow or orange with options for lighting on the front, back and shoulders of the vest.

[AviationPros.com/12375727](http://AviationPros.com/12375727)



# Rely on Reelcraft

**NEW!**

Ground power unit (GPU) reels  
Customized to meet your requirements

Pre-conditioned air (PCA) reels  
Multiple options and configurations available

## REELCRAFT®

Made in USA

[www.reelcraft.com](http://www.reelcraft.com) 800-444-3134

[AviationPros.com/10017705](http://AviationPros.com/10017705)

## ▶ ELGIN CROSSWIND FSX Elgin Sweeper Company

Elgin Crosswind/Crosswind FSX, which is a regenerative air sweeper with superb pickup at high (FSX) or low speeds, is used for runways, aprons, tarmac, or parking lots. The FSX runs 24 kph (15 mph) for runway sweeping.



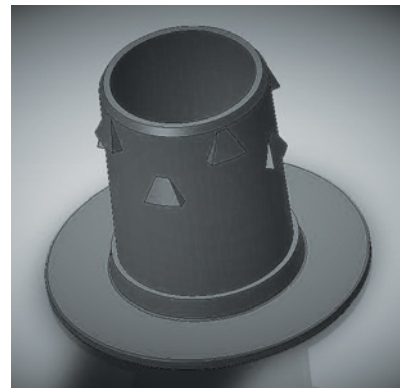
[AviationPros.com/10164228](http://AviationPros.com/10164228)

## ▶ FOAM IMPACT PROTECTION American Permalight Inc.

Permalight foamy cushioned safety bumper guards attach to corners, projections or flat surfaces and prevent injury plus protect sensitive equipment. Black-yellow foam guards are ideal for indoor and outdoor use. The product is available in 15 different shapes either self-adhesive or with stainless-steel mounting support at 39-inch or 16-foot lengths that can be cut to size using a utility knife.



[AviationPros.com/12362675](http://AviationPros.com/12362675)



## ▶ DELINEATOR REPAIR INSERT KC Enterprise

The Delineator Repair Insert fixes broken delineators. Instead of throwing broken delineators away and buying more, or doing without and compromising safety, the Delineator Repair Insert can get them back to work. It is a simple solution for repairing the worn out retention ring.

[AviationPros.com/12313037](http://AviationPros.com/12313037)

## Double your cable life

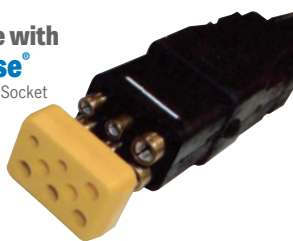
with service proven *EcoNose*® from Anderson Airmotive

Available for both Attachable® and overmolded sockets and cables

By replacing the severe wear area in a ground power socket with a superior tough high density (HD) composite polymer, the life of the cable assembly is significantly increased.

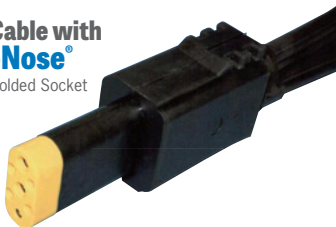
### AC Cable with EcoNose®

Attachable® Socket



### DC Cable with EcoNose®

Overmolded Socket



- Reduces wear on the plug nose and contacts
- Protects plug contacts from deformation
- HD composite polynose can be changed in 60 seconds on the ramp for quick return to service
- More economical than any other wear nose
- Compatible with all aircraft
- The super tough nose plate is recyclable thus minimizing the effect on the environment



### ANDERSON AIRMOTIVE PRODUCTS Co., Inc.

994 Jefferson Street, Fall River, MA 02721  
Tel (508)646-0950 / Fax (508)646-0966

[sales@andersonairmotive.com](mailto:sales@andersonairmotive.com) • [www.andersonairmotive.com](http://www.andersonairmotive.com)

\*Attachable and EcoNose are registered trademarks of Anderson Airmotive Products

[AviationPros.com/10016997](http://AviationPros.com/10016997)

## DON'T WASTE YOUR TIME

WE OFFER SOLUTIONS FOR  
GROUND SUPPORT EQUIPMENT



Advise on purchasing  
Equipment and Parts

RENTAL  
UNITS AVAILABLE



SGS on line store

USA Miami: +1 305 888 0189

Toll Free USA: +1 877 473 2669

COL. Bogotá: +57 (1) 344 1380

COL. Medellín: +57 (4) 609 5833

Rep. Dominicana: +1 829 236 2518

Buy parts on-line: [WWW.gsexp.com](http://WWW.gsexp.com)

Worldwide Shipping Available

## PARTS

For the following manufacturers:

\*HOBART\* TRILECTRON\* J&B AVIATION\* \*AIR-A-PLANE\* HARLAN \*CLARK\*  
\*JBT AEROTECH\* FMC\* AP MANUFACTURING \*TUG\* DAVCO\* S&S\* CLYDE\* \*WASP\*  
\*ISCAR GSE\* TESCO\* TRONAIR\* ARVICO\* LIFT-A-LOFT\* TLD\* LANTIS\* ACE\* NORDCO\*

[AviationPros.com/10017767](http://AviationPros.com/10017767)

## BATTERY OPERATED BARRIER

### Battery Operated Barrier

For temporary or long term use, battery operated barriers are self contained and can be deployed in seconds. All units run off deep cycle batteries, and have options like solar panel, keypad, remote and RC. Battery Operated Barriers work in all weather conditions.



[AviationPros.com/12377442](http://AviationPros.com/12377442)

## PROTECTIVE AIRCRAFT COVERS AND GSE

### Kinnear Rembourrage Inc.

Kinnear manufactures protective aerospace products such as engine covers, warning streamers, cargo netting and GSE plugs/covers (Pitot, TAT, landing gear, windshield). The products provide safe and cost effective solutions to avoid unforeseen damages to aircraft while parked and help prevent injuries to personnel.



[AviationPros.com/12377706](http://AviationPros.com/12377706)



## HI VIZ SAFETY AND UNIFORM SOLUTIONS

### Transportation Safety Apparel

As a hi-visibility uniform safety company, Transportation Safety Apparel serves both large airlines and ground handling companies with a line of Hi Viz Safety and Uniform Solutions.

[AviationPros.com/12377033](http://AviationPros.com/12377033)

# LEKTRO

Since 1945

The Original Aircraft Tug



Models Ranging  
15,000 to 280,000 lbs.

- Electric
- Towbarless
- Certified
- Universal
- Easy to Use
- Simple to Maintain
- Rugged

[www.LEKTRO.com](http://www.LEKTRO.com)

1-800-535-8767 1-503-861-2288  
sales@lektro.com

[AviationPros.com/10017532](http://AviationPros.com/10017532)

[www.juniper-liverpool.com](http://www.juniper-liverpool.com)



Adaptable and manoeuvrable, Juniper Lightweight washing rigs are a favourite with our customers around the world.

Part no: JMP/CFM56/D/1535

Heated tanks are now available as an option for even greater versatility.



Tel: +44(0)151 733 1553  
gse@juniper-liverpool.com

[AviationPros.com/10017987](http://AviationPros.com/10017987)

## ▶ NOISE PROTECTION

### CeoTronics AG

The CT-NoiseProtection helmet is from CeoTronics and can protect users from extreme noise conditions of up to 140 db (A). The in-built communications system, enables voice to be picked up despite major structure-borne sound artefacts. The special helmet has a sound insulation value of SNR 42 db and is certified as personal protective equipment (PPE).



[AviationPros.com/12335300](http://AviationPros.com/12335300)

## ▶ BREAKAWAY DEVICES

### Designovations Inc.

The SNAP'n SAFE breakaway devices are approved by the FAA as a frangible connection as stated in the Advisory Circular 150/5220-23. The frangibility connection performance has been tested and approved by the FHWA. The breakaway devices provide a valuable and economical solution for posts or poles needing frangible support structures. Ground mount SNAP'n SAFE units work especially well in perimeter fencing applications. Surface Mount SNAP'n SAFE units provide a frangible connection when mounting directly to concrete.



[AviationPros.com/12237635](http://AviationPros.com/12237635)



## ▶ SAFETY BARRICADES

### OTW Safety

OTW Safety barricades are trusted by major airports worldwide to delineate construction zones and other airfield hazards. The low-profile barricade, the AR10x96, offers superior staying power and exceeds FAA compliance standards. Composed of blow-molded high density polyethylene (HDPE), it weighs 19 pounds empty but once ballasted with water can weigh up to 260 pounds. Integrated pins allow interconnection without additional hardware and each barricade features specially designed fill-holes to accommodate two lights and two flags.

[AviationPros.com/12237153](http://AviationPros.com/12237153)

CVI INTERNATIONAL

Aviation Support Equipment





Custom & Off-The-Shelf Maintenance Stand Solutions

Nitrogen Generators & Servicing Products

Cvi

Global Challenges. Innovative Solutions.

20680 Carmen Loop Suite #101 | Bend, OR 97702  
Tel: (541) 205-0195 email: info@cviintl.com | cvintl.com

[AviationPros.com/10296676](http://AviationPros.com/10296676)

## ▶ THE FOD-RAZOR AIRPORT RUNWAY SWEEPER

### The FOD Control Corporation

The FOD-Razor Airport Runway Sweeper is an affordable, high-quality "friction mat" sweeping system. Suitable for cleaning Foreign Object Debris (FOD) from runways, taxiways, ramps aprons, helipads, parking areas and other surfaces in or near your flight area. Available in one-, two- or three-mat versions.

[AviationPros.com/12193117](http://AviationPros.com/12193117)



## ▶ CRISIS COMMUNICATION SOLUTIONS

### AtHoc

AtHoc provides a comprehensive crisis communication and mass notification solution that unifies all channels and devices, empowering organizations, people and communities to communicate and collaborate during critical events. AtHoc is certified by Department of Homeland Security for its level of security. It has flexible deployment options that safeguard important personal information and enables enterprise-level command and control across your widely dispersed enterprise.



[AviationPros.com/12237656](http://AviationPros.com/12237656)

# SAFETY AND COMMUNICATIONS

## ▶ DELTA DSC501 HIGH SECURITY BARRICADE

### Delta Scientific

Crash-tested to K54, this advanced counter-terrorism wedge barrier system is designed for sub-surface conditions that



negate extensive excavations. The DSC501 not only stops and destroys a 65,000-pound (5.4 million foot-pounds) dump truck but it continues to stand, preventing a potential second attack.

[AviationPros.com/12377749](http://AviationPros.com/12377749)



## AEROSERVICIOS

GROUND SUPPORT EQUIPMENT

- Provides Ground Support Equipment Solutions
- Large Inventory of new & used GSE equipment available
- Sales, short and long term rentals
- Overhauls & reconditions all units
- 100+ Well trained experienced mechanics & technicians
- Warranty in all products
- Domestic and international shipping

3750 NW 49 ST, Miami FL 33142

Phone: +1(305) 637.3040 [info@aeroservicios.com](mailto:info@aeroservicios.com)

[AviationPros.com/10016926](http://AviationPros.com/10016926)

# FOR SALE

## TWO USED GLOBAL DEICERS

- \$35,000 Each, Sold Separately
- 1999 Internationals Model 4700



FOR MORE INFORMATION CONTACT ALBANY AIRPORT AUTHORITY AT

**(518)242-2213** or

Email [bmatthews@albanyairport.com](mailto:bmatthews@albanyairport.com)

[AviationPros.com/12368583](http://AviationPros.com/12368583)

# Mercury GSE

## Ground Support Equipment

[www.mercurygse.com](http://www.mercurygse.com)

for current stock of air starts, bag tugs, beltloaders, bobtails, crew and passenger stairs, gpu's, loaders — main and lower deck, tow tractors and other items.

**SALES LEASE RENTAL APPRAISAL**

## WE BUY SURPLUS GSE

PH: (562) 653-0654 FAX: (562) 653-0665

E-MAIL: [dtaylor@mercurygse.com](mailto:dtaylor@mercurygse.com)

12519 Cerise Ave., Hawthorne, CA 90250

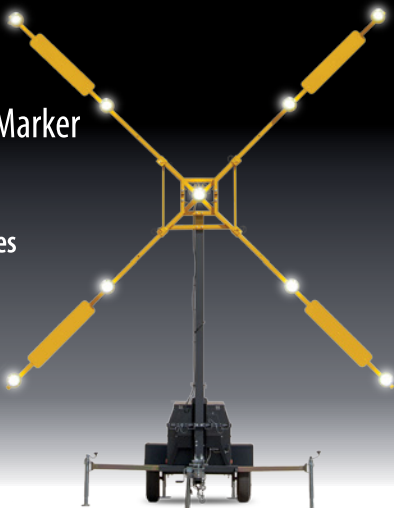
[AviationPros.com/10017592](http://AviationPros.com/10017592)

# X-Marker™

## L-893 Runway Closure Marker

- Exceeds FAA standards
- Deploys in under 5 minutes
- 7-day run time
- 24-hour battery backup
- Long-life LEDs
- Integrated fluid bunding

Bunding system is optional. Not included on standard product.



**WANCO®** 800-972-0755 | [wanco.com](http://wanco.com)

[AviationPros.com/12342963](http://AviationPros.com/12342963)

# YOUR FREIGHT & SHIPPING EXPERTS



Experience You Can Depend On!



**714-377-5933**

[www.AirOceanPros.com](http://www.AirOceanPros.com) • [Sales@AirOceanPros.com](mailto:Sales@AirOceanPros.com)

[AviationPros.com/10018518](http://AviationPros.com/10018518)

# FLIGHTMASTER® GSE

Made In The U.S.A.

FluidTran has been custom designing GSE for over a decade delivering superior quality and performance at lower prices. Our FLIGHTMASTER® product line includes hand pumps, cart dispensers and closed-containment fluid transfer systems that are compatible with all aircraft. *Tell us what you need and we will build it!*



2 & 5 GALLON MANUAL BOWSERS



LANDING GEAR SERVICE UNIT



COWL-THRUST REVERSE SERVICE CART



FluidTran Inc.™

Contact us for more information and special offers:

954-803-7519

info@fluidtran.com

Visit us at: www.fluidtran.com

AviationPros.com/10017288

# DAVIN Inc.

SALES, LEASING, FINANCING

CONTACT: David Zschunke - DavinGSE@att.net  
95 Crooked Hill Road, Commack, NY 11725

## EQUIPMENT AVAILABLE

(Contact us if you need equipment not listed here!)

Aircraft Pushback Tractors

Passenger Stairs

Baggage Carts

Pallet Container Dollies

Aircraft Air Conditioners

Aircraft Deicers

Tow Bars

Catering Trucks

Portable Water Trucks

Belt Loaders

Ground Power Units

Lavatory Trucks/Carts

Airstarts

Aircraft Heaters

Tugs & Bobtails

Visit: [www.DavinGSE.com](http://www.DavinGSE.com)

for complete list & pictures of available equipment.

AviationPros.com/10017167

# ALBERTH AVIATION

TOOLS & EQUIPMENT DESIGNED BY MECHANICS FOR MECHANICS

## Spanner Socket Kit



Available for Gulfstream and Global Express

- Low profile allows for single-person use
- Easy alignment w/attached flashlight in site holes
- Includes socket, flashlight, & no-flex breaker bar head

## Oxygen Fill Adapter



- 3 in 1 tool: Fill port connector, wrench, screwdriver
- Spring-loaded retractable socket driver
- Secure removal of service port nut without stripping
- Assures tight seal before servicing oxygen

Tire Cage • Bottled Water Cart • Lav Cart • Wheel & Brake Dolly • Tooling

20 years

www.AlberthAviation.com • 832.934.0055

AviationPros.com/10016971

# SAFETY BUMPER CUSHIONS



EASY TO INSTALL!

## DAMAGE PROTECTION

- Extra in Mold Coating on Tough, Industrial Grade, Self Skinning Polyurethane Foam
- Designed for High Impact Applications
- High Tear Strength, Abrasion Resistant & UV Resistant
- Moisture, Chemical & Solvent Resistant: Deters Skydrol, MEK & Fuels
- Meets FMVSS 302 & Cal 117 Fire Retardant Standards
- Custom Designs, Colors & Framing Available



Call Today: 206-285-5656  
www.manteoservicesinc.com

Made in the USA • ISO9001:2008 Certified • Women Owned • Small Business

AviationPros.com/12039110



SALES RENTALS LEASING FINANCE CONSULTING

### AIRCRAFT TOW TRACTORS

TLD TMX-150-16 (35,000 lbs. GVW)  
JBT B400 (30,000 lbs. GVW)  
Eagle TT-12, 12,000 lbs. DBP

### BAGGAGE TRACTORS

TLD JST-25, gas  
Harlan HTA50, diesel  
Tiger TC-30, gas

### GPU

TLD 90Kva/28V dual output  
TLD 90 Kva + 120 Kva  
Trilectron 90 Kva

### HEATERS

Generac MAC400FHC  
Coldbuster Mark 4  
Air-A-Plane 5050D

### DEICERS

Premier MT43P21-ABS, closed bucket, forced air

### PASSENGER STAIRS

Phoenix Metal Products PAS 200  
Clyde towable, 88"-161"

### LAVATORY TRUCK

Wollard TLS 770

### WATER TRUCK

Phoenix Metal Products WT 450

### CONVEYORS

NMC-Wollard TC-888, gas

### AIR CONDITIONERS

TLD 802 115-ton w/heat  
TLD 804 65-ton  
TLD 302 30-ton w/heat

FOR SALE OR LEASE

AviationPros.com/10017302

# GSE SOLUTIONS

20+ YEARS GSE EXPERIENCE

- Transmission Shift Inhibitors and Interlocks
- Multi-Zone Top Speed Limiters
- Collision Avoidance
- Idle Control
- Engine Shutdowns
- Access Control
- Impact Sensing



SAFETY SYSTEMS & CONTROLS

www.loadingzonesafety.com

713-465-8839

AviationPros.com/10017728

Registration Opens Jan. 1, 2018

INTERNATIONAL  
AIRPORT  
**GSE**  
EXPO

BROUGHT TO YOU BY

**Ground  
Support**  
WORLDWIDE

**IAEMA**  
International Airport Equipment  
Manufacturers' Association

“All our suppliers  
were there and I  
had the chance  
to see their new  
technologies.  
Excellent venue  
for networking.”

– Andreas Castro  
(attendee), SIACA

# Attend the ONLY GSE Industry Event in 2018

Join us October 2-4, 2018,  
Rio All-suite Hotel & Casino,  
Las Vegas, Nevada, USA

Mark your calendars for October 2-4,  
2018 to attend the ONLY event for the  
GSE industry professional in 2018,  
the International Airport GSE (IAGSE)  
Expo.

### Why should you attend the 2018 Expo?

**Products. Products. Products!**

With more than 65,000 net sq. ft of  
exhibit space, every major equipment  
manufacturer and solutions provider  
will be on site.

**Live Demo area.** Our massive outdoor  
exhibit area offers up-close and  
personal opportunities to see live  
equipment demonstrations

**Networking:** Friendly show hours and  
event layout enhances networking  
opportunities with GSE industry  
thought leaders and peers

Be sure to visit [www.GSEexpo.com](http://www.GSEexpo.com) or  
contact Show Director, Sue Ralston  
– [sralston@GSEexpo.com](mailto:sralston@GSEexpo.com) – to get  
started.



For registration and more Expo information, please visit [www.GSEexpo.com](http://www.GSEexpo.com).

# ENGINE DISTRIBUTORS INC.



*YOUR Tier IV Solution*

Reliable • Durable • Clean • Green

*Engines That Are The Solution To Your Tier 4 Diesels.*



5-YEAR,  
5000 HOUR  
WARRANTY  
FOR THE  
GSE MARKET



## Ford Advanced Technology Engines.

Our line of LSI industrialized Ford engines are available and serviced through a Global Dealer Network.

Featuring a complete line of EPA and CARB Certified 1.6, 2.5, 3.7 and 6.8 L LSI Engines ranging from 20 to 200 hp. Available in Gasoline, LPG, CNG, Natural Gas and Dual Fuel. Secured Volumes, Longer Life Cycles, Dry Fuel and Flex Fuel Valve Trains – You Can Find It At EDI. Performance you can count on!

**Engine Distributors Inc.** 400 University Court • Blackwood, NJ 08012  
Phone: (856) 228-7298 or (800) 220-2700 • [www.edi-dist.com](http://www.edi-dist.com)